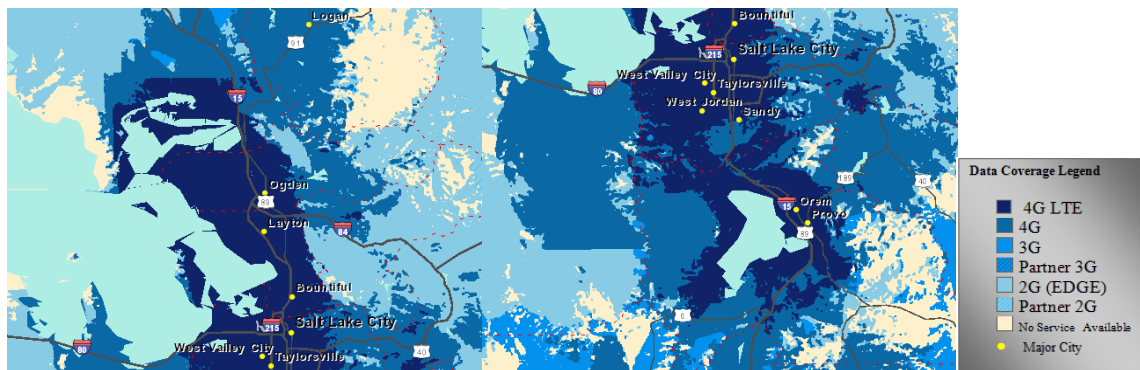
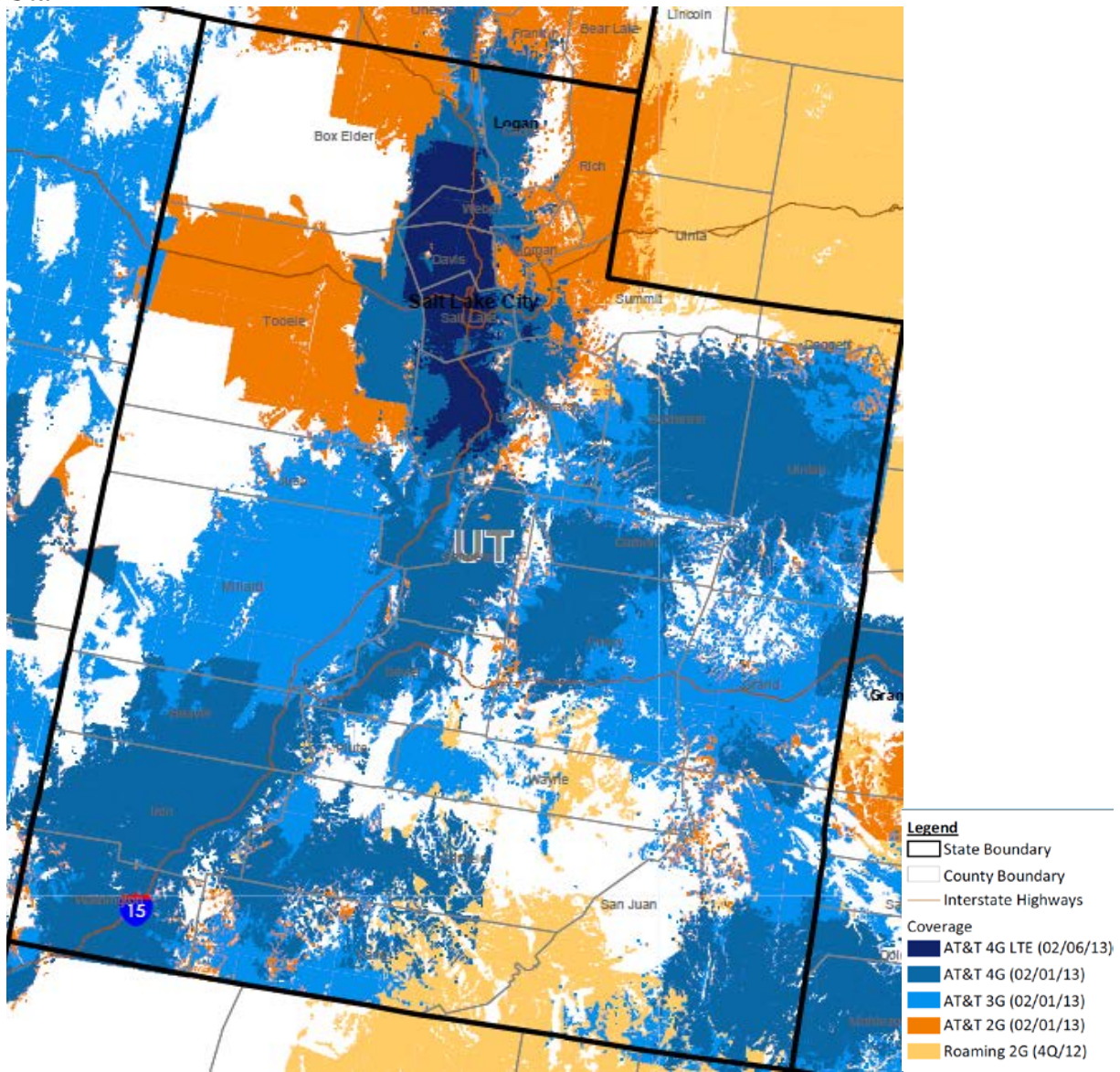
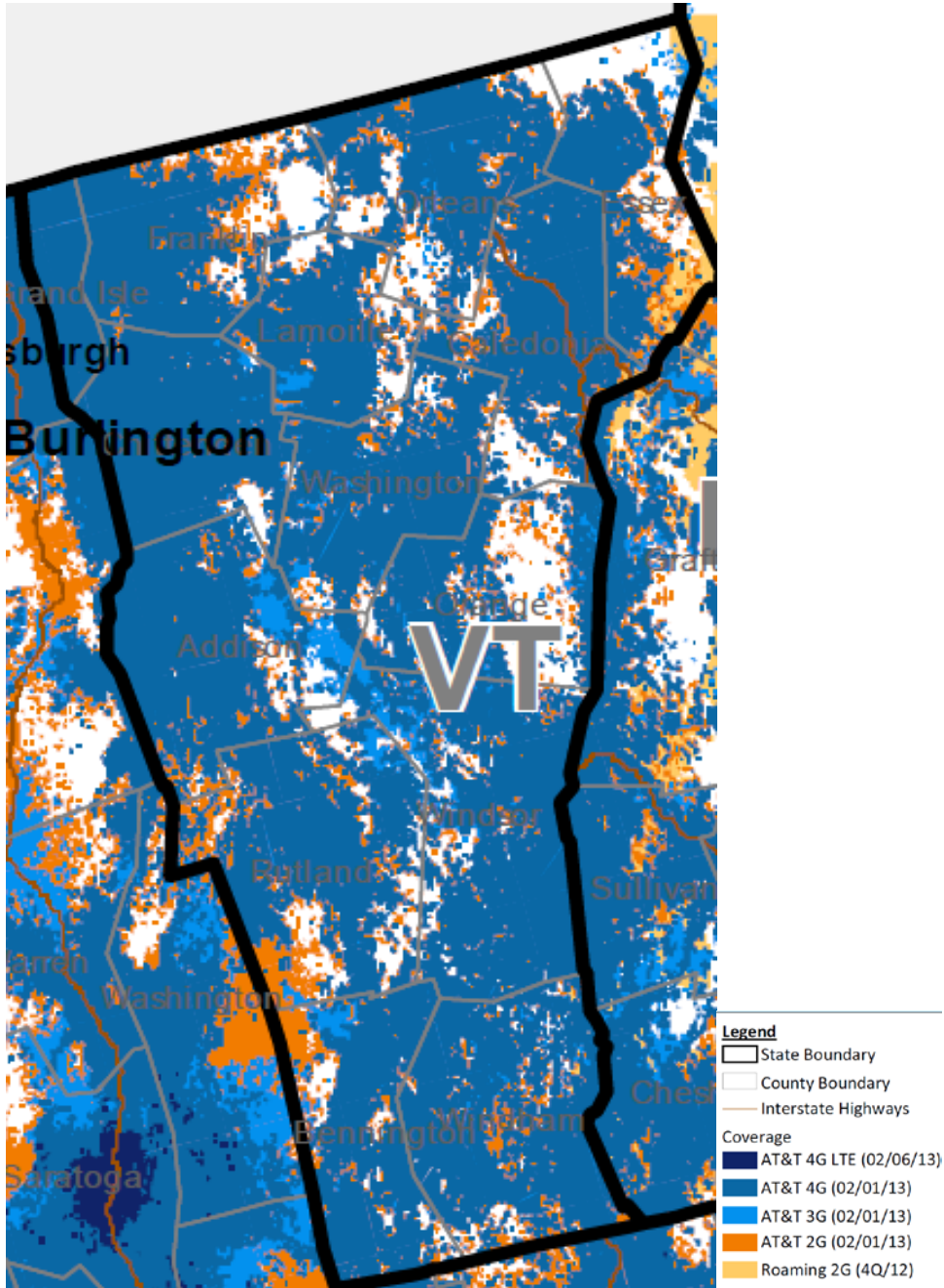


Utah

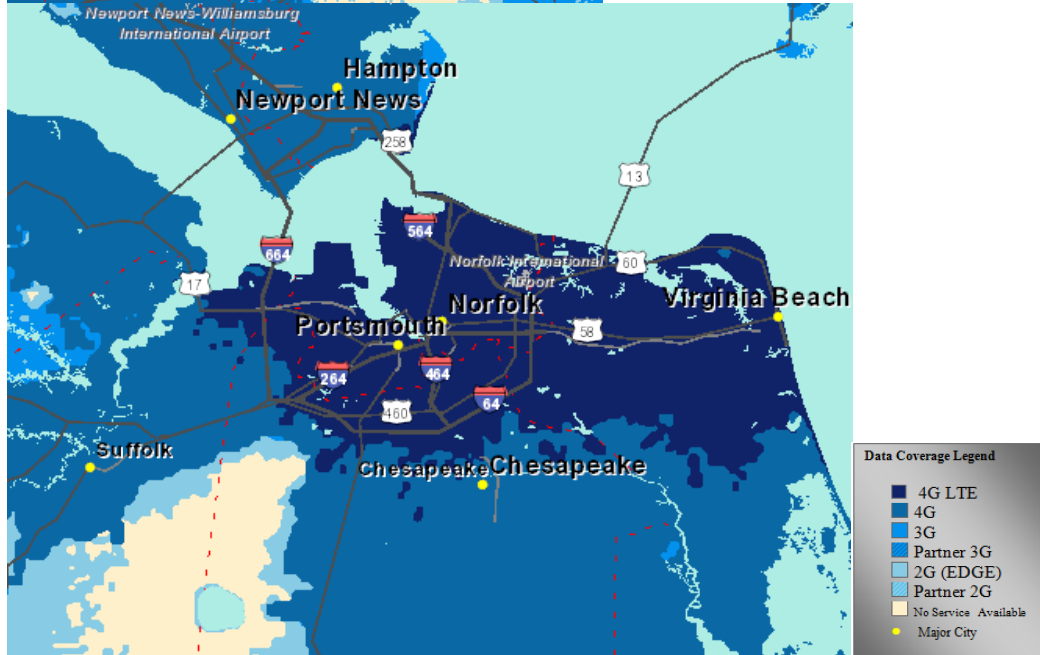
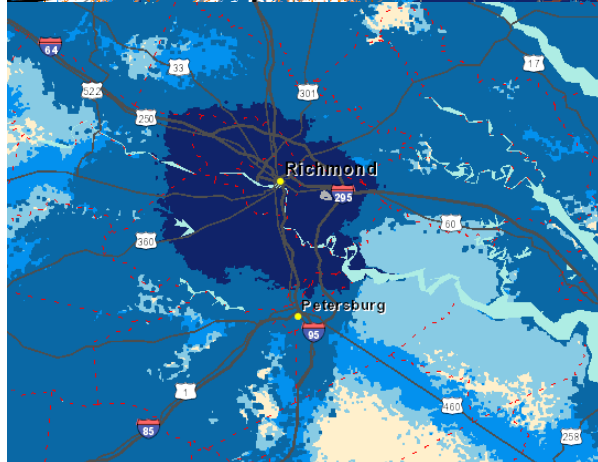
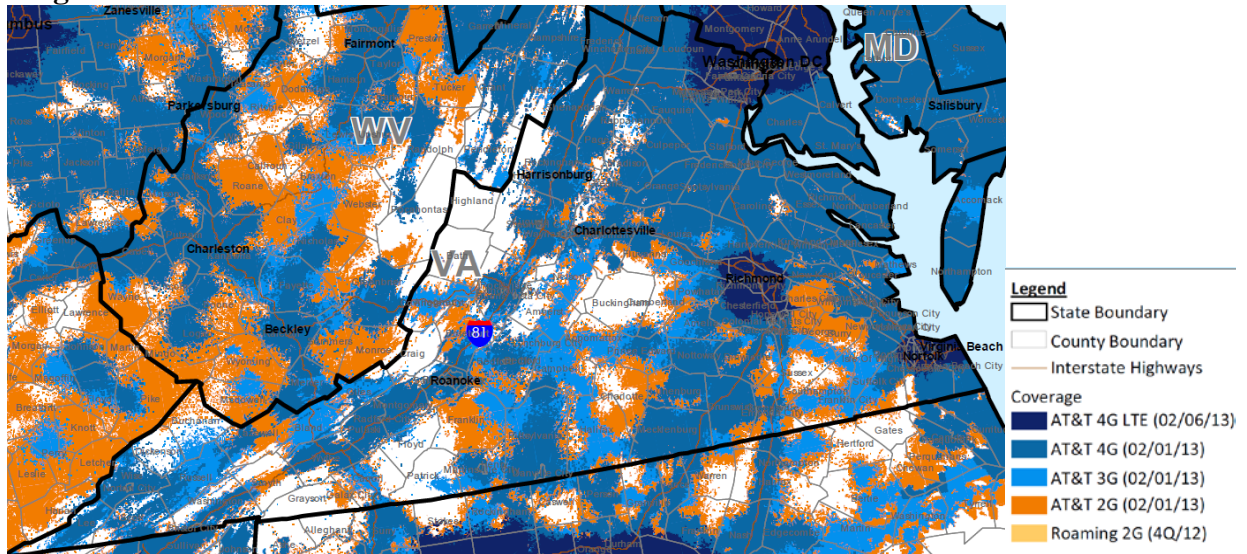


Use or disclosure of the data on this page or screen is subject to the restrictions on the title page or opening view screen of this proposal document or file.

Vermont

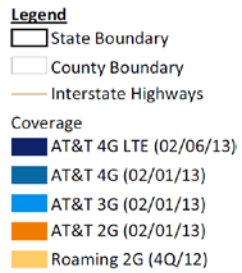
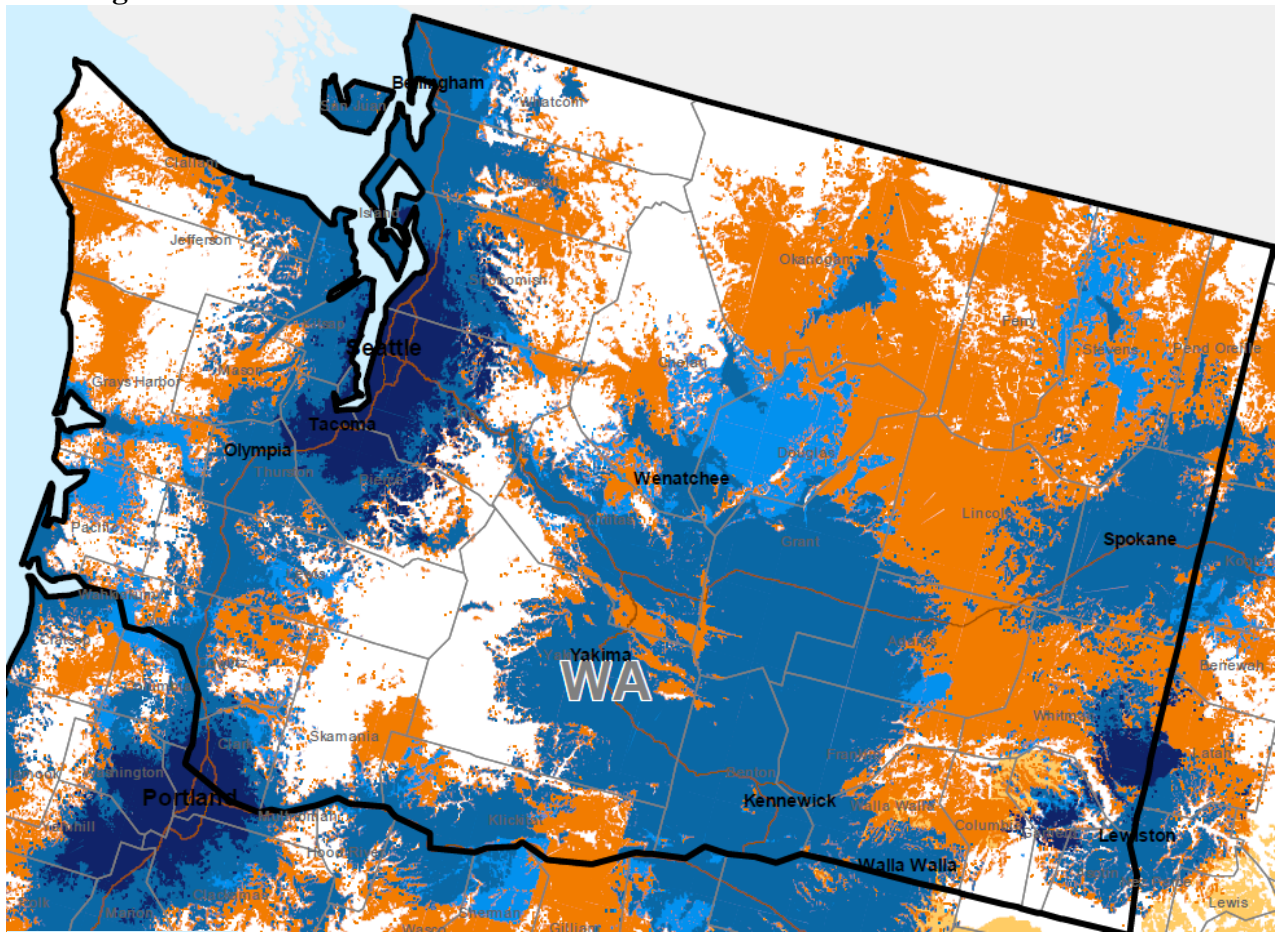


Virginia



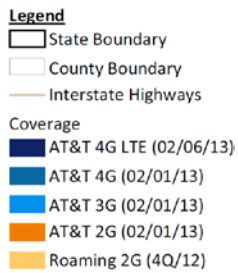
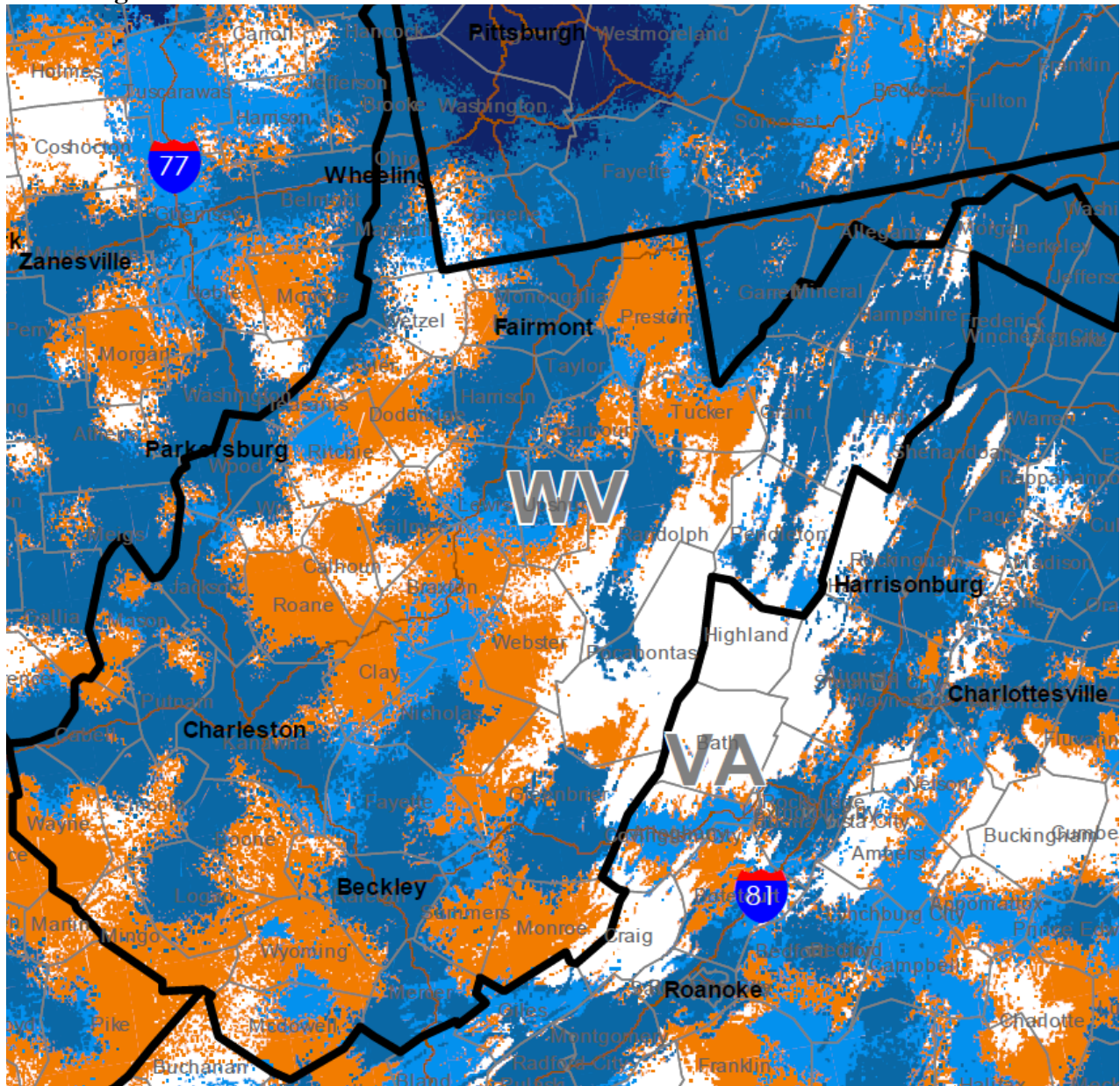
Use or disclosure of the data on this page or screen is subject to the restrictions on the title page or opening view screen of this proposal document or file.

Washington



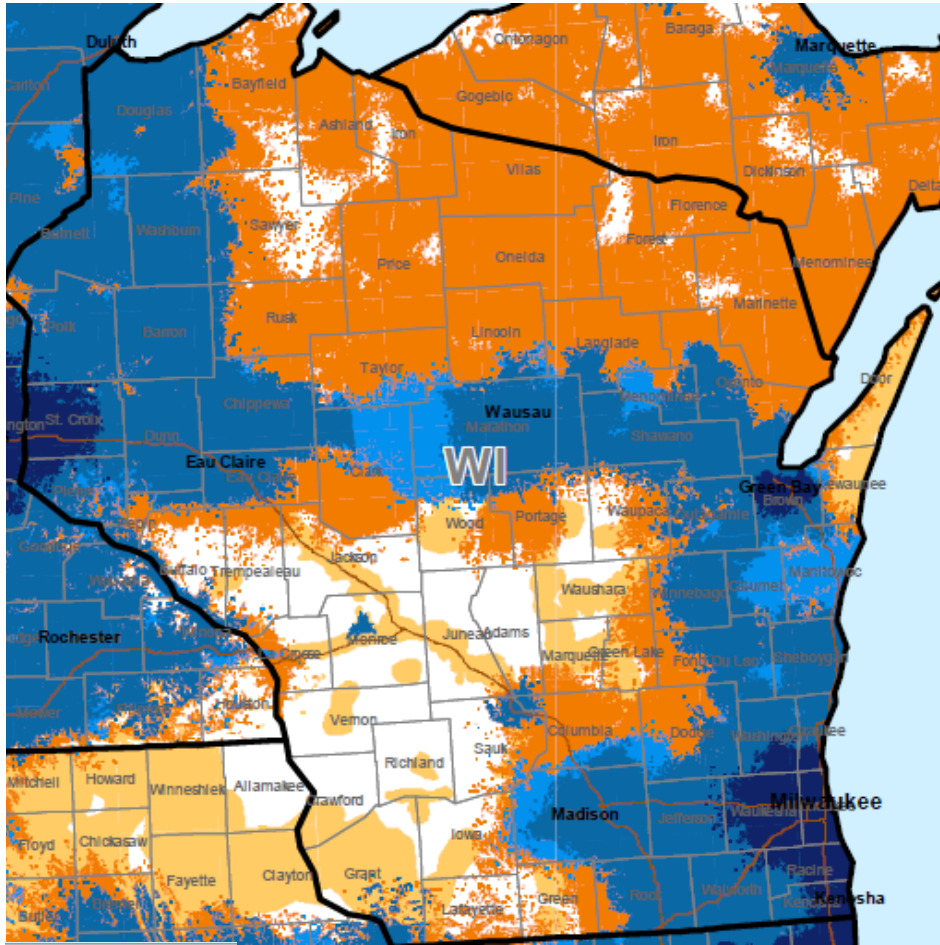


West Virginia



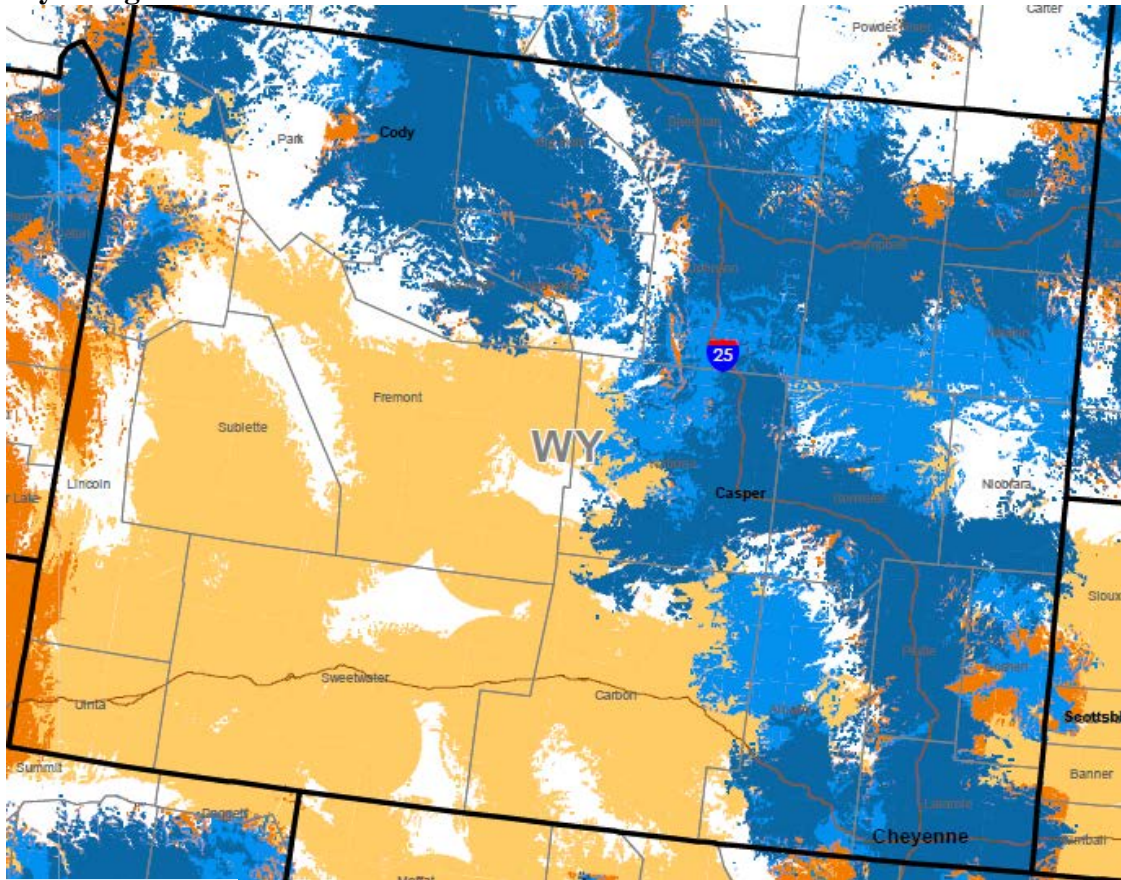
Use or disclosure of the data on this page or screen is subject to the restrictions on the title page or opening view screen of this proposal document or file.

Wisconsin



- Legend**
- State Boundary
 - County Boundary
 - Interstate Highways
- Coverage**
- AT&T 4G LTE (02/06/13)
 - AT&T 4G (02/01/13)
 - AT&T 3G (02/01/13)
 - AT&T 2G (02/01/13)
 - Roaming 2G (4Q/12)

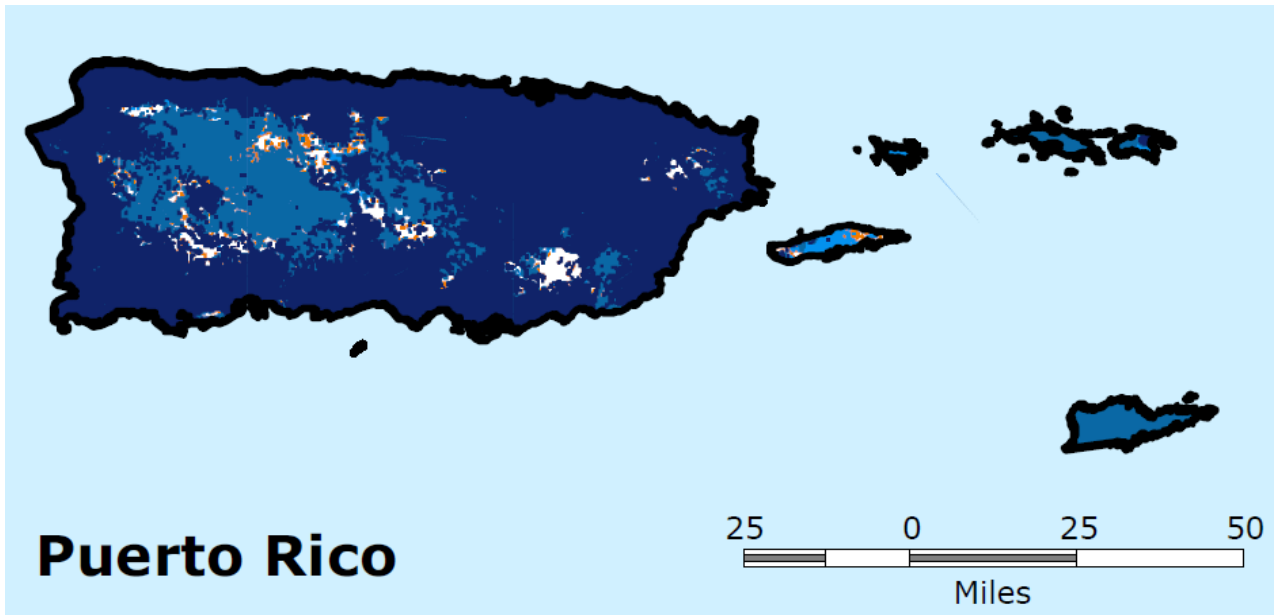
Wyoming











Legend

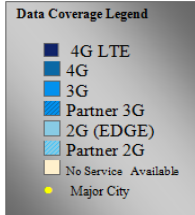
- State Boundary
- County Boundary
- Interstate Highways
- Coverage**
- AT&T 4G LTE (02/06/13)
- AT&T 4G (02/01/13)
- AT&T 3G (02/01/13)
- AT&T 2G (02/01/13)
- Roaming 2G (4Q/12)

Puerto Rico



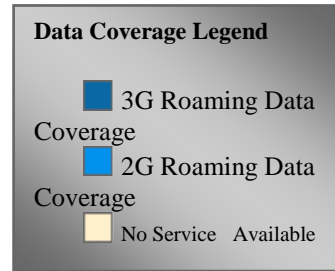
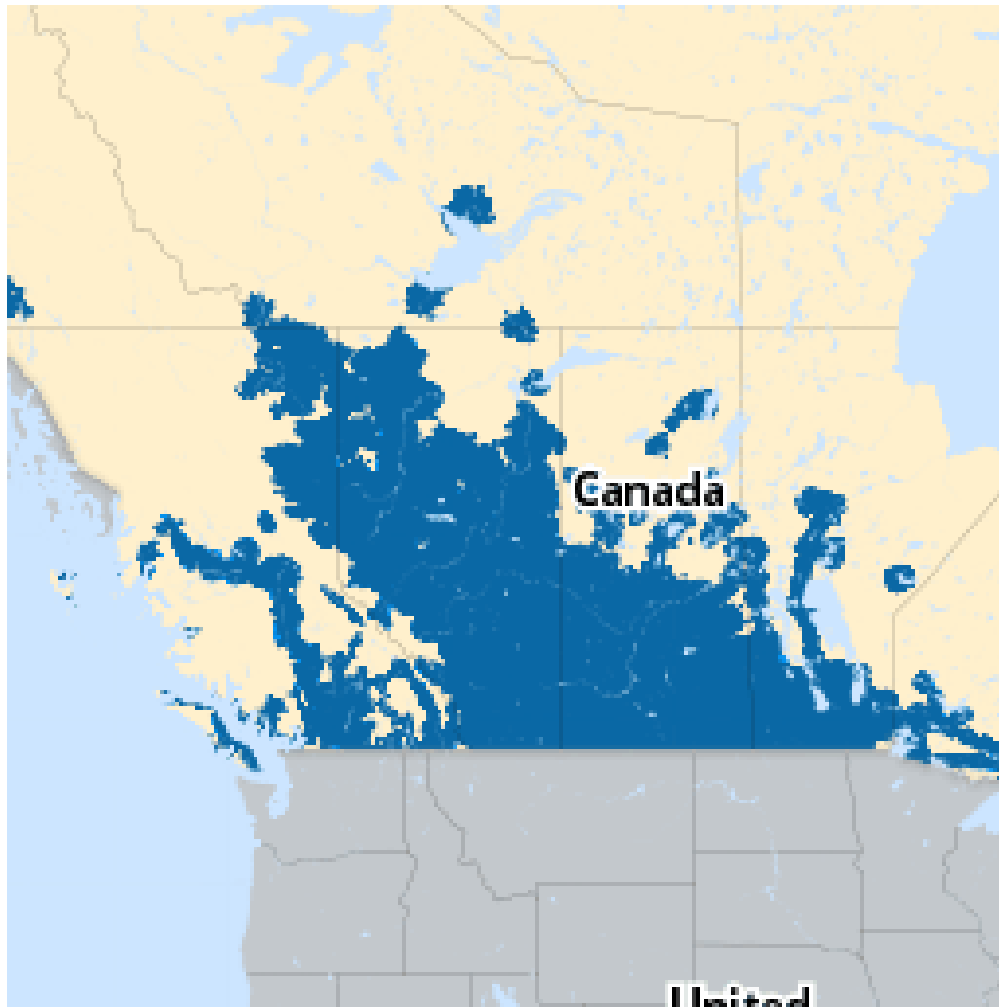
- Legend**
-  State Boundary
 -  County Boundary
 -  Interstate Highways
- Coverage
-  AT&T 4G LTE (02/06/13)
 -  AT&T 4G (02/01/13)
 -  AT&T 3G (02/01/13)
 -  AT&T 2G (02/01/13)
 -  Roaming 2G (4Q/12)

US Virgin Islands

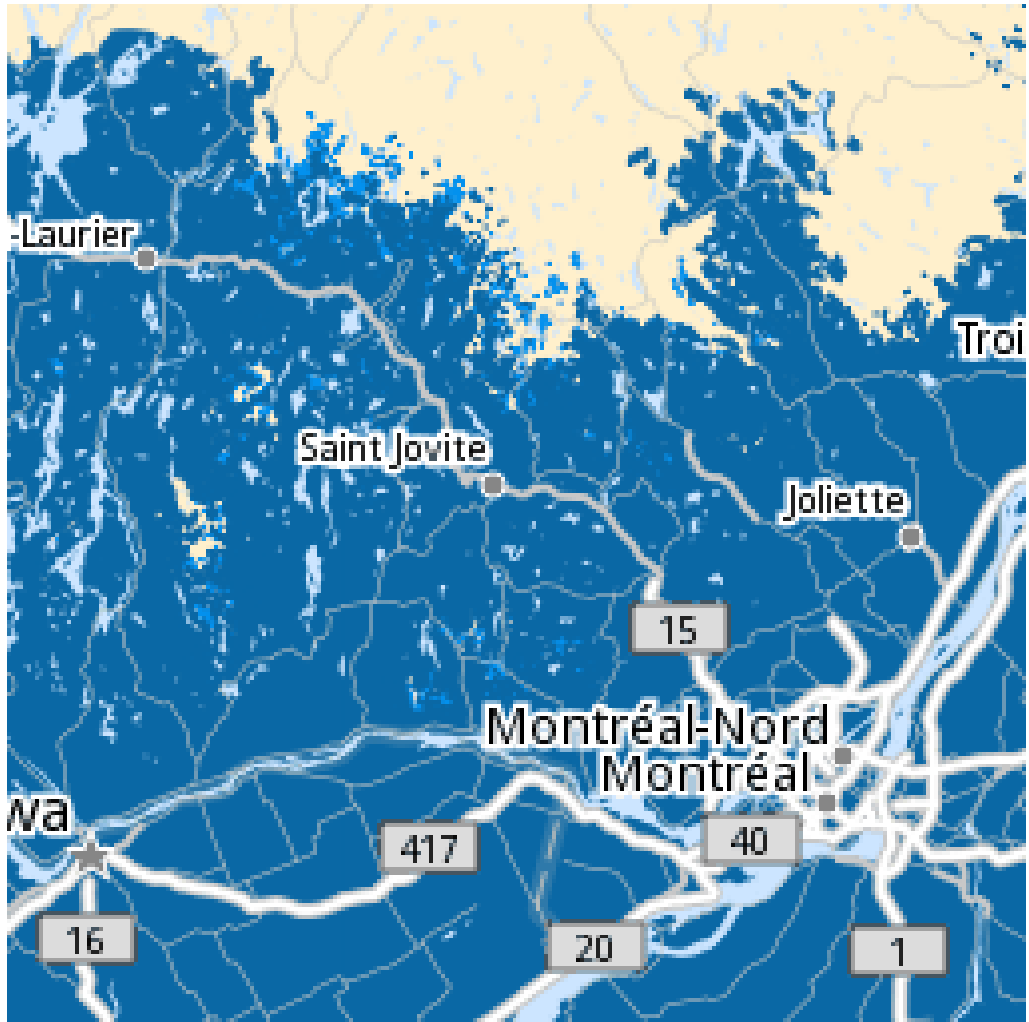


International Coverage for the Nine Mandatory Countries
(coverage for other served International Countries may be found at <http://maps.mobileworldlive.com/> and <http://www.wireless.att.com/learn/international/index.jsp>)

Canada



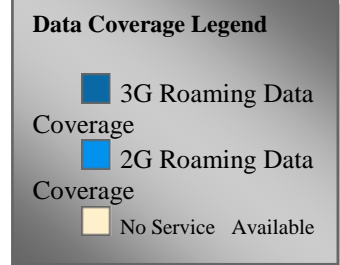
Canada



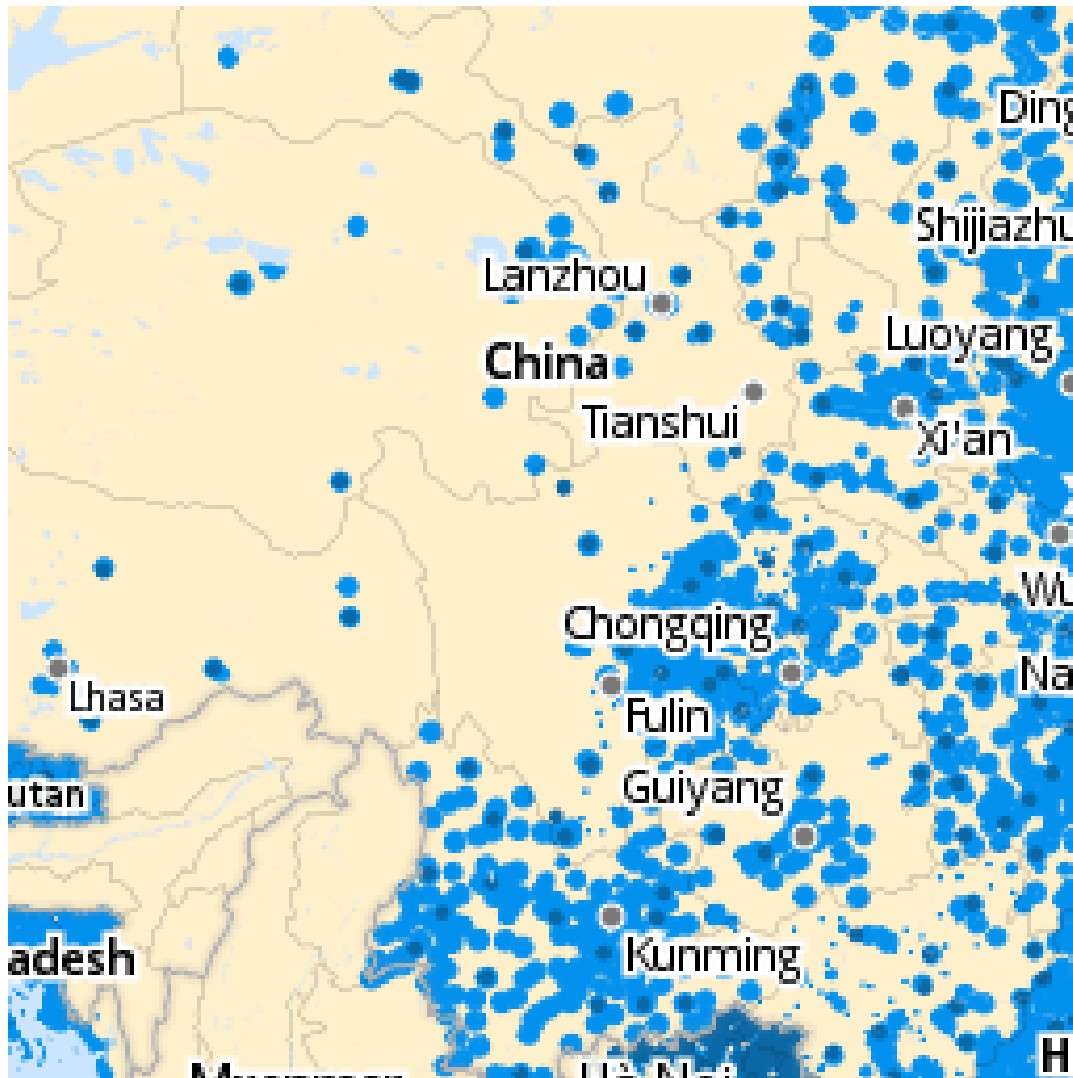
Data Coverage Legend

- 3G Roaming Data Coverage
- 2G Roaming Data Coverage
- No Service Available

Canada



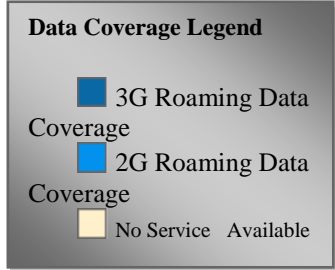
China



Data Coverage Legend

- 3G Roaming Data Coverage
- 2G Roaming Data Coverage
- No Service Available

China



France



Data Coverage Legend

- 3G Roaming Data Coverage
- 2G Roaming Data Coverage
- No Service Available

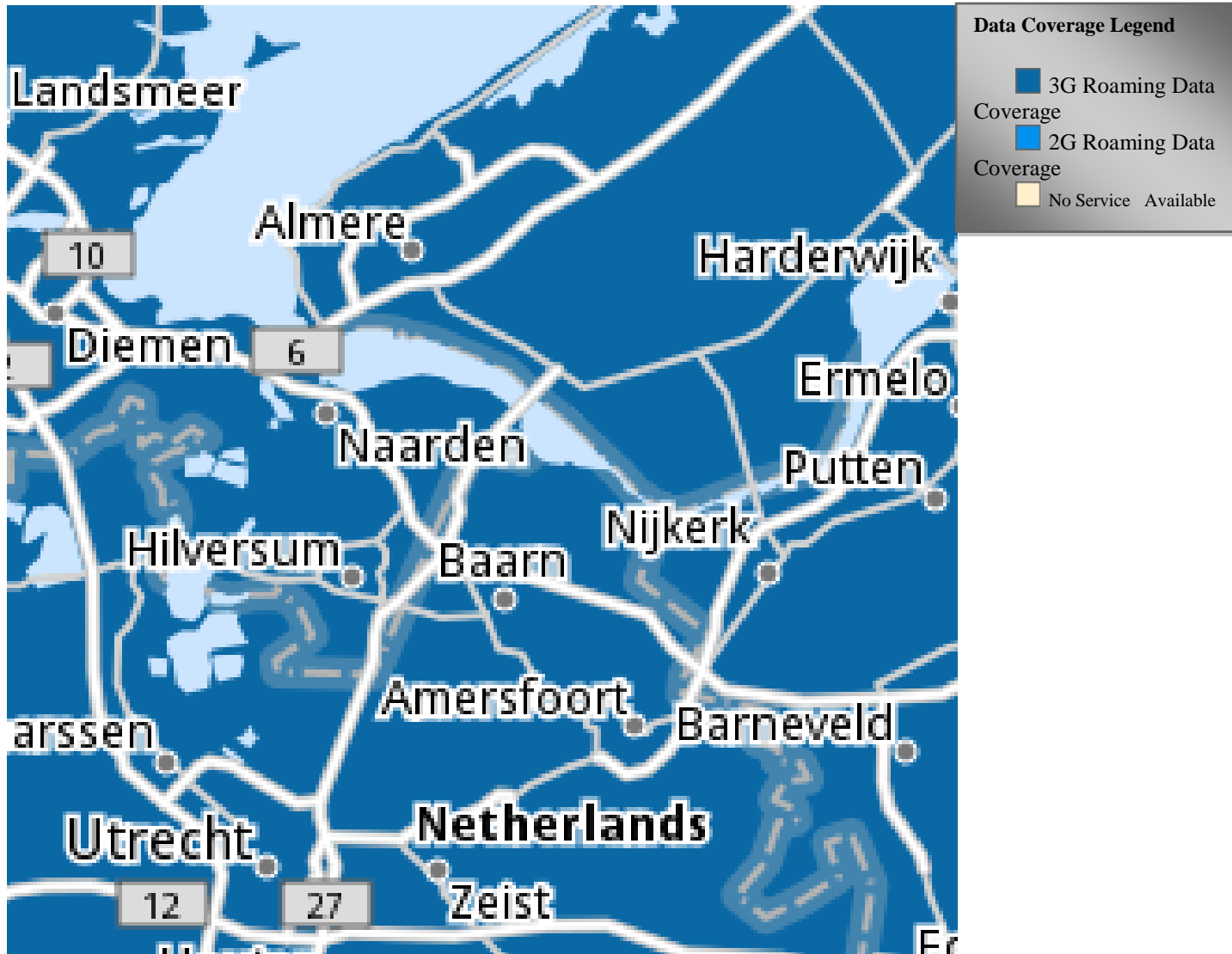
Germany



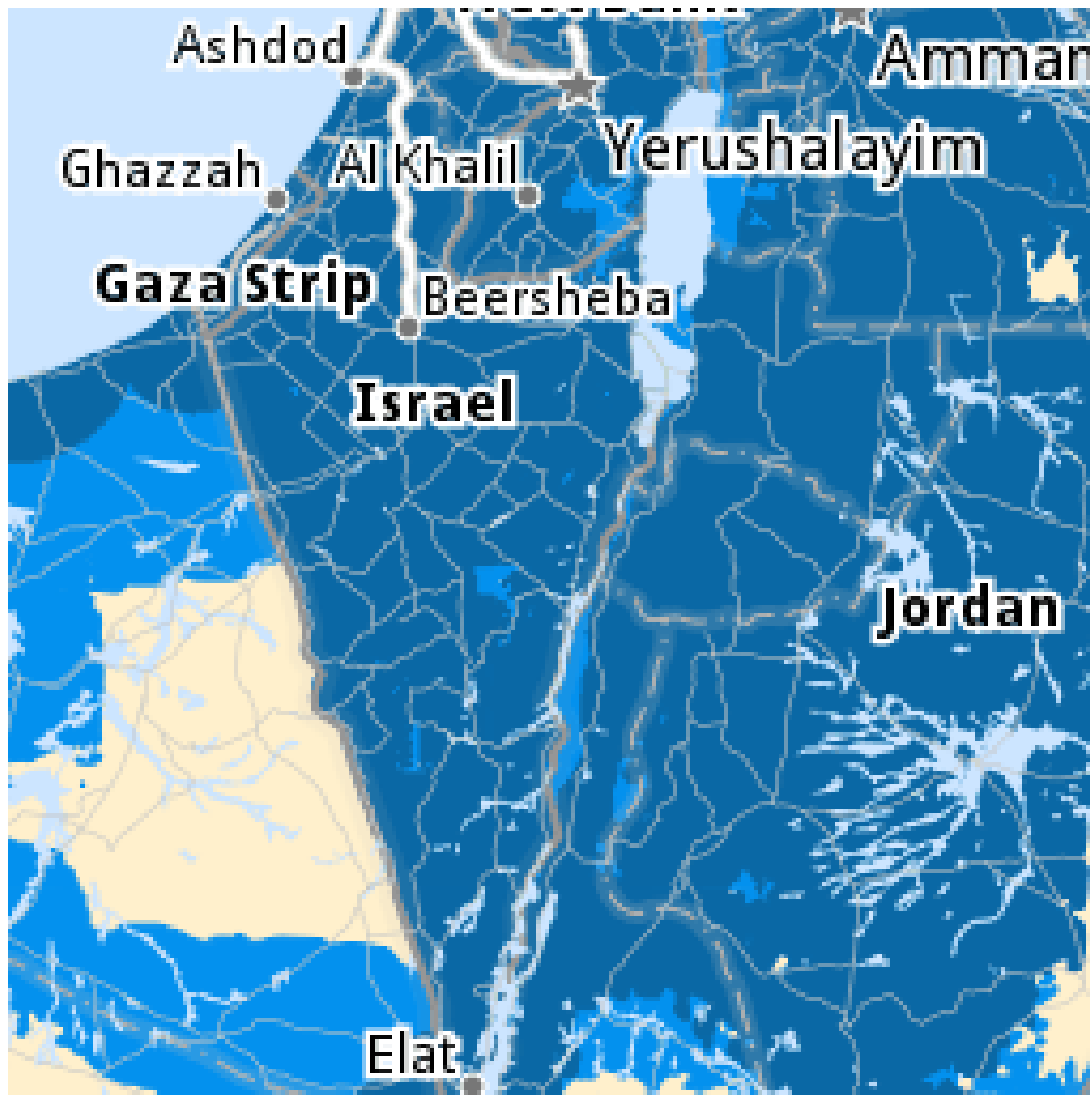
Data Coverage Legend

- 3G Roaming Data Coverage
- 2G Roaming Data Coverage
- No Service Available

Holland/Netherlands



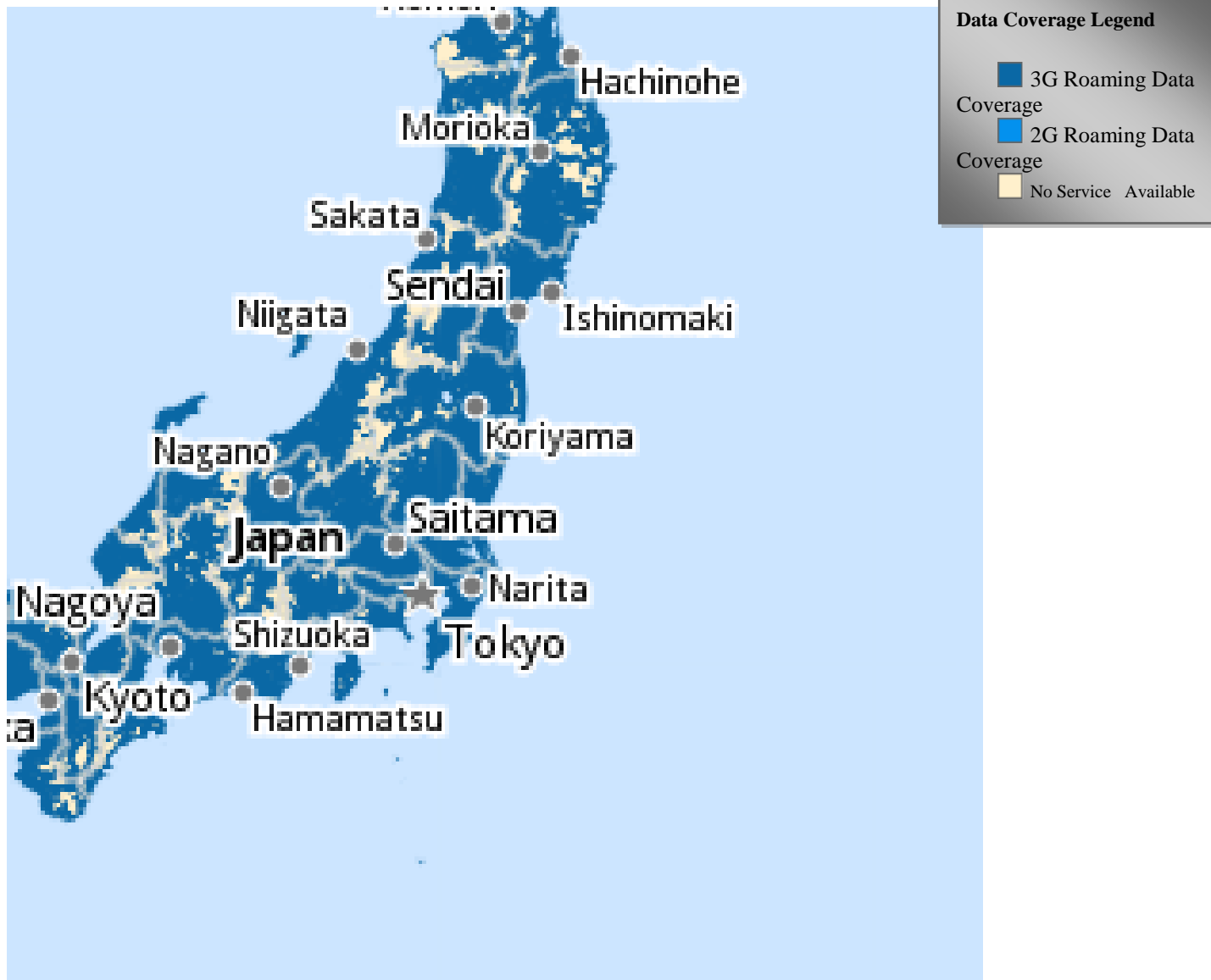
Israel



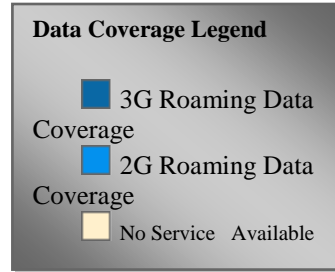
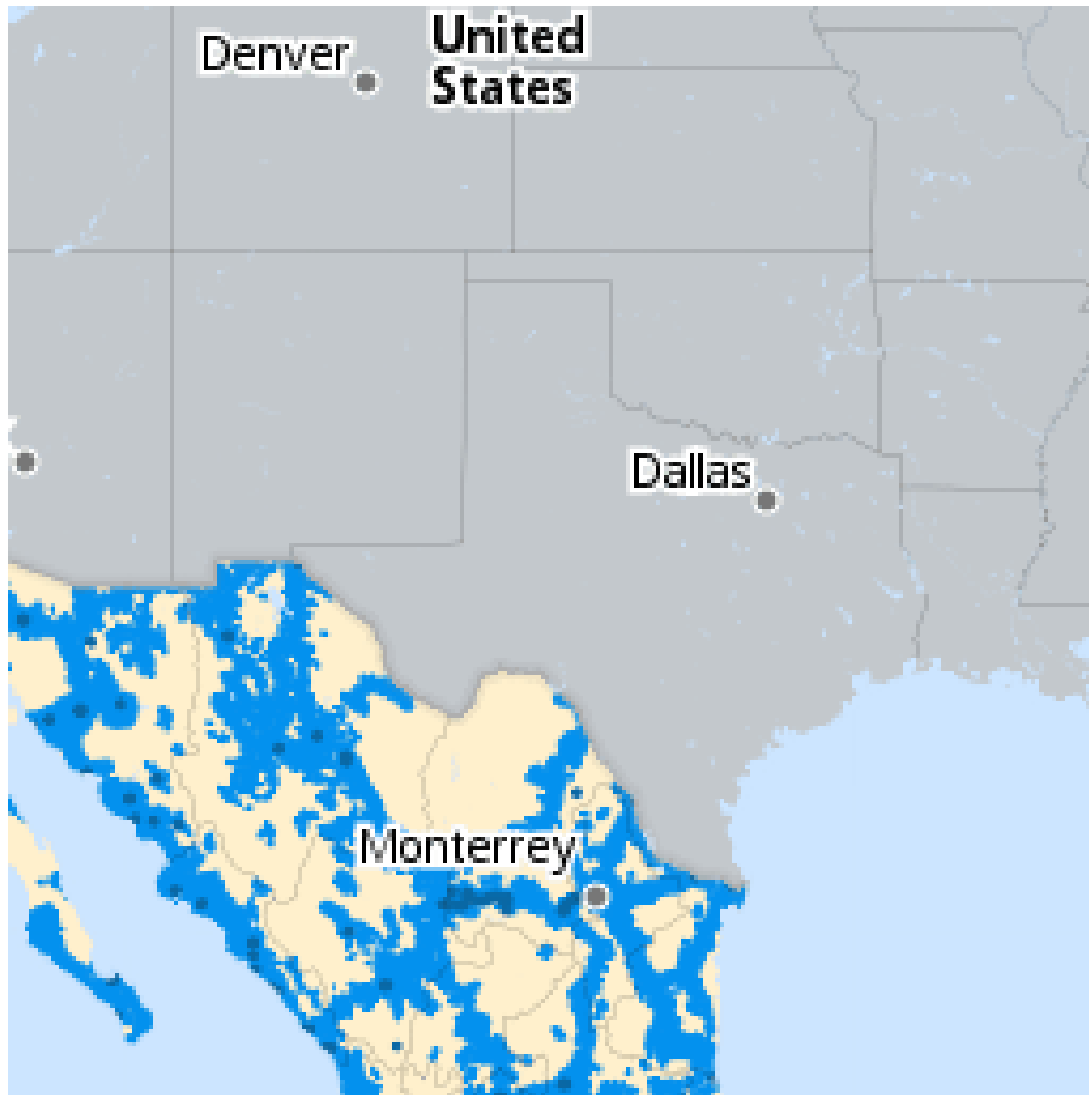
Data Coverage Legend

- 3G Roaming Data Coverage
- 2G Roaming Data Coverage
- No Service Available

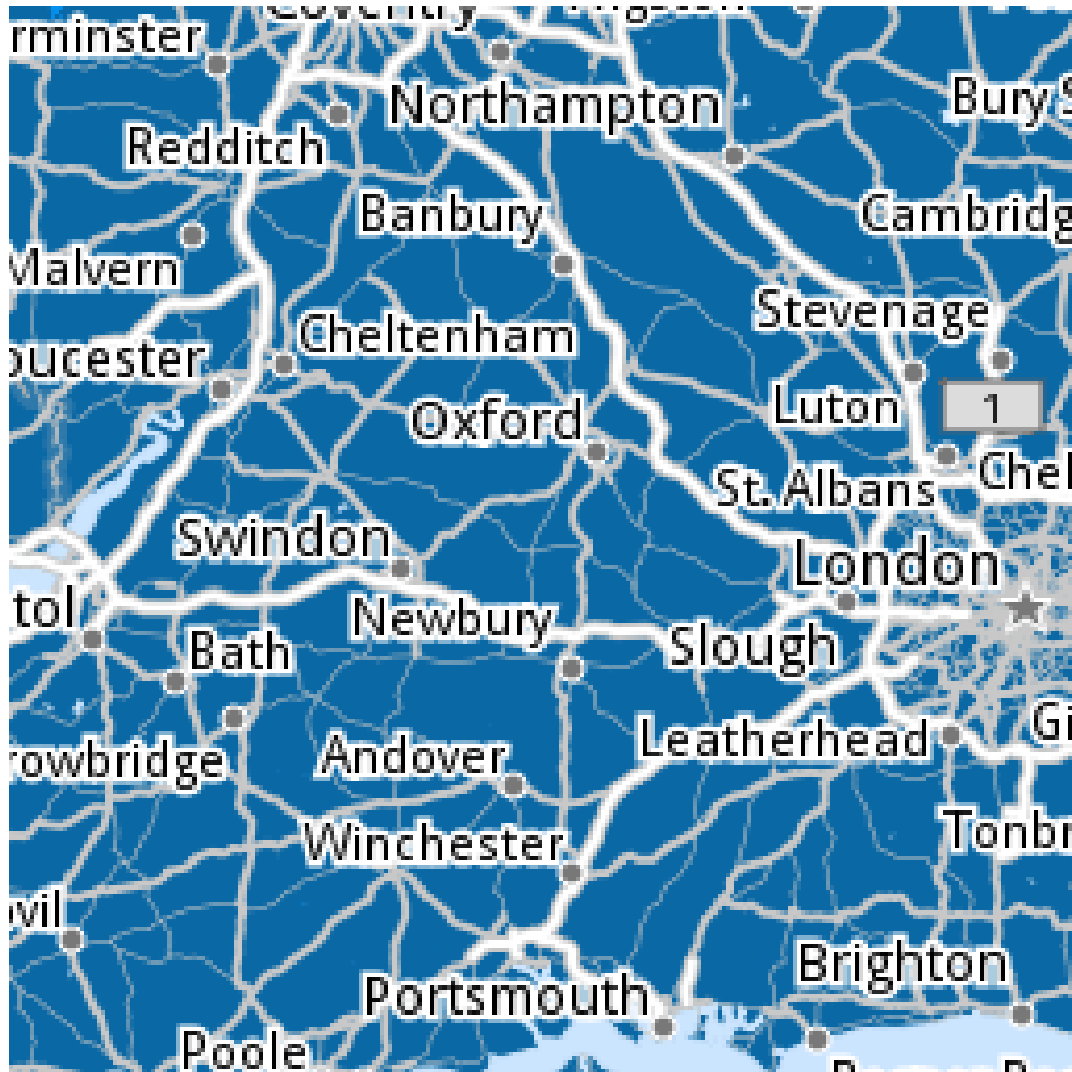
Japan



Mexico



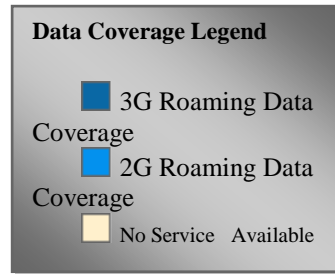
United Kingdom



Data Coverage Legend

- 3G Roaming Data Coverage
- 2G Roaming Data Coverage
- No Service Available

United Kingdom



Coverage Legend Terms

4G LTE: Long Term Evolution. These areas represent AT&T's fastest mobile Internet speeds. You'll know you're in our LTE coverage area when the 4G LTE network indicator appears next to the signal bars on your device. 4G LTE capable device required. If you are outside our LTE coverage area, you can still access services using our other 4G and 3G mobile broadband, and 2G networks where mobile broadband is not available. [Learn more about 4G LTE.](#)

4G: 4G Mobile Broadband - These areas represent AT&T's owned 4G HSPA+ network with enhanced backhaul. AT&T's 4G HSPA+ network is capable of delivering 4G speeds when combined with enhanced backhaul. [Learn more about 4G.](#)

3G: 3G Voice and 3G Mobile Broadband Data coverage is available in most metropolitan areas. 3G capable device and eligible rate plan required. However like all coverage it can and will be adversely affected by distance from cell site, weather, foliage, tower congestion and other factors. You'll know you're in our 3G coverage area when the 3G network indicator appears beside the signal bars on your phone. If you are outside our 3G coverage area, you can still access services using our EDGE network. [Learn more about 3G.](#)

2G (EDGE): These areas represent AT&T's owned GSM network providing EDGE - Enhanced Data rates for GSM Evolution coverage. Advanced mobile services like video and music clips, full picture & video messaging, high-speed color Internet access, and email on the move are possible. [Learn more about our technology.](#)

Partner 3G: This area represents the coverage of unaffiliated carriers with 3G Mobile Broadband service. Excessive use of Partner service may result in the loss of coverage in Partner areas as provided in your service terms.

Partner 2G: These areas represent unaffiliated partner network providing 2G mobile services, allowing advanced mobile services like video and music clips, full picture & video messaging, high-speed color Internet access, text, email, and basic WAP browsing. Excessive use of Partner service may result in the loss of coverage in Partner areas as provided in your service terms.

Important Information About the Coverage Maps

The AT&T's coverage viewer depicts a high-level approximation of wireless coverage. There are gaps in coverage that are not shown by this high-level approximation. Actual coverage may differ from map graphics and may be affected by terrain, weather, foliage, buildings and other construction, signal strength, high-usage periods, customer equipment and other factors. AT&T does not guarantee coverage and our coverage maps are not intended to show actual customer performance on the network, nor are they intended to show future network needs or build requirements inside or outside of AT&T's existing coverage areas. Coverage maps also may include areas served by unaffiliated carriers, and may depict licensed areas rather than an approximation of their coverage. Charges will be based on the location of the site receiving and transmitting the call, not the location of the subscriber. Your phone's display does not indicate the rate you will be charged.