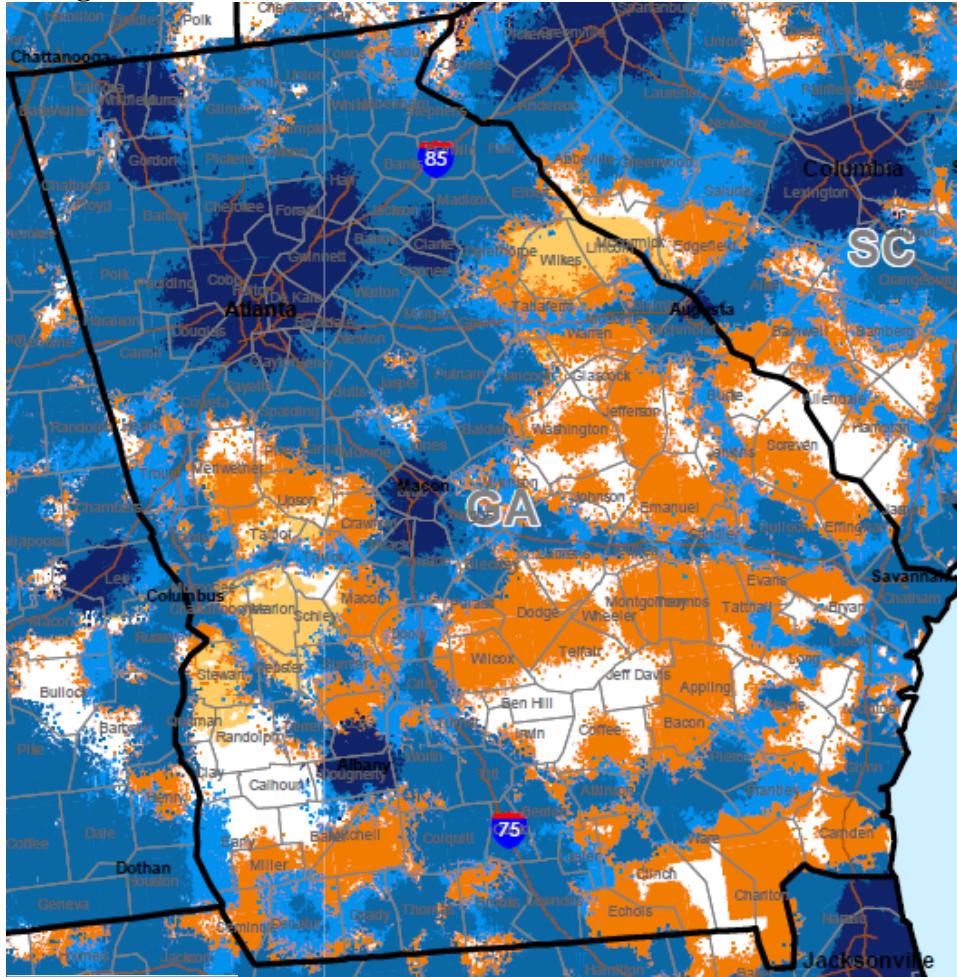
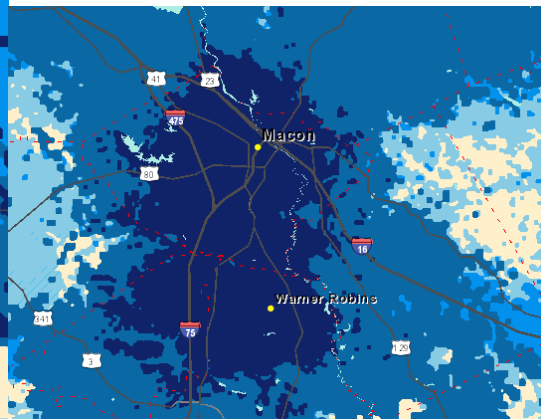
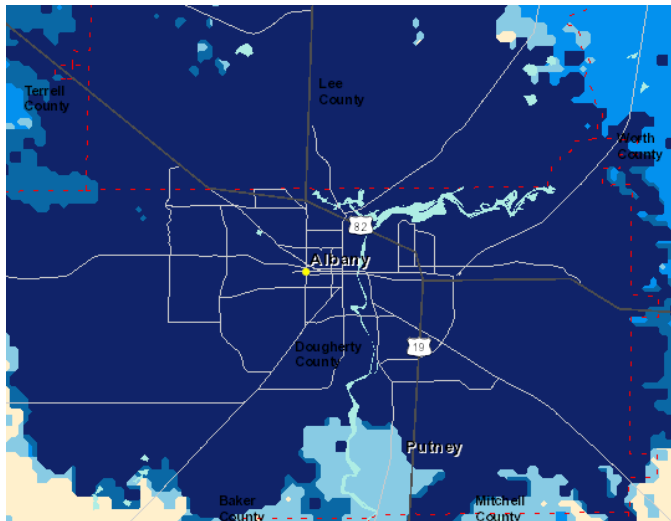
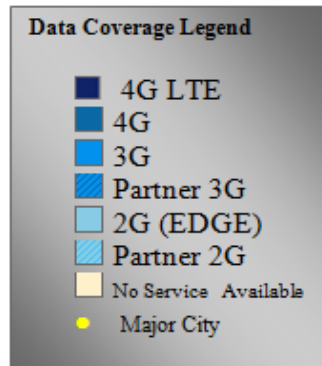
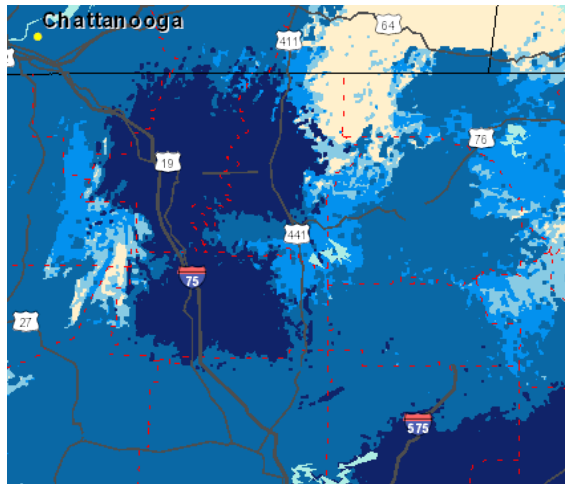
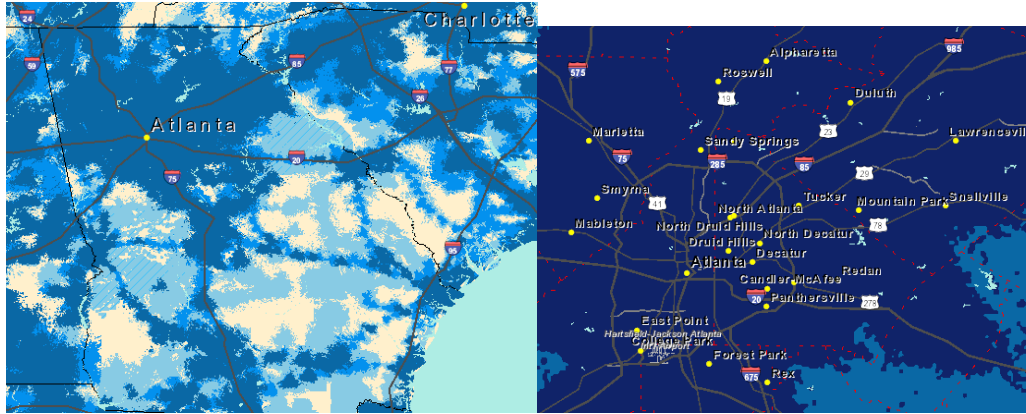


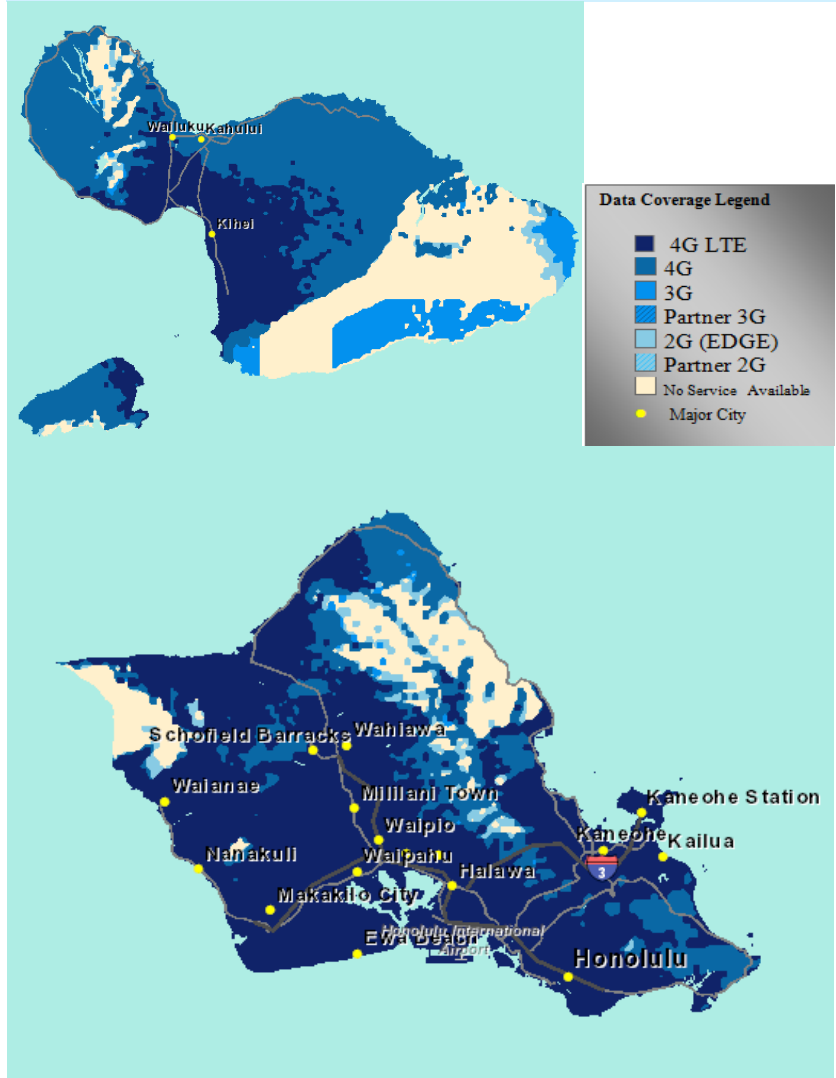
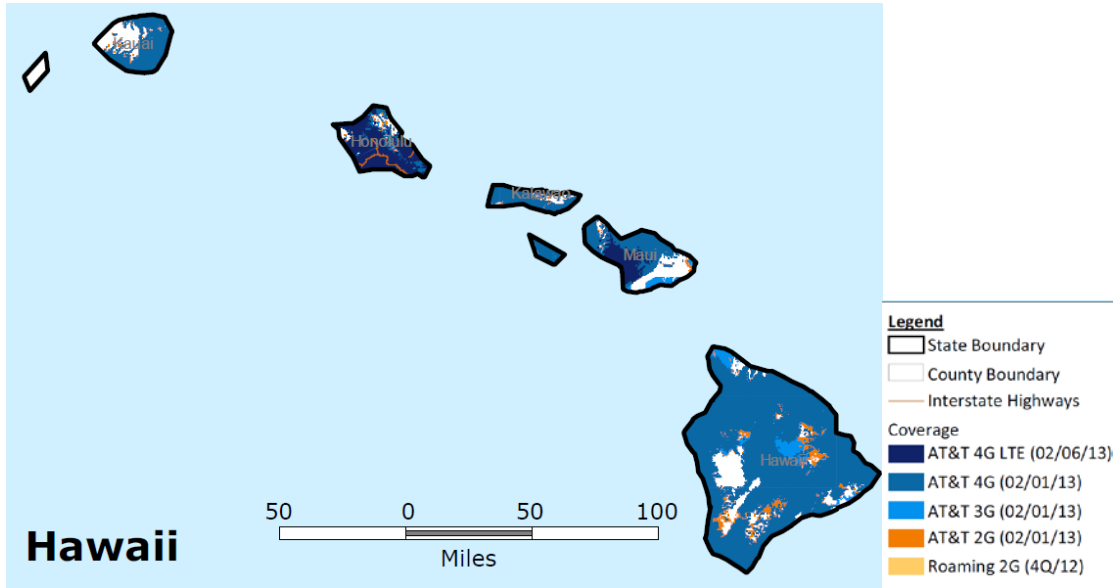
# Georgia



- Legend**
- State Boundary
  - County Boundary
  - Interstate Highways
- Coverage**
- AT&T 4G LTE (02/06/13)
  - AT&T 4G (02/01/13)
  - AT&T 3G (02/01/13)
  - AT&T 2G (02/01/13)
  - Roaming 2G (4Q/12)

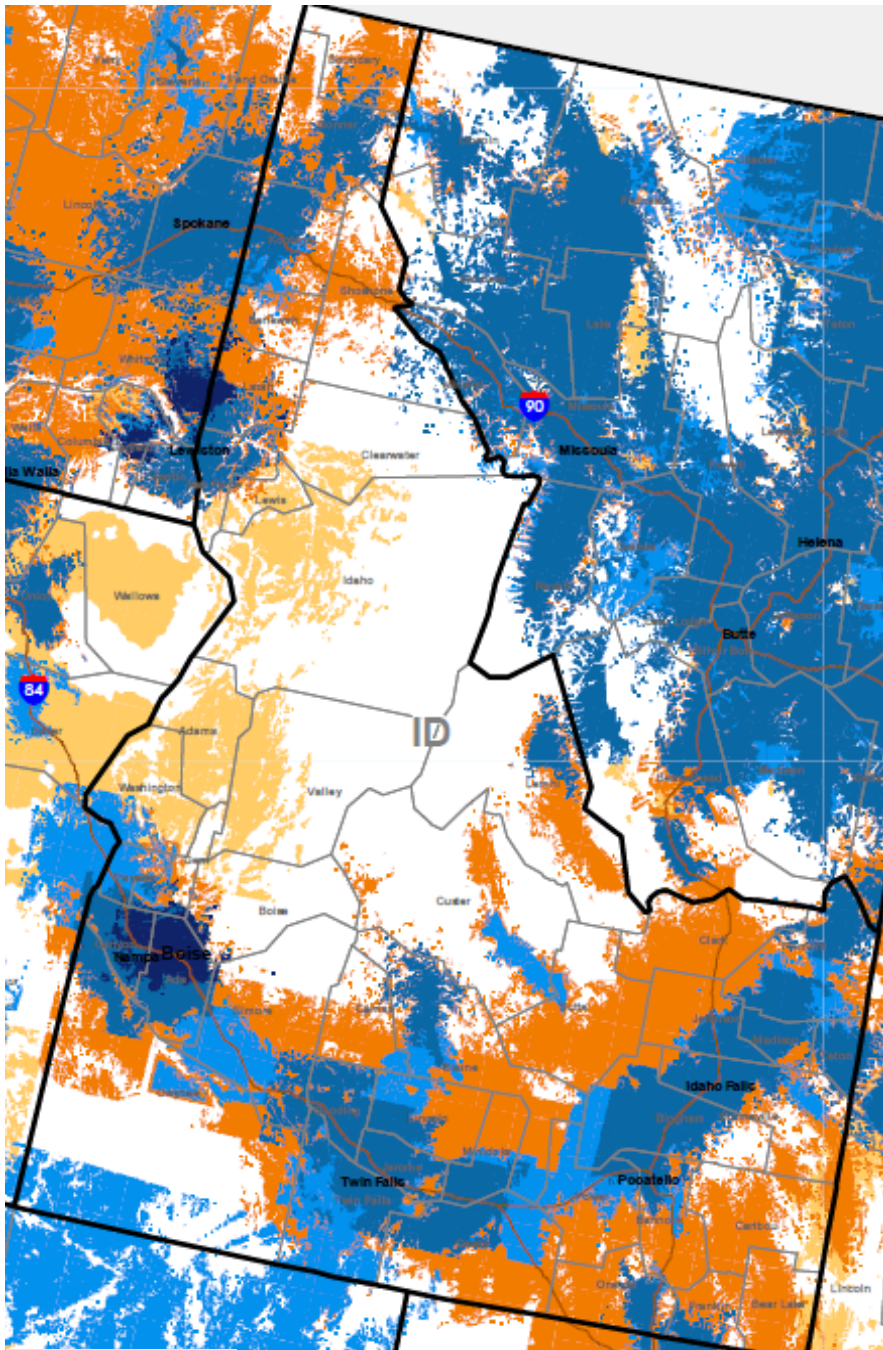


### Hawaii



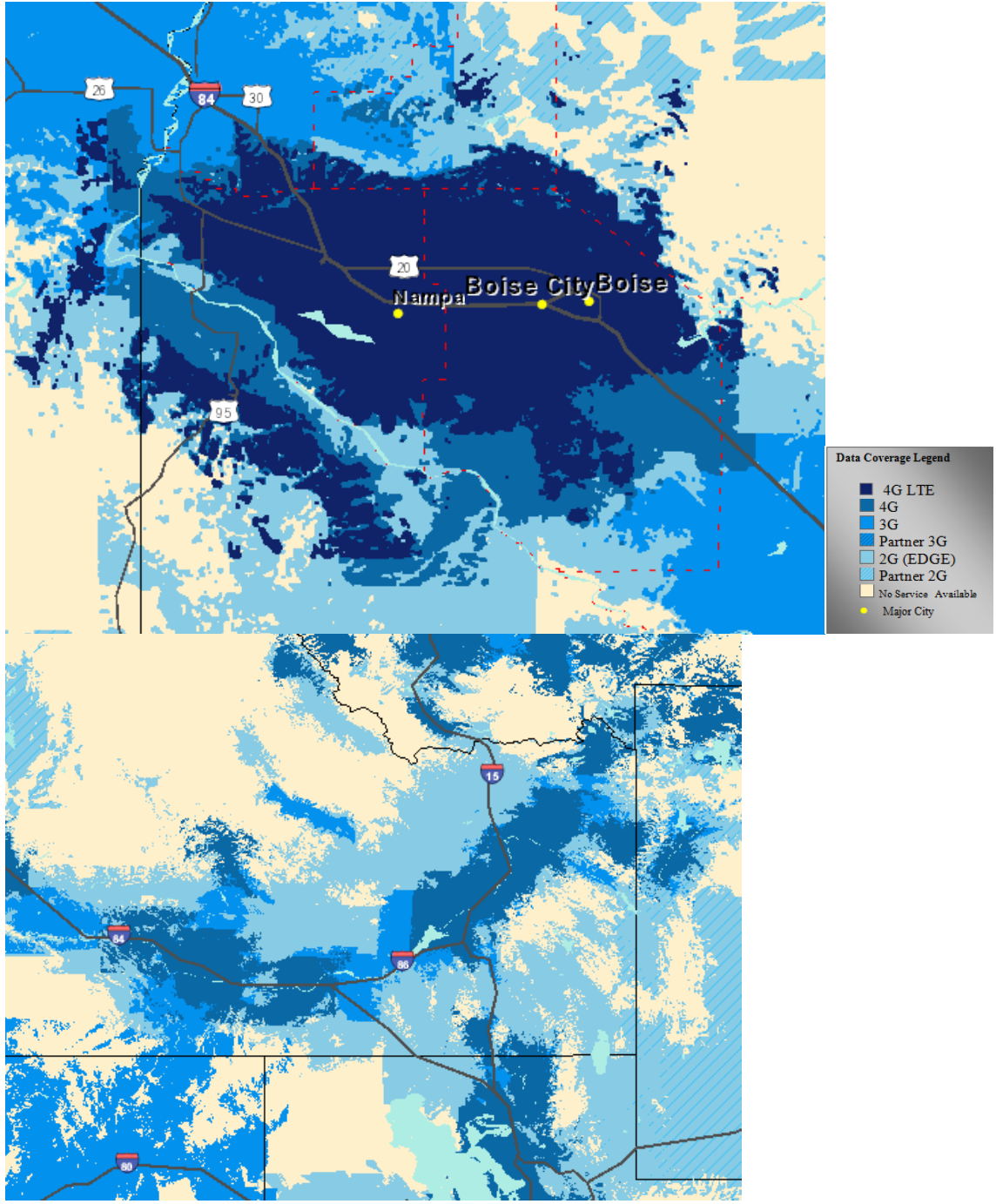
Use or disclosure of the data on this page or screen is subject to the restrictions on the title page or opening view screen of this proposal document or file.

# Idaho

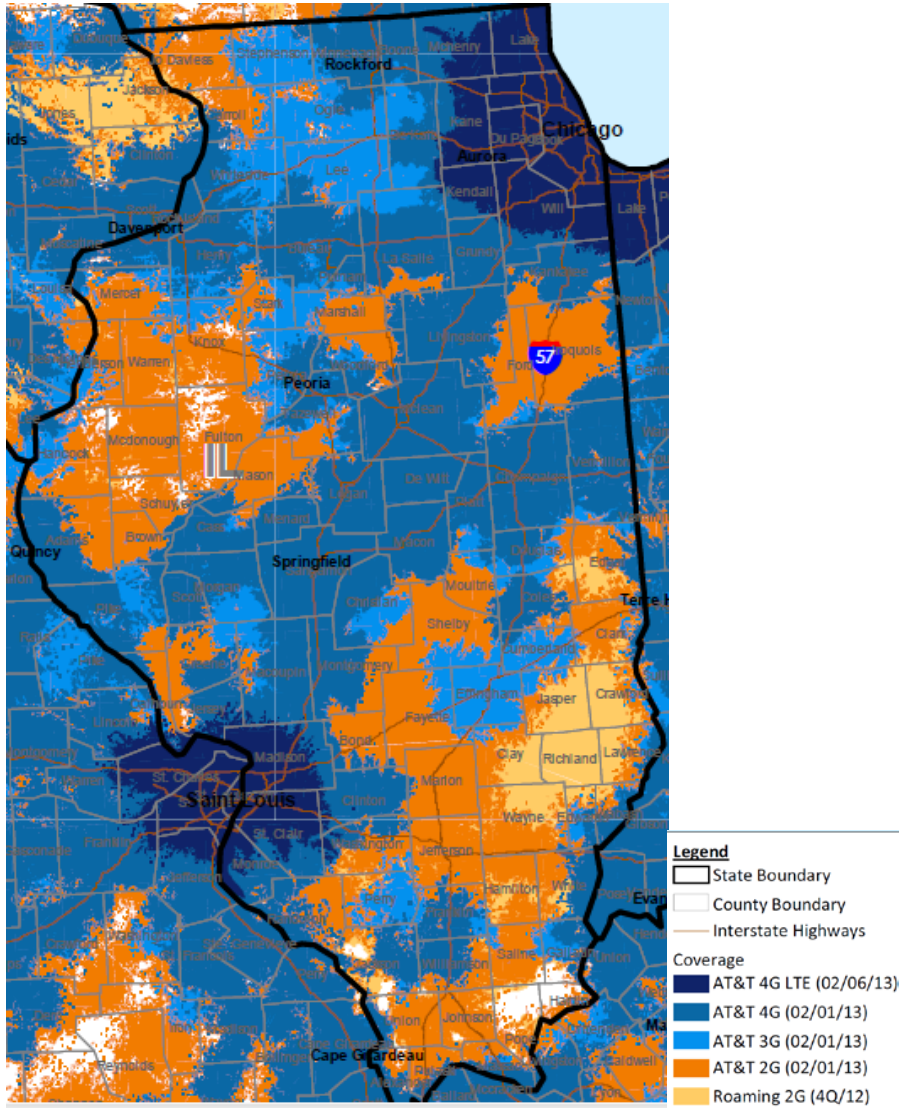


- Legend**
- State Boundary
  - County Boundary
  - Interstate Highways
- Coverage
- AT&T 4G LTE (02/06/13)
  - AT&T 4G (02/01/13)
  - AT&T 3G (02/01/13)
  - AT&T 2G (02/01/13)
  - Roaming 2G (4Q/12)

Use or disclosure of the data on this page or screen is subject to the restrictions on the title page or opening view screen of this proposal document or file.



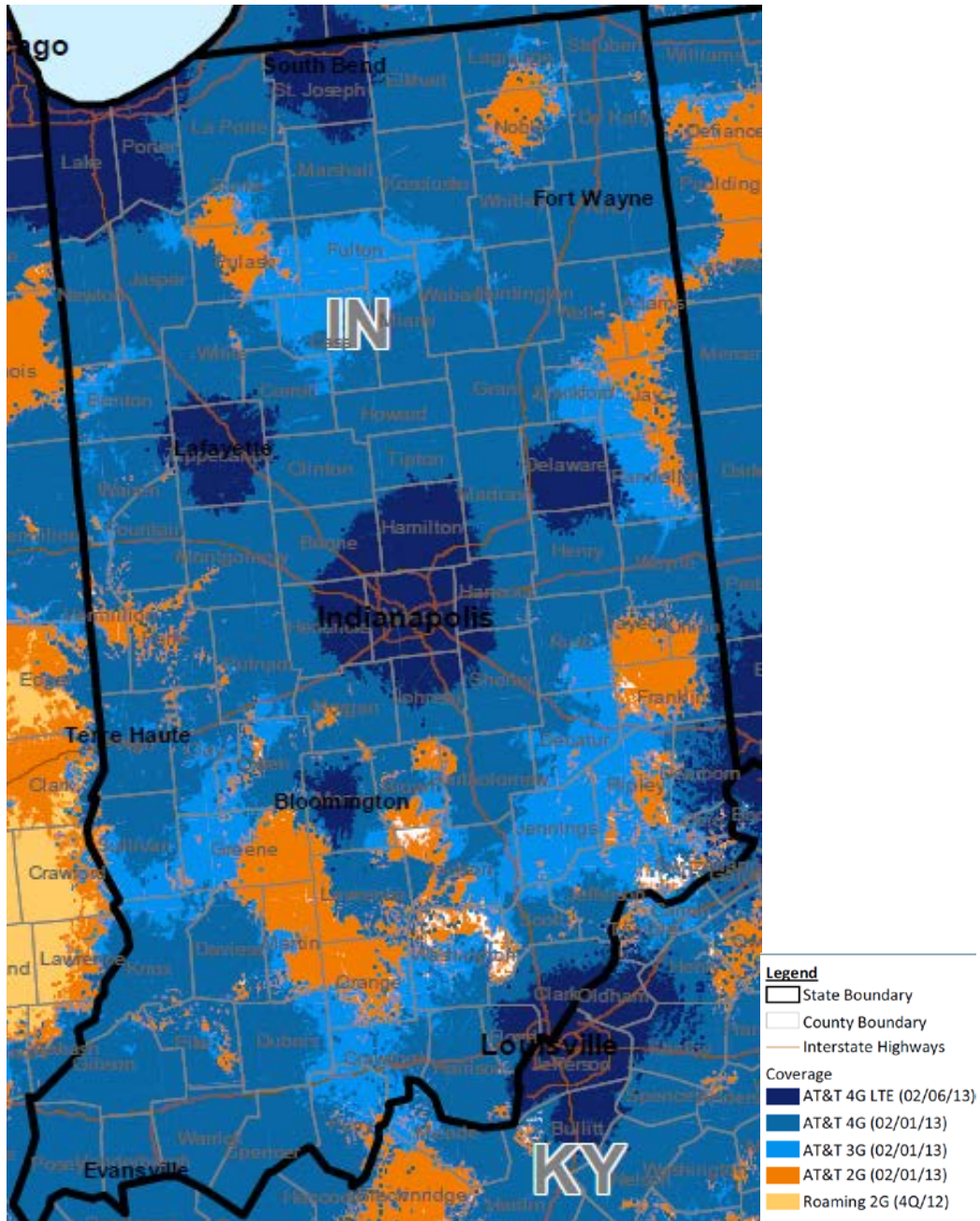
# Illinois

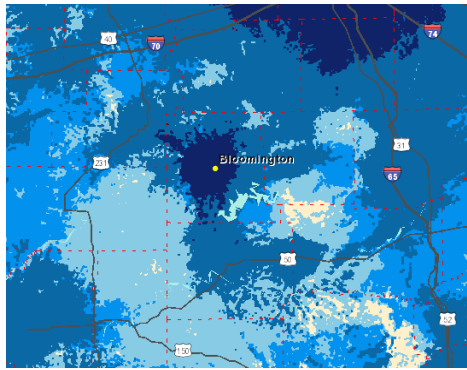
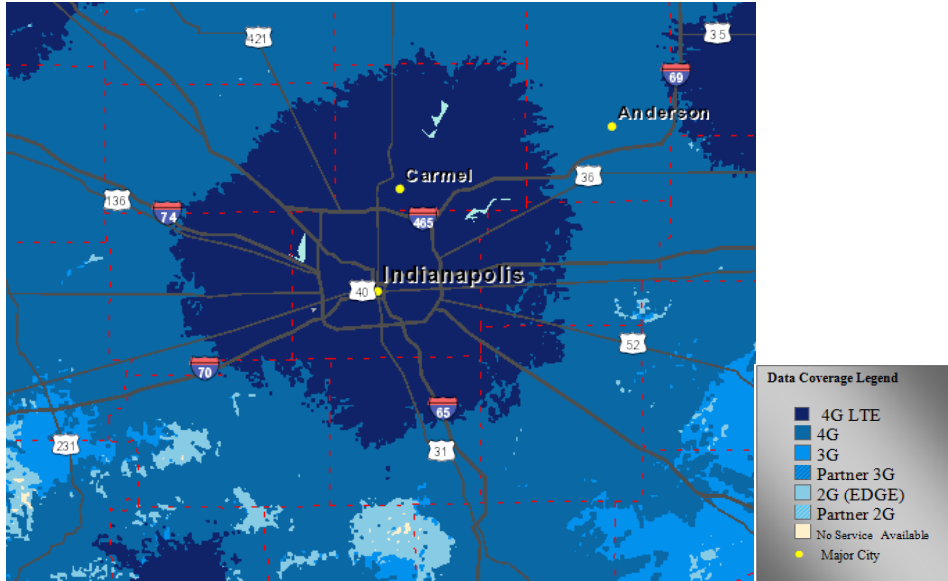


Use or disclosure of the data on this page or screen is subject to the restrictions on the title page or opening view screen of this proposal document or file.

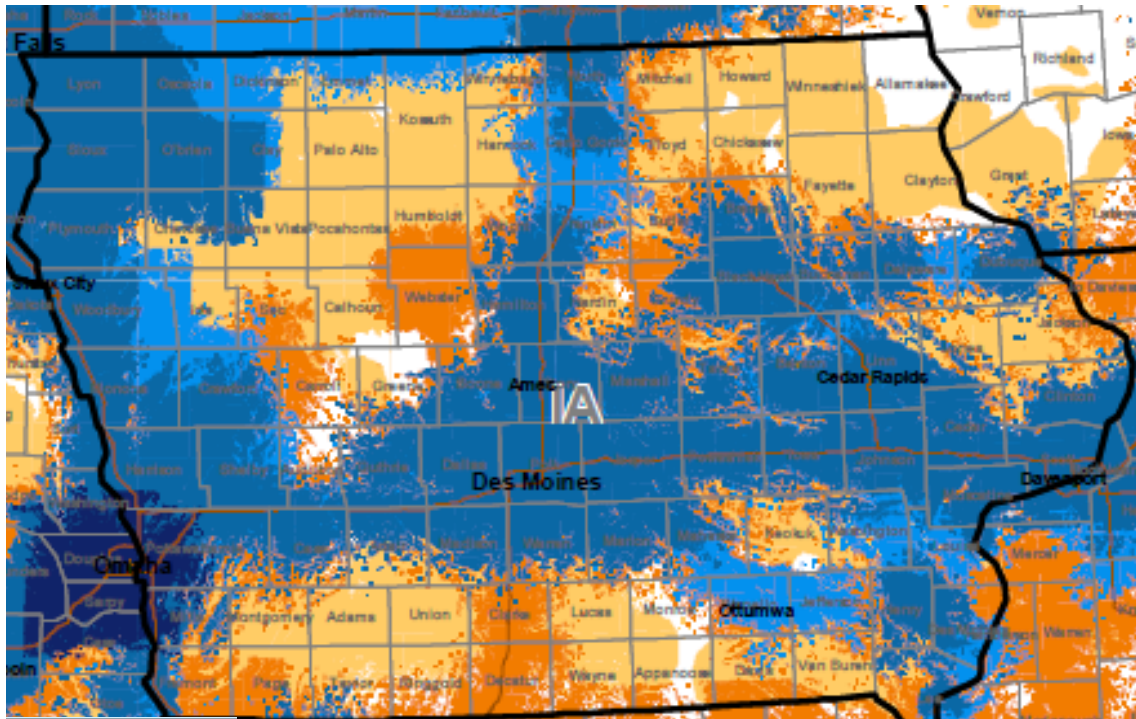


### Indiana



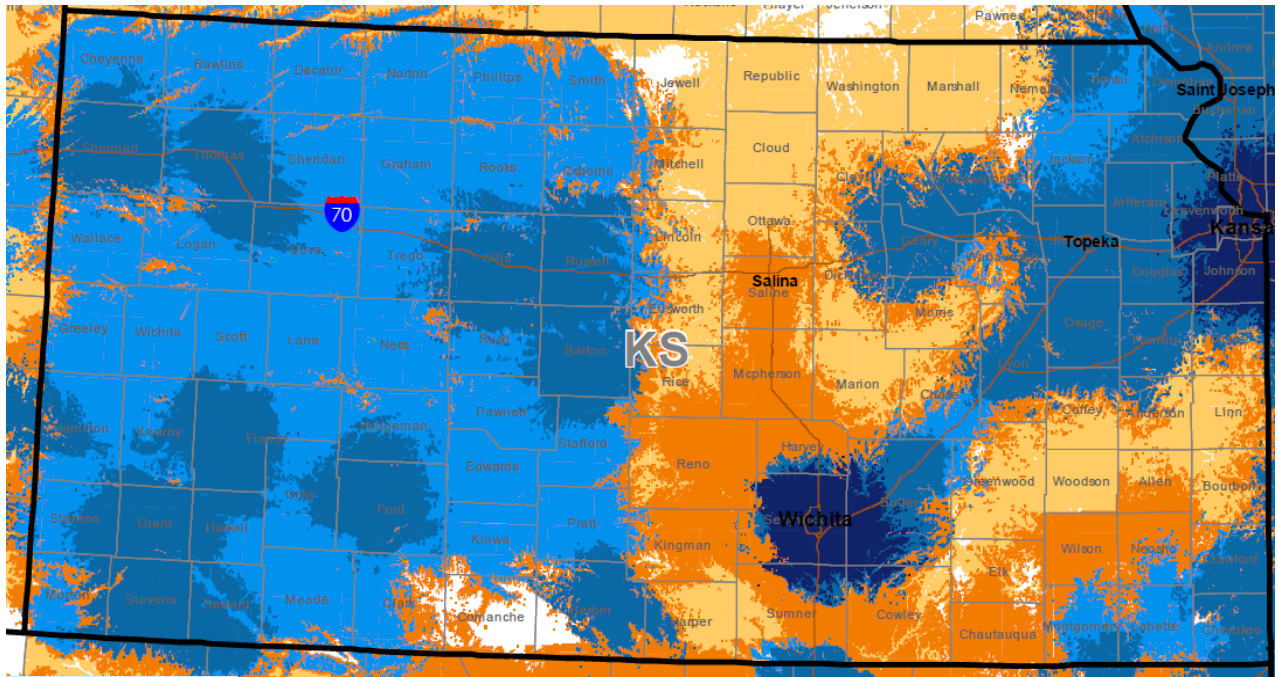


## Iowa



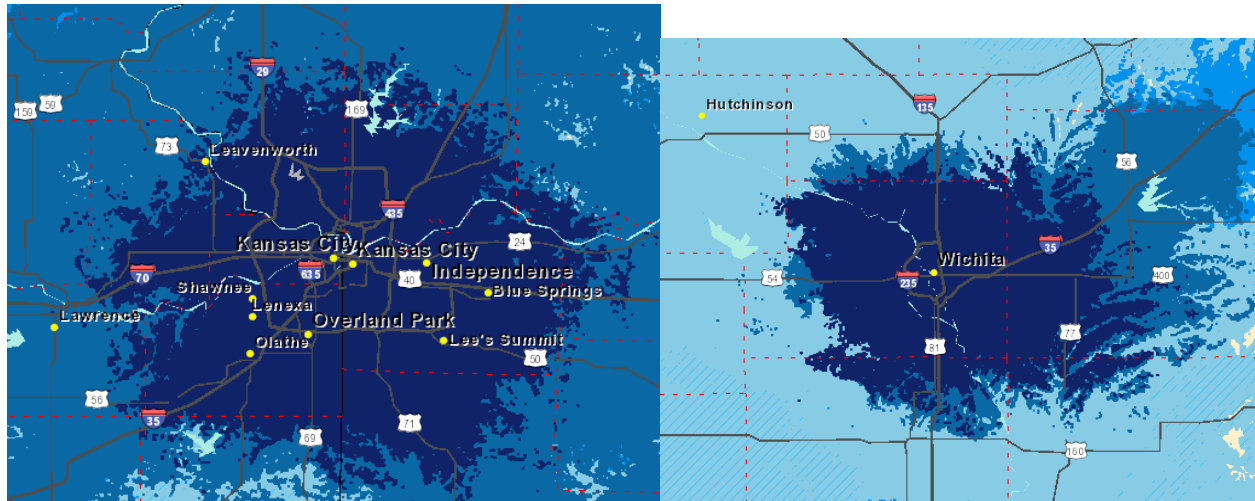
- Legend**
- State Boundary
  - County Boundary
  - Interstate Highways
- Coverage
- AT&T 4G LTE (02/06/13)
  - AT&T 4G (02/01/13)
  - AT&T 3G (02/01/13)
  - AT&T 2G (02/01/13)
  - Roaming 2G (4Q/12)

# Kansas



- Legend**
- State Boundary
  - County Boundary
  - Interstate Highways

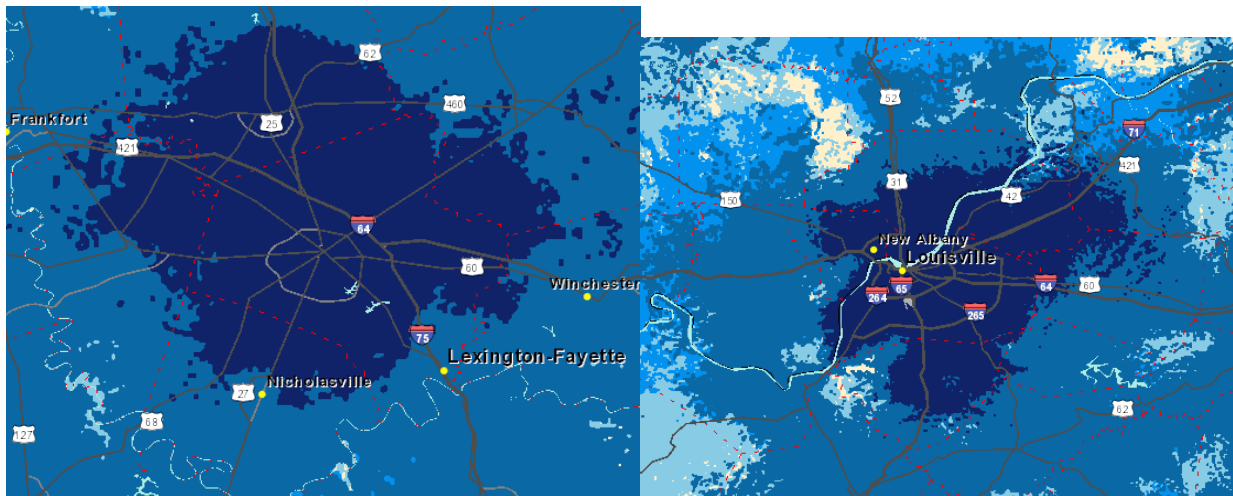
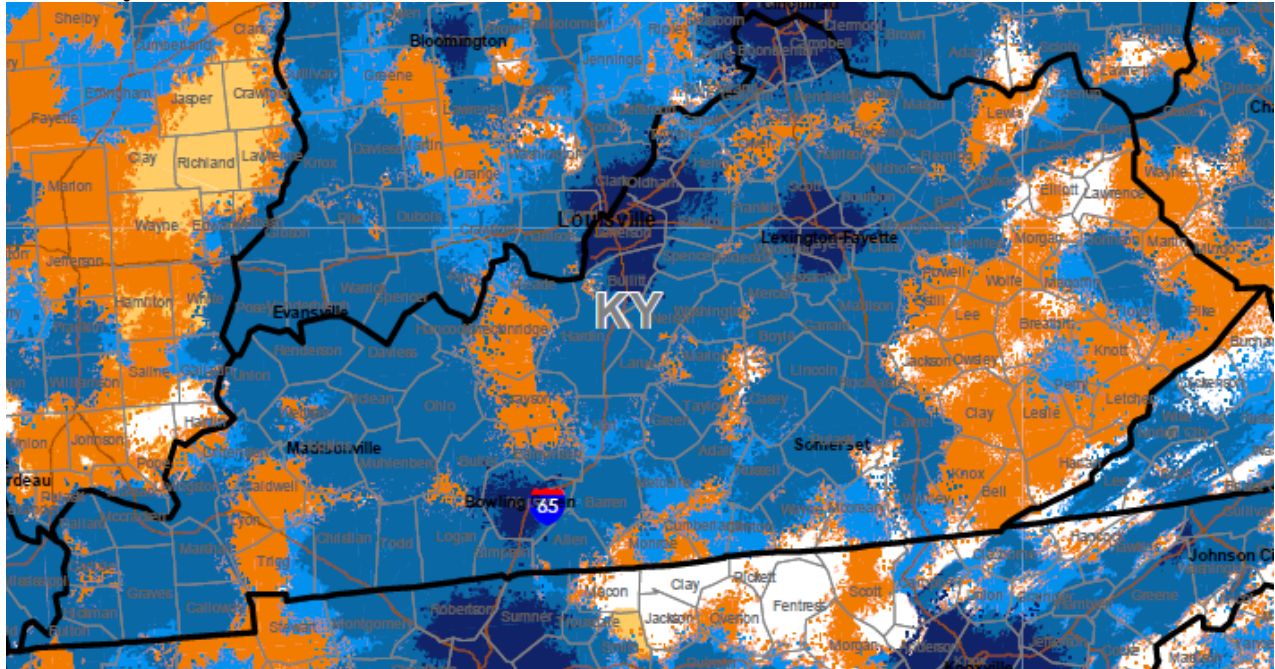
- Coverage**
- AT&T 4G LTE (02/06/13)
  - AT&T 4G (02/01/13)
  - AT&T 3G (02/01/13)
  - AT&T 2G (02/01/13)
  - Roaming 2G (4Q/12)



- Data Coverage Legend**
- 4G LTE
  - 4G
  - 3G
  - Partner 3G
  - 2G (EDGE)
  - Partner 2G
  - No Service Available
  - Major City

Use or disclosure of the data on this page or screen is subject to the restrictions on the title page or opening view screen of this proposal document or file.

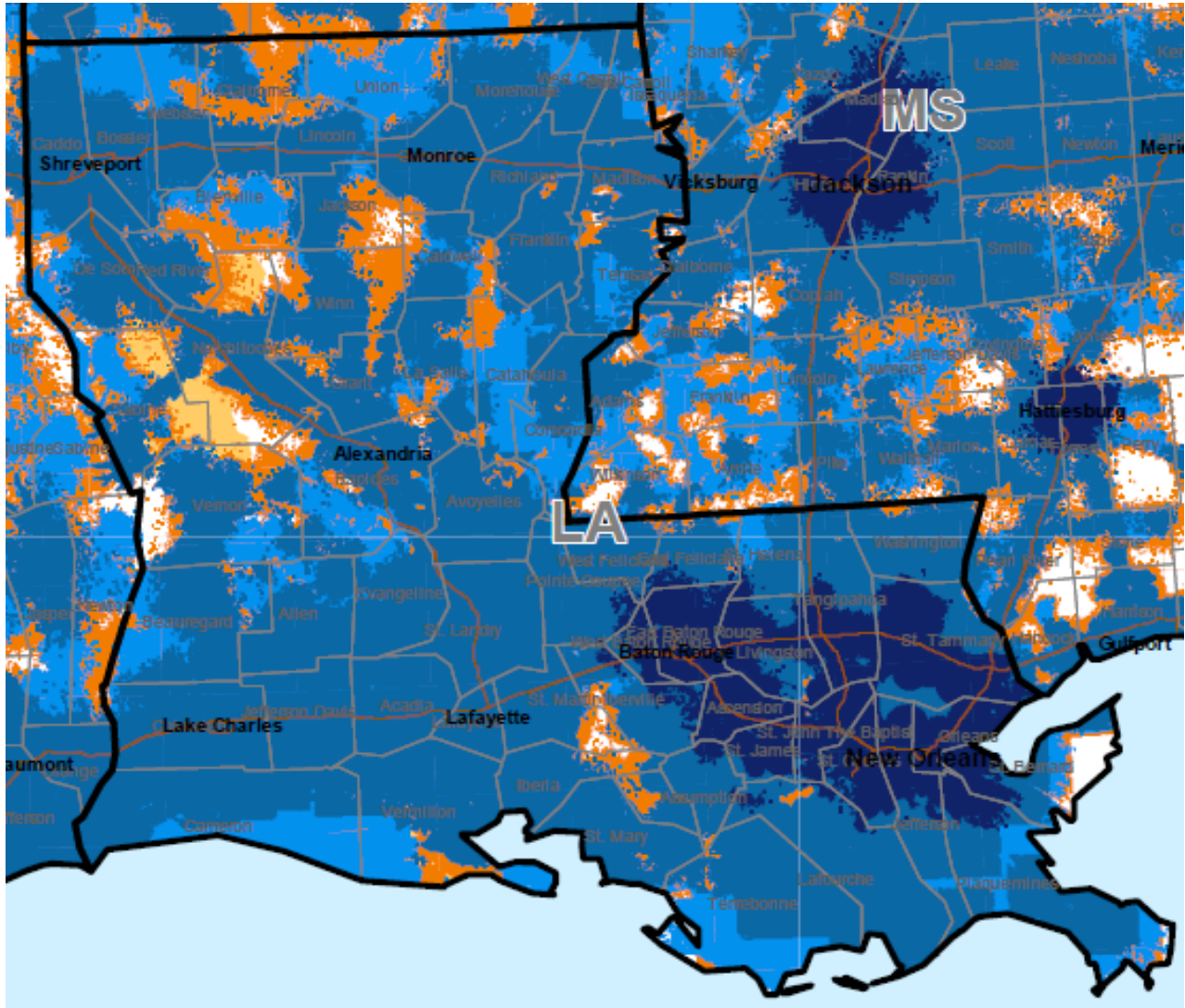
# Kentucky



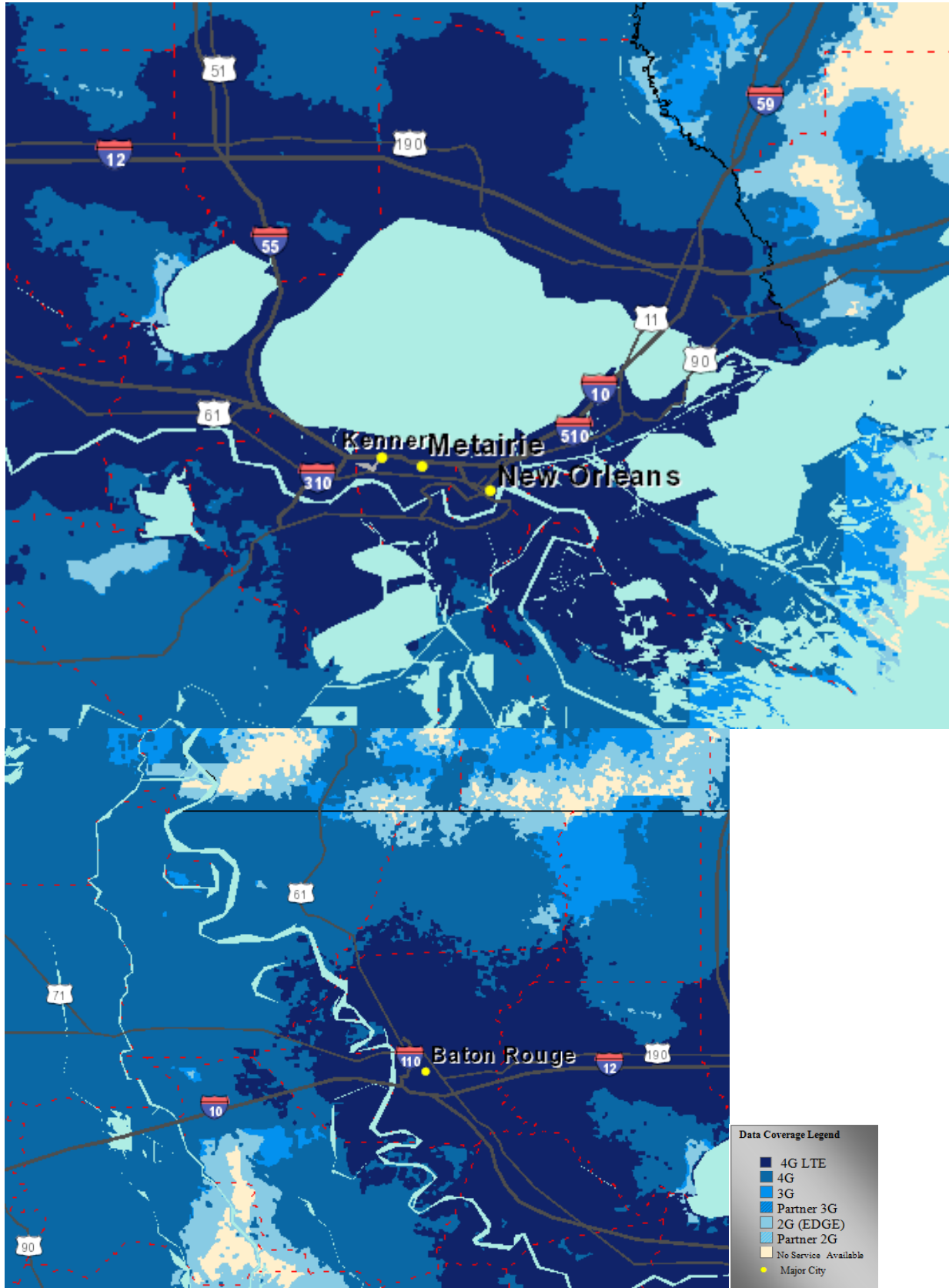
Data Coverage Legend	
Dark Blue	4G LTE
Medium Blue	4G
Light Blue	3G
Lightest Blue	Partner 3G
Very Light Blue	2G (EDGE)
Lightest Blue	Partner 2G
Yellow	No Service Available
Yellow Dot	Major City

Use or disclosure of the data on this page or screen is subject to the restrictions on the title page or opening view screen of this proposal document or file.

### Louisiana

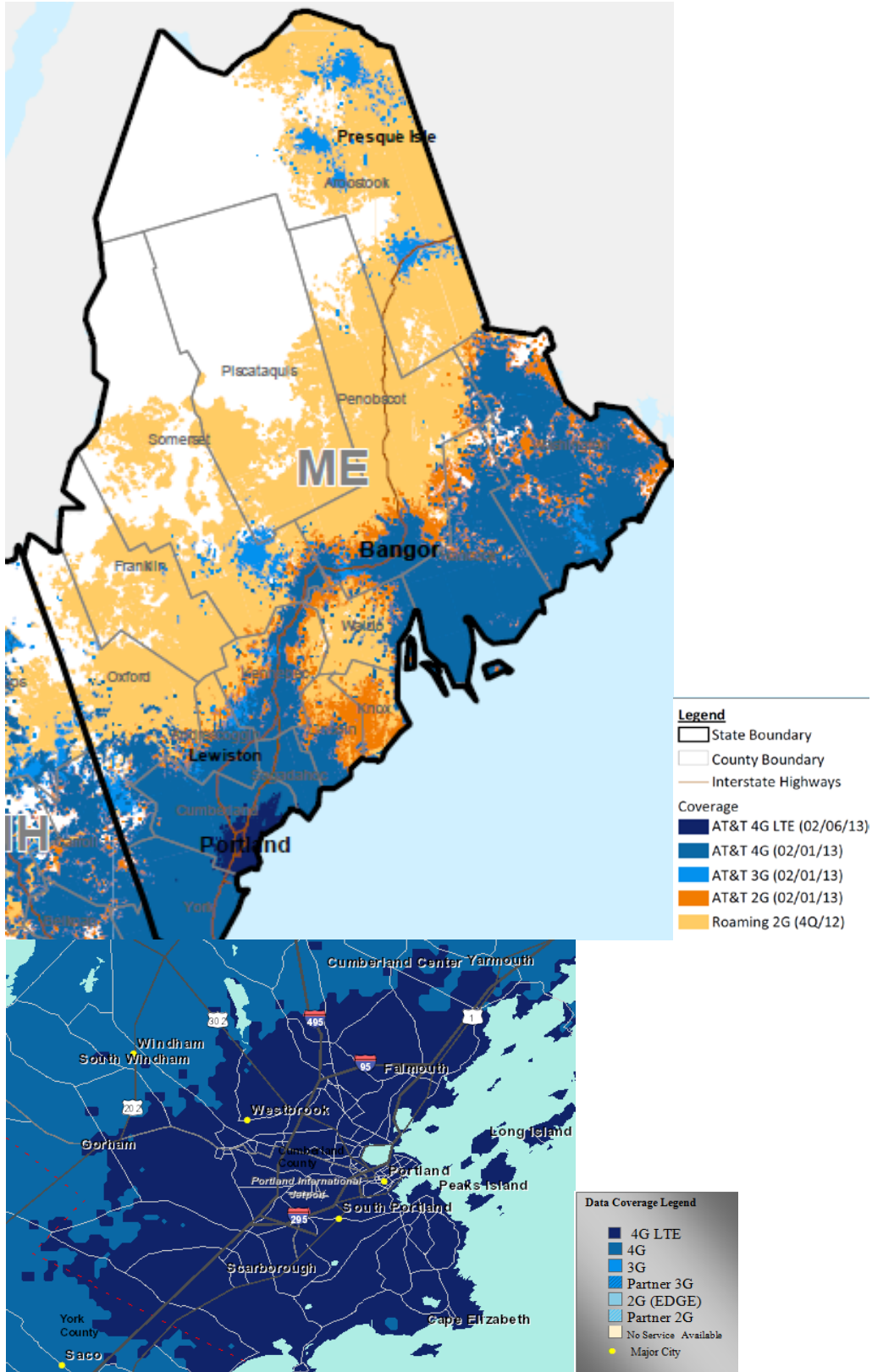


- Legend**
- State Boundary
  - County Boundary
  - Interstate Highways
- Coverage
- AT&T 4G LTE (02/06/13)
  - AT&T 4G (02/01/13)
  - AT&T 3G (02/01/13)
  - AT&T 2G (02/01/13)
  - Roaming 2G (4Q/12)



Use or disclosure of the data on this page or screen is subject to the restrictions on the title page or opening view screen of this proposal document or file.

# Maine

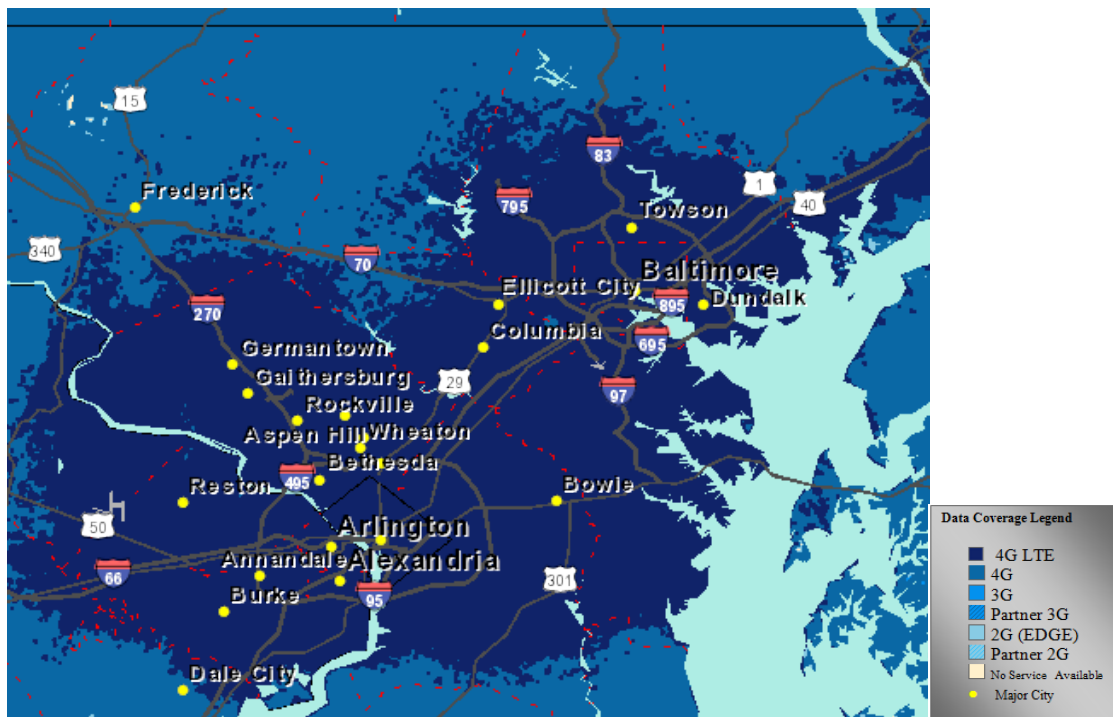
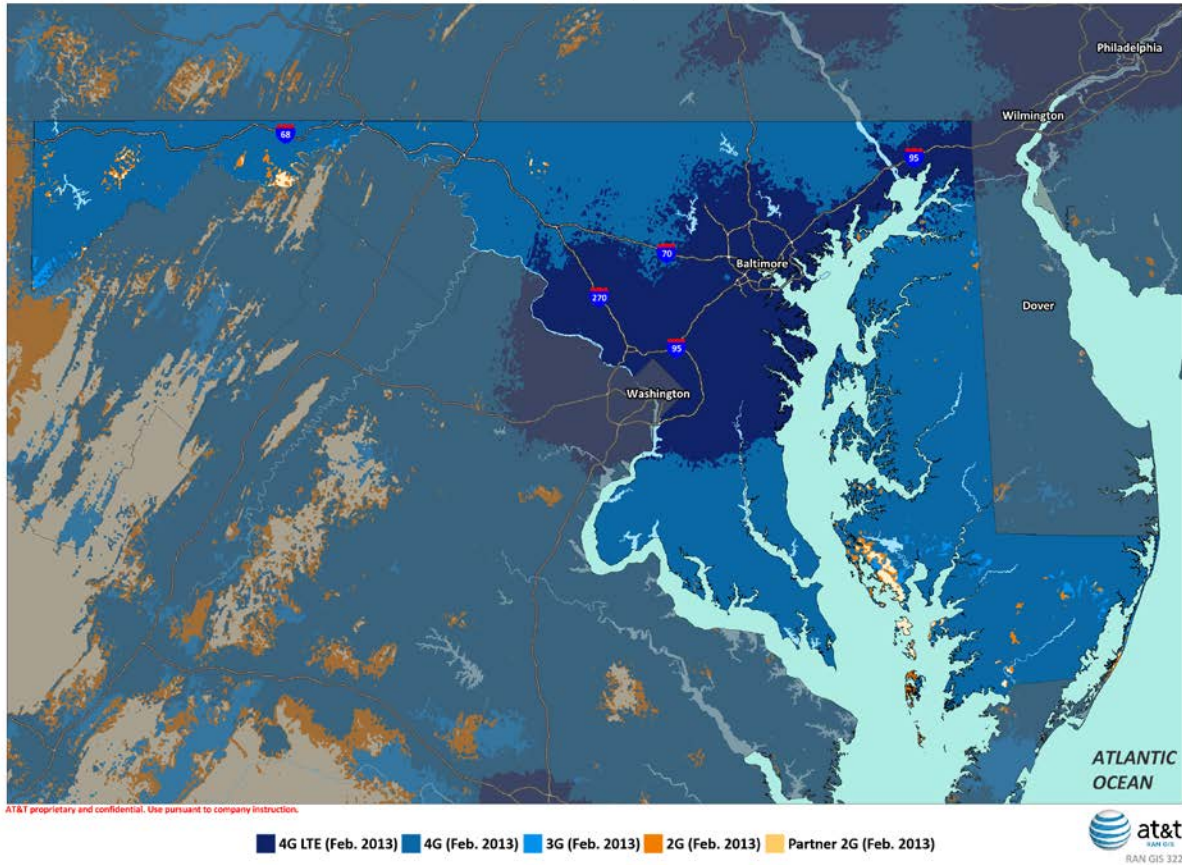


Use or disclosure of the data on this page or screen is subject to the restrictions on the title page or opening view screen of this proposal document or file.



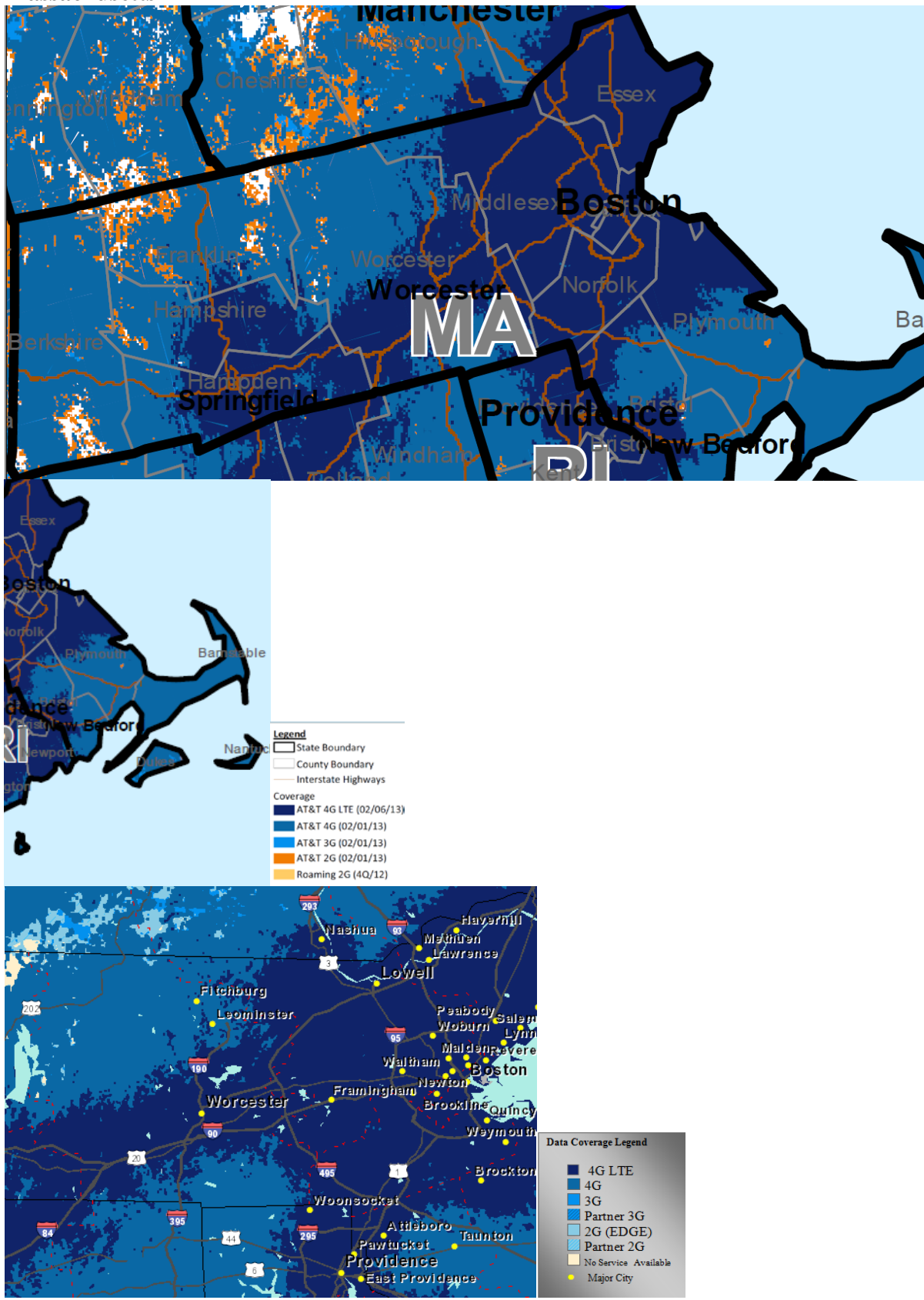
# Maryland

## AT&T Current Coverage for Maryland



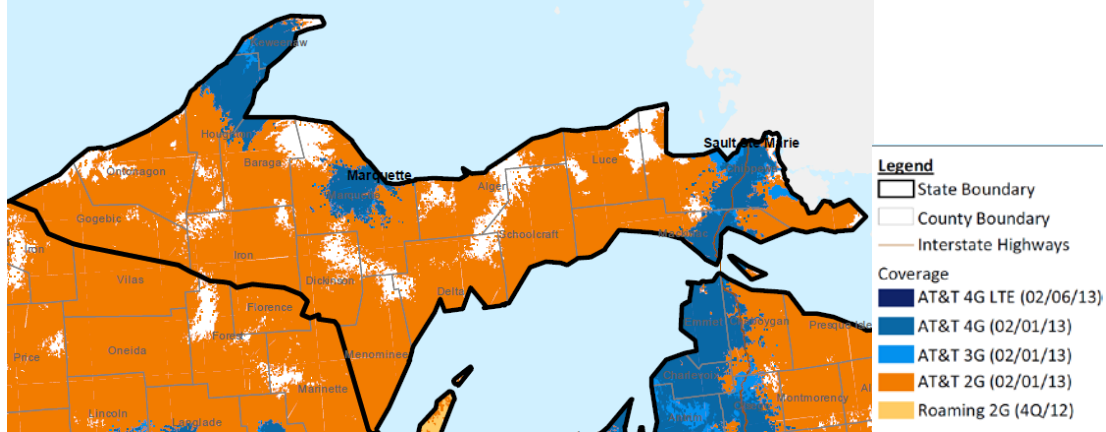
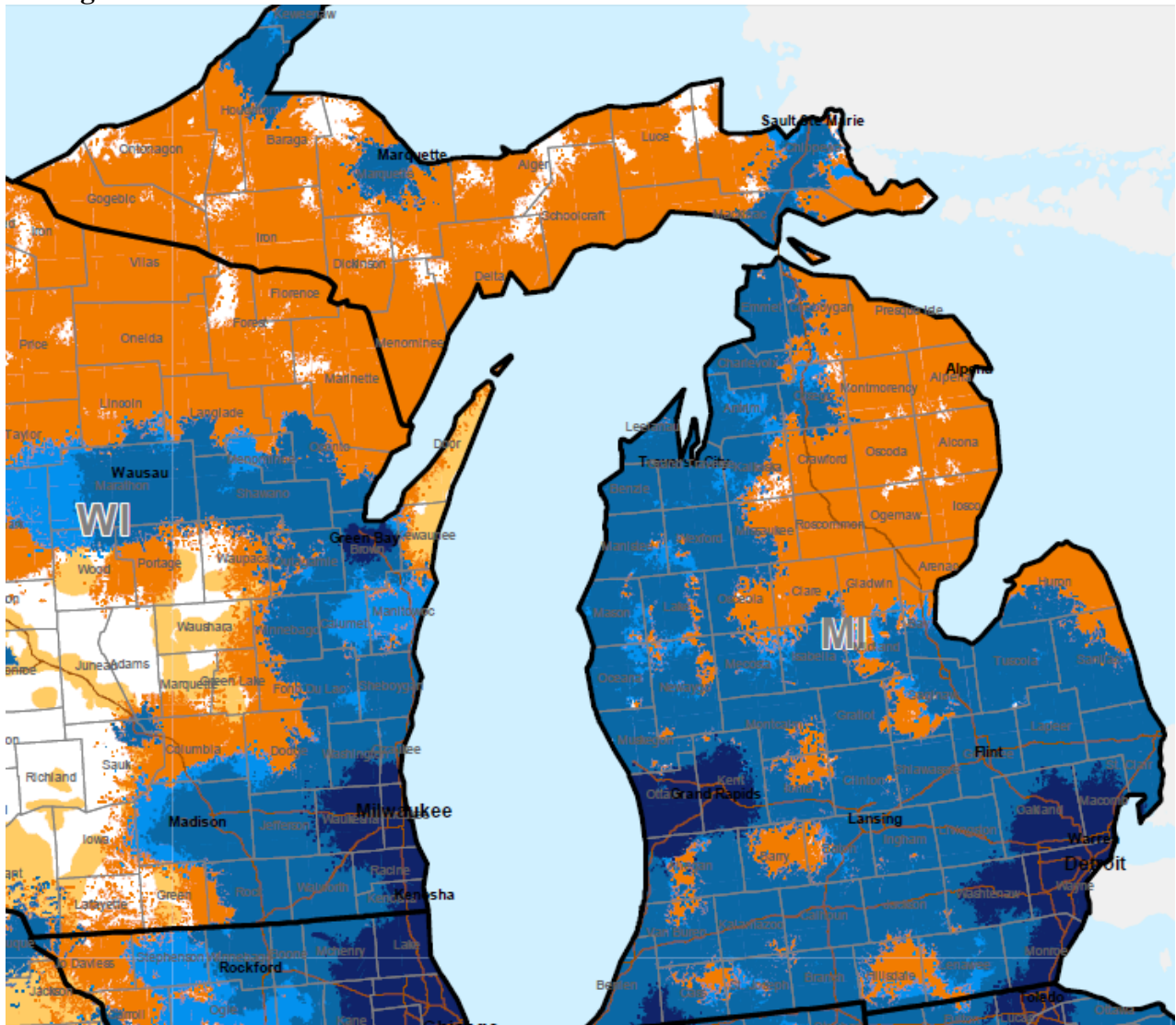
Use or disclosure of the data on this page or screen is subject to the restrictions on the title page or opening view screen of this proposal document or file.

### Massachusetts



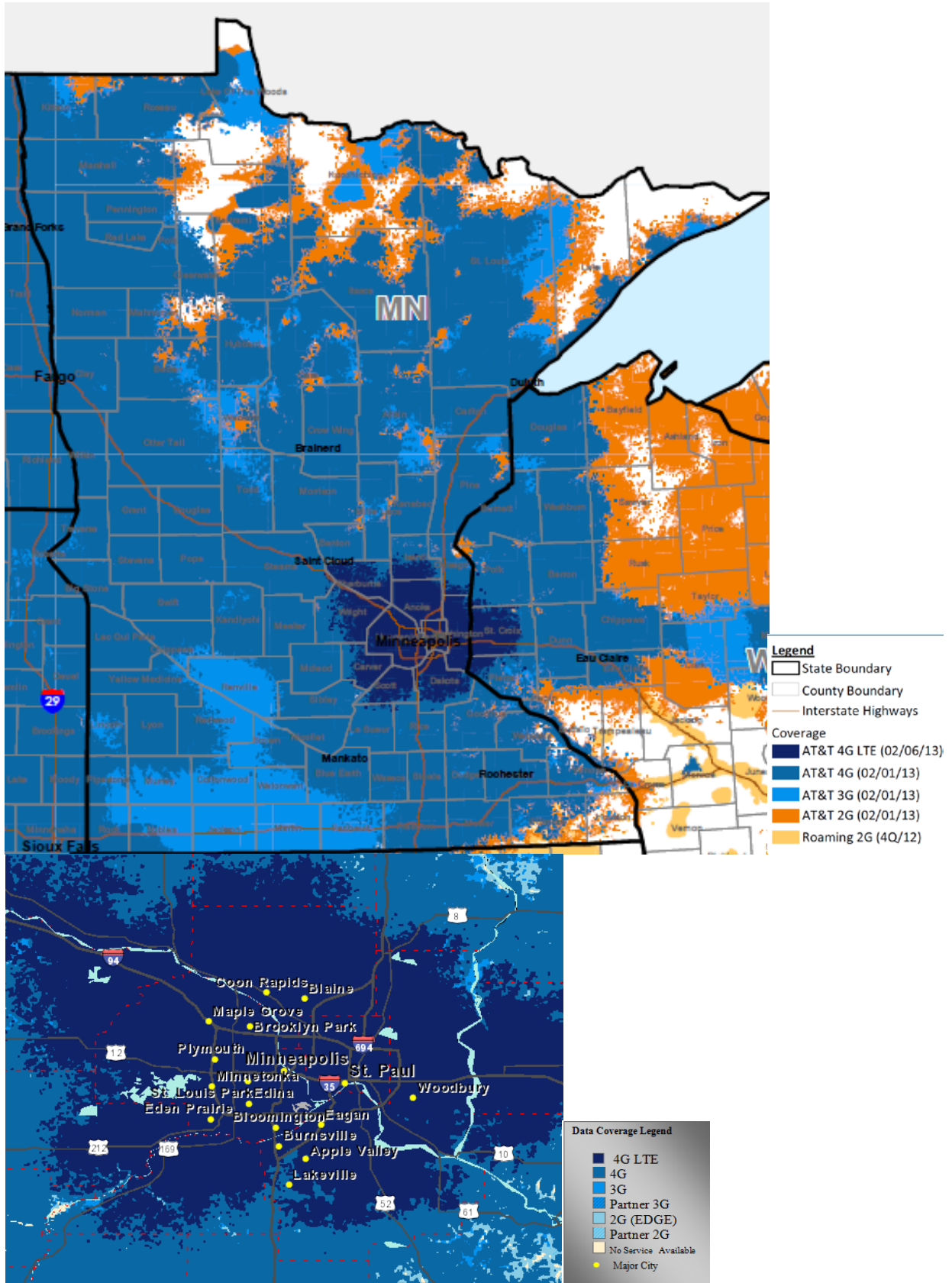
Use or disclosure of the data on this page or screen is subject to the restrictions on the title page or opening view screen of this proposal document or file.

# Michigan



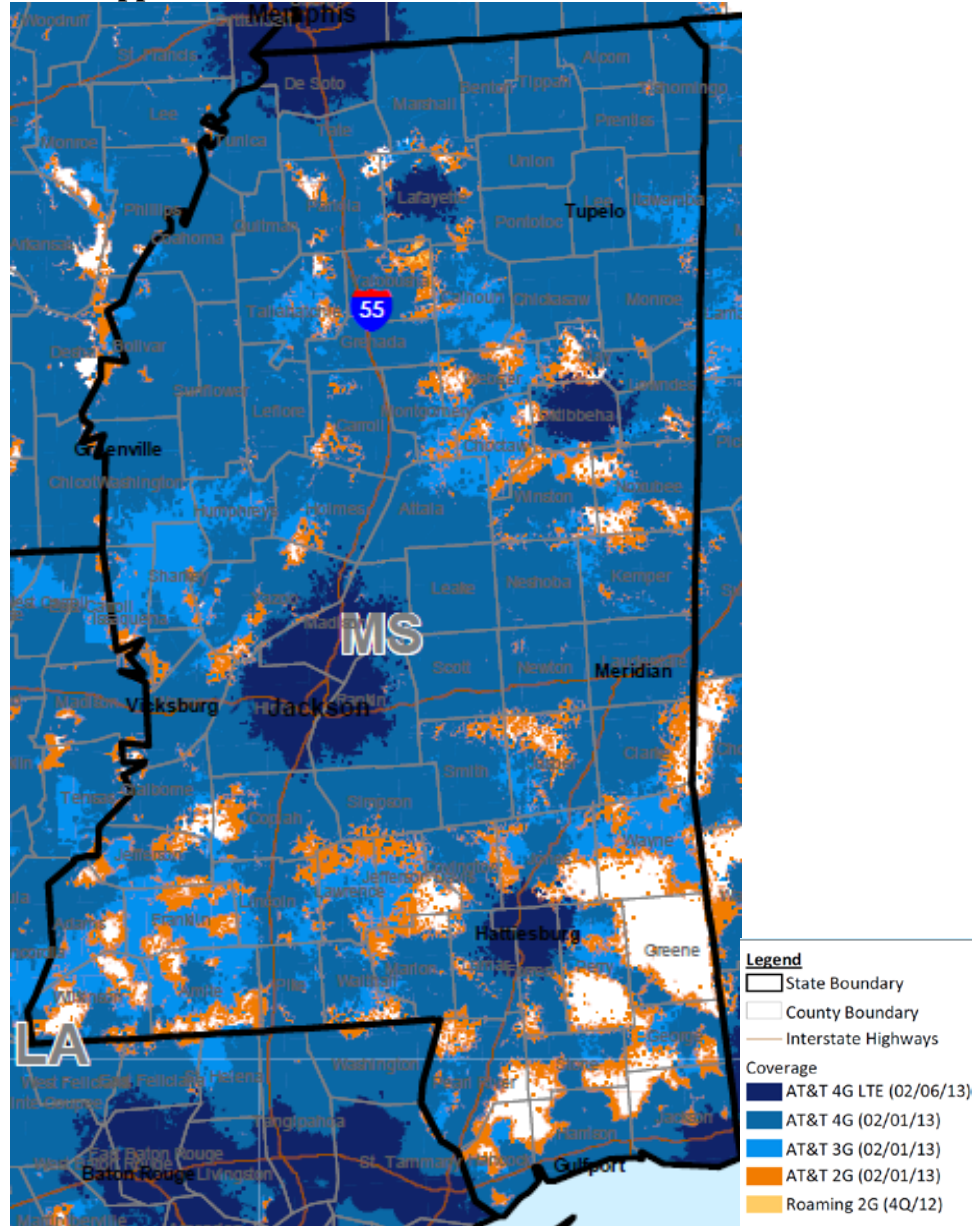
Use or disclosure of the data on this page or screen is subject to the restrictions on the title page or opening view screen of this proposal document or file.

# Minnesota



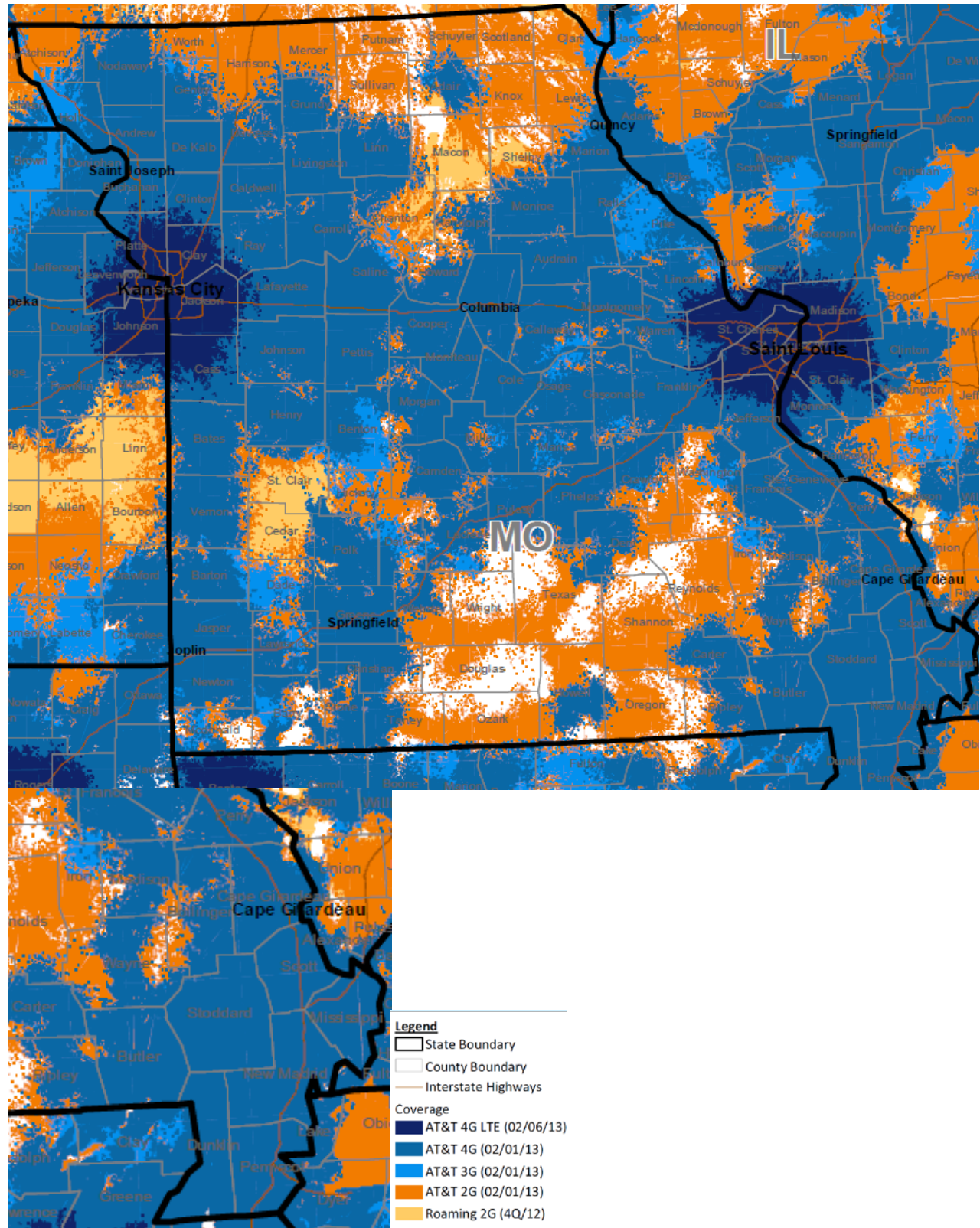
Use or disclosure of the data on this page or screen is subject to the restrictions on the title page or opening view screen of this proposal document or file.

### Mississippi



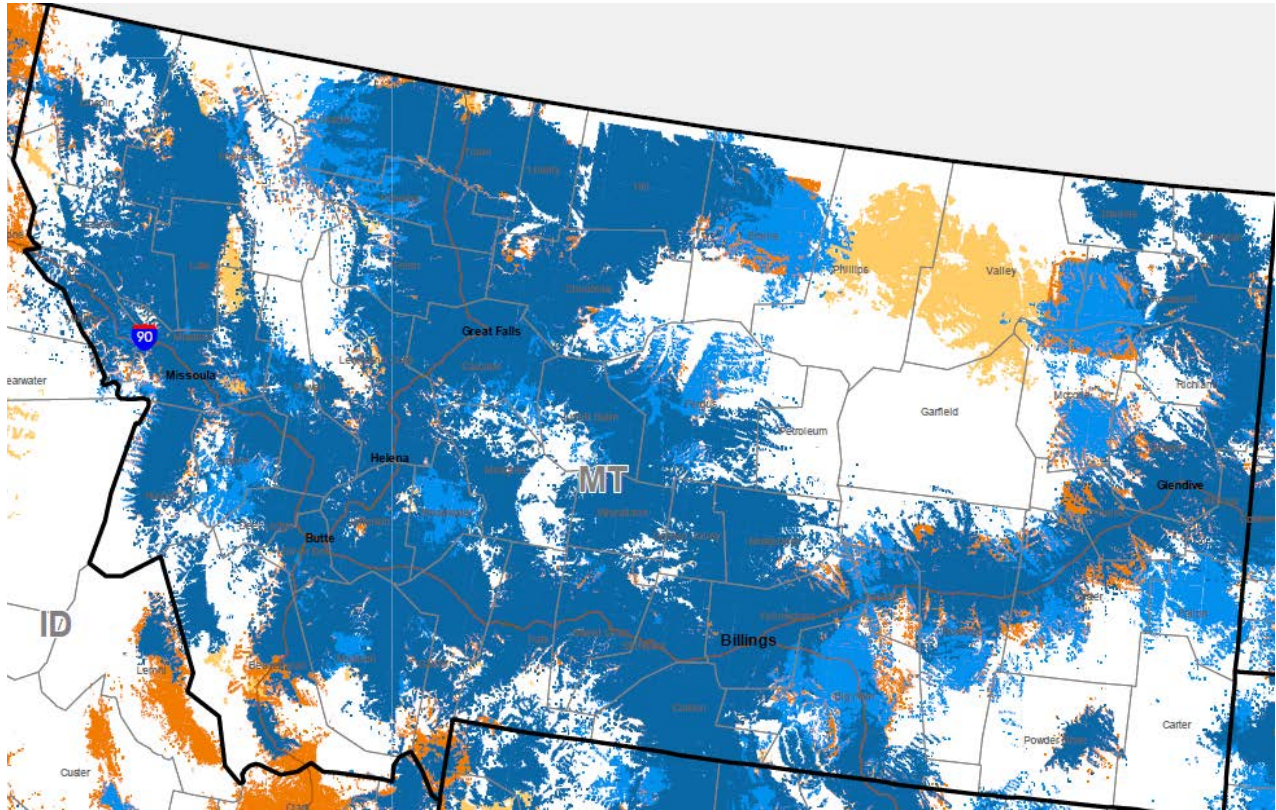
Use or disclosure of the data on this page or screen is subject to the restrictions on the title page or opening view screen of this proposal document or file.

# Missouri

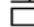




Use or disclosure of the data on this page or screen is subject to the restrictions on the title page or opening view screen of this proposal document or file.






## Montana



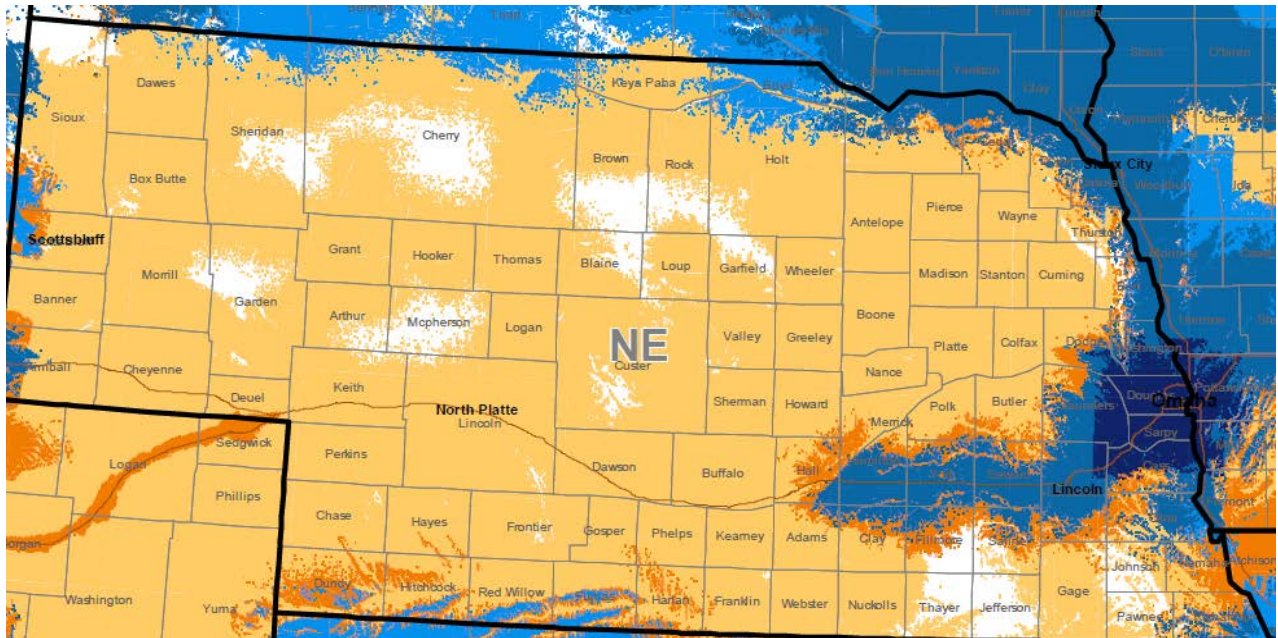
### Legend

-  State Boundary
-  County Boundary
-  Interstate Highways

### Coverage

-  AT&T 4G LTE (02/06/13)
-  AT&T 4G (02/01/13)
-  AT&T 3G (02/01/13)
-  AT&T 2G (02/01/13)
-  Roaming 2G (4Q/12)

# Nebraska

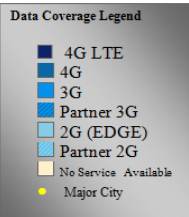
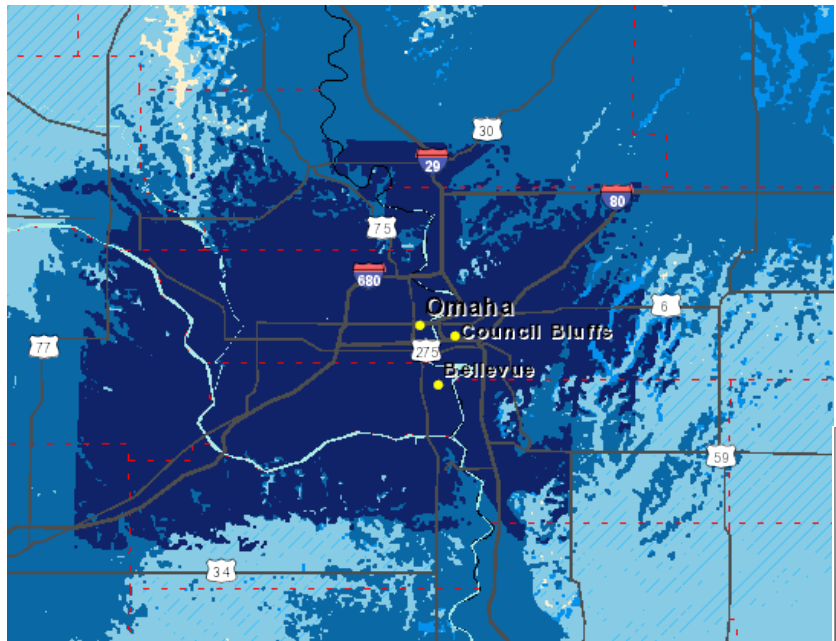


**Legend**

- State Boundary
- County Boundary
- Interstate Highways

**Coverage**

- AT&T 4G LTE (02/06/13)
- AT&T 4G (02/01/13)
- AT&T 3G (02/01/13)
- AT&T 2G (02/01/13)
- Roaming 2G (4Q/12)



Use or disclosure of the data on this page or screen is subject to the restrictions on the title page or opening view screen of this proposal document or file.