

AT&T VOIP
Nortel Business Communication Manager 50 (BCM50)
Release 2.0.2.05e
Configuration Guide
For Use with AT&T
IP Flexible Reach Service

Issue 1.2
04/18/2007



BCM50

TABLE OF CONTENTS

1	Introduction.....	4
1.1	Document Change History.....	4
2	Special Notes	5
3	Overview.....	6
4	Configuration Guide	9
4.1	Nortel BCM Version and Feature Requirements.....	9
4.2	IP Trunks.....	10
4.3	H.323 Gateway Parameters.....	16
4.4	Media Parameters.....	18
4.5	Port Ranges	19
4.6	Configuring Outgoing Calls from BCM to AT&T IP Flex Reach	20
4.7	Configuring Incoming Calls from AT&T IP Flex Reach to BCM	21
5	Troubleshooting	24
5.1	System Monitoring with BCM Monitor	24
5.2	Real-time display of BCM50 Alarms	28
5.3	Log Management	29

TABLE OF FIGURES

Figure 1: AT&T IP Flexible Reach Network	6
Figure 2: BCM50 Software Version Number	9
Figure 3: BCM50 Lists of Applied Patches	10
Figure 4: Available H.323 IP Trunks	11
Figure 5: Assigning Line Pool to IP Trunks	12
Figure 6: Assigning DN to Line Pool	13
Figure 7: Assigning a Route for IP Trunks	14
Figure 8: Assign Code to Access IP Trunk Routes	15
Figure 9: Selecting IP Trunk Module for H.323 Gateway	16
Figure 10: H.323 Gateway Parameters	17
Figure 11: Media Parameters	18
Figure 12: Media Gateway Port Ranges	19
Figure 13: Configuring DID for Outgoing Calls	20
Figure 14: Configuring DID for Incoming Calls	21
Figure 15: Display DID on IP Set LCD	22
Figure 16: Assign Line Pool to IP Sets	23
Figure 17: System Monitoring Example	24
Figure 18: IP Device Listing	25
Figure 19: RTP Session Information	26
Figure 20: Line Monitor Information	26
Figure 21: System Resources	27
Figure 22: BCM50 Alarms Page	28
Figure 23: Log Management	29

1 Introduction

This document provides a configuration guide to assist Nortel Business Communications Manager (BCM) administrators in connecting to AT&T IP Flexible Reach service.

1.1 Document Change History

Issue 1.0	October 12, 2006; first general release
Issue 1.1	March 2, 2007; Modified section 4.2 with additional clarification of BCM IP trunk operation.
Issue 1.2	March 15, 2007; Modified section 2, special note regarding specific unsupported BCM to BCM unattended call transfers.

2 Special Notes

Emergency 911/E911 Services Limitations

While AT&T IP Flexible Reach services support E911/911 calling capabilities in certain circumstances, there are significant limitations on how these capabilities are delivered. Please review the AT&T IP Flexible Reach Service Guide in detail to understand these limitations and restrictions.

Failover to an Alternate AT&T Border Element Not Supported

BCM does not support failover to an alternate AT&T Border Element. BCM must be configured to send to one specific border element.

Specific BCM to BCM Unattended Call Transfer is not supported

If phone1 calls phone2 at the same BCM site and then phone1 performs an unattended transfer to phone3 at another BCM site, that transfer will fail. An unattended transfer is defined as a transfer in which the redirecting party (phone1) hangs up prior to answer by the transferred party (phone3).

Fax Limitations

Fax limitations include the following:

- T.38 fax is not currently supported with the IP Flexible Reach service
- IP Flexible Reach service supports fax using G.711; however, this is not supported by the BCM50 today when configured to use G.729 as the first preferred codec. There is an issue where the BCM does not automatically detect fax/modem tones and switch the call to G.711.
- To work-around this limitation; the BCM supports fax by using analog/POTS lines to the PSTN. BCM-GATM-8 or BCM-GATM-4 media bay modules are required to interface with analog/POTS lines. **NOTE:** four analog lines are included on the base BCM50 chassis.

3 Overview

This section provides a service overview of the Nortel Business Communication Manager 50 (BCM50) IP PBX integration with AT&T IP Flexible Reach service. For an overview of Nortel BCM 200/400 for IP Flexible Reach; please reference a separate document named "Nortel BCM 200/400 Configuration Guide."

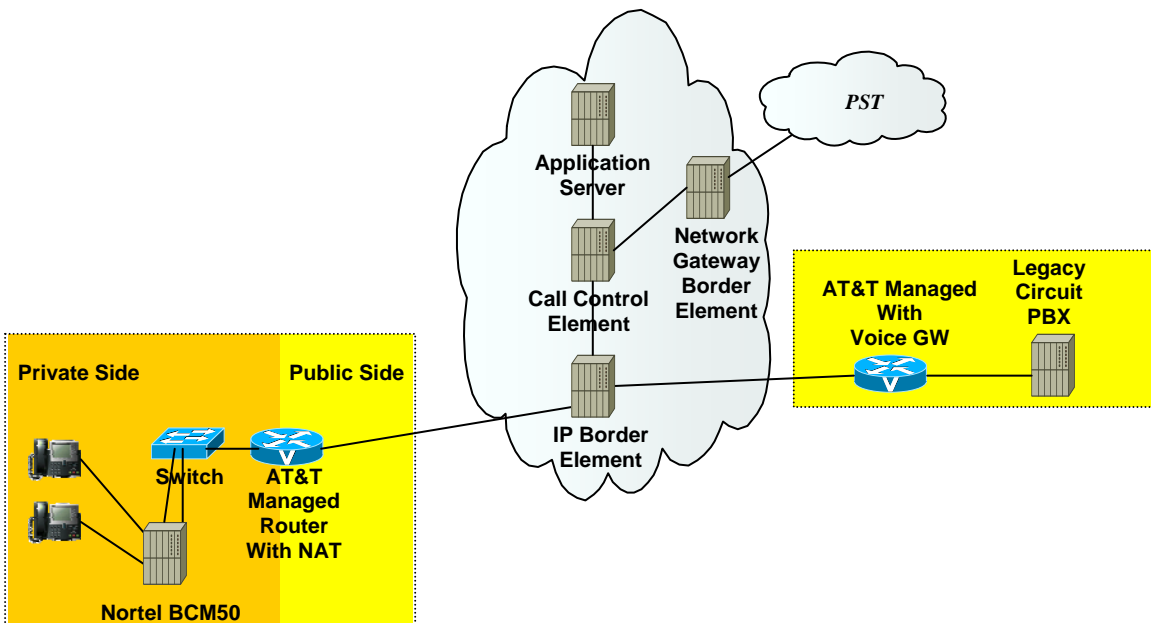


Figure 1: AT&T IP Flexible Reach Network

The Nortel BCM customer premises site shall consist of the following components.

- Nortel IP 200x and 11xx phones – These phones use the Nortel proprietary UNISlim signaling protocol to communicate to the Nortel BCM50 IP PBX for call feature and routing support. These phones can be connected to a Nortel Ethernet switch (ES 470, ERS 5520, etc.) that supplies in-line power (IEEE 802.3af) to the phones.
- Nortel IP 2050 Software Phone – The IP 2050 is a soft phone client application that uses the Nortel proprietary UNISlim signaling protocol. The following are system requirements for the IP 2050 software phone:
 - Pentium-compatible CPU (200MHz or higher)

- 128 MB of memory (Windows 2000, XP)
 - 64 MB of memory (Windows 98)
 - 55 MB of free hard drive space (all languages)
 - Monitor settings: 16-bit high color; 800x600 resolution or higher
 - USB port
 - Nortel USB audio kit
 - Supported OS; Windows 2000 Professional, Windows 2000 Professional Service pack 1 & 2, Windows 98, Windows XP Professional and Windows XP Home
- The following interfaces are provided on all three variants of the BCM50 main module:
 - 12 digital station ports supporting digital phones.
 - 4 Analog Loop Supervised Trunks (NA networking standards).
 - 4 Analog Station interfaces with message waiting and CLID support.
 - 3 port 10/100 Ethernet switch with auto sensing and auto polarity.
 - 1 10/100 Ethernet port reserved for direct access management of the system
 - Integrated CallPilot voice mail system

The following routing scenarios are supported by the Nortel BCM IP PBX and **DO NOT** use the AT&T Call Control.

- Local Nortel BCM phone to other local Nortel BCM phone
- Local fax machine to other fax machine via PSTN

The following routing scenarios are supported by the Nortel BCM IP PBX and **DO** use the AT&T Call Control. For voice calls, the G.729 codec shall be used.

- Nortel BCM phones to PSTN (domestic US and international).
- Nortel BCM phones to legacy PBX site with Cisco gateway.
- Legacy PBX site with Cisco gateway to Nortel BCM phones.
- Nortel BCM phones at one Nortel BCM IP PBX site to Nortel BCM phones at another Nortel BCM IP PBX site.

If the customer has subscribed to Calling Plans B and C (Local), then the following routing scenarios are supported by the BCM IP PBX and **DO** use the AT&T Call Control. For voice calls, the G.729 or G.711 codec may be used. BCM selects G.729 as the highest priority codec.

- Inbound PSTN to BCM phone
- Outbound local PSTN calls from the BCM phones.
- Outbound local N11 (i.e. 411, 911) calls from the BCM phones

4 Configuration Guide

This configuration guide specifies the Nortel BCM50 screens that must be configured and updated to support the AT&T IP Flexible Reach service.

4.1 Nortel BCM Version and Feature Requirements

The Nortel BCM must be running release 2.0.2.05e. You can check the version of BCM by viewing the following screen.

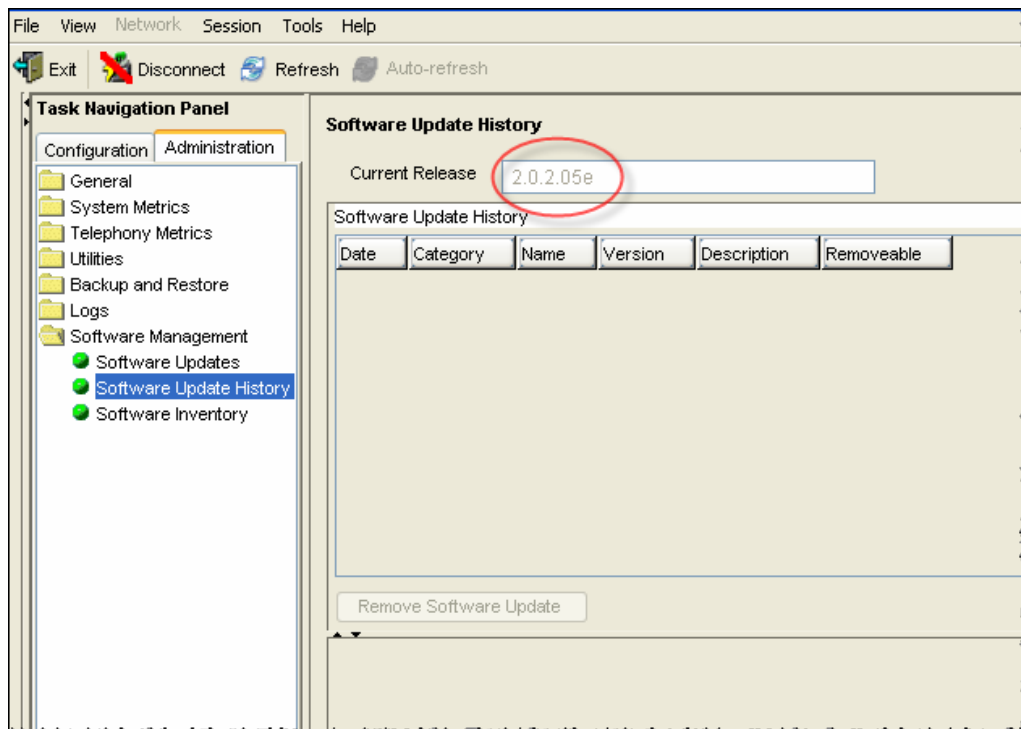


Figure 2: BCM50 Software Version Number

Ensure that the current release field specifies **2.0.2.05e**. This is the supported release that is required for AT&T IP Flexible Reach service.

Currently, there are no BCM50 (Rel.2.0.2.05e) patches that are required for AT&T IP Flex Reach service. However, the following is the procedure to verify any installed patches on the system: under the BCM Unified Manager's "Administration" tab, click on "Software Management" and select "Software Update History."

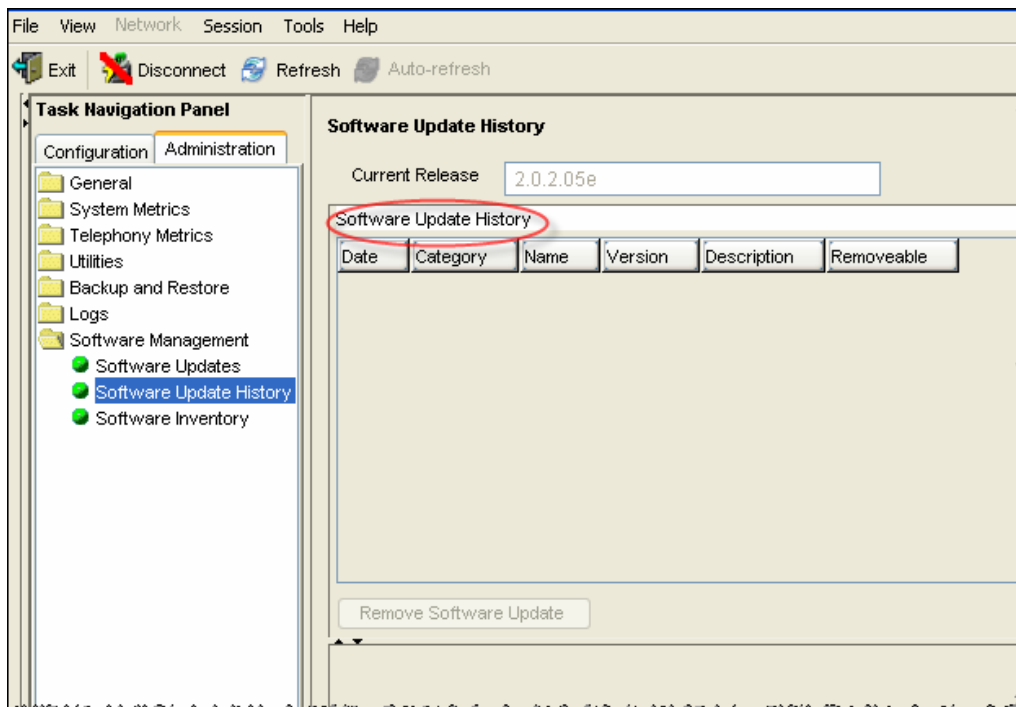


Figure 3: BCM50 Lists of Applied Patches

4.2 IP Trunks

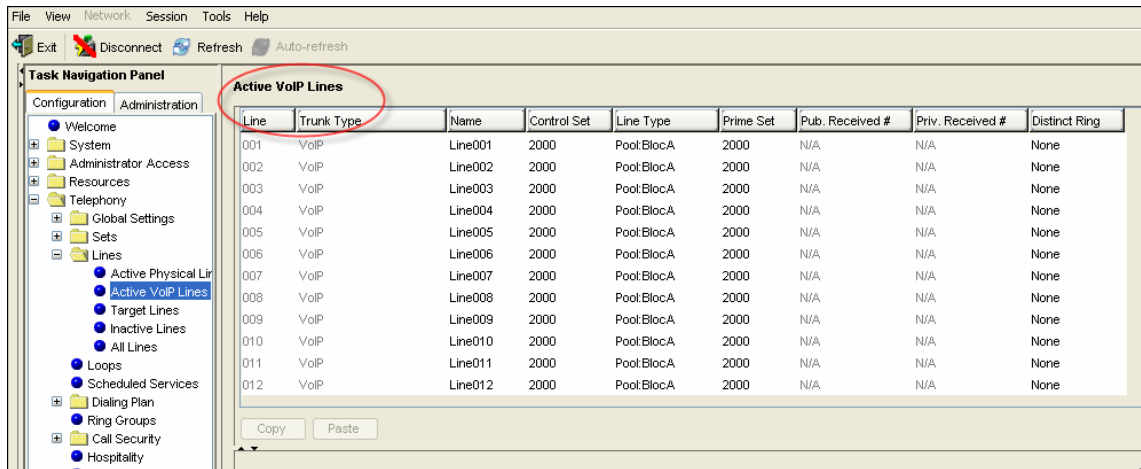
Voice over IP (VoIP) trunks, are signaling channels that simulate how CO lines work. However, VoIP trunks transmit data to the IP network over a LAN or IP network rather than over physical lines. Once the VoIP trunks are set up, you can assign them to line pools, and program their behavior in the same way you would PRI lines.

VoIP trunks use line numbers 001 to 012. These line records appear under Configuration -->Telephony -->Lines -->Active VoIP Lines. To access VoIP lines, you need to enter software keycodes. Each keycode supports a specific number of trunks. No entries appear in the Enabled VoIP lines field until you complete the IP Trunks Settings field, which displays when you click IP Trunks under Configuration -->Resources -->Telephony Resources -->IP trunks.

VoIP trunks should be configured to use a single line pool per VoIP trunk type. Do not mix other trunk types on the same line pool. The VoIP line pools are assigned to routes, which, in turn, are configured with destination codes that route calls to the AT&T IP Flex Reach network.

You can also create a fallback for the trunk. This is a situation where the system reroutes the call to a PSTN line pool if the primary route is not available or the call quality is not suitable. If you do not configure your network for fallback and the call quality is below threshold, the IP call fails.

Check under **Configuration -> Telephony -> Active VOIP Lines** to see if Trunks have been allocated. You should have a number of H.323 trunks displayed. The total number of lines indicated corresponds to the number of IP trunks licensed by Nortel for your BCM. See figure 4 below.



Line	Trunk Type	Name	Control Set	Line Type	Prime Set	Pub. Received #	Priv. Received #	Distinct Ring
001	VoIP	Line001	2000	Pool:BlocA	2000	N/A	N/A	None
002	VoIP	Line002	2000	Pool:BlocA	2000	N/A	N/A	None
003	VoIP	Line003	2000	Pool:BlocA	2000	N/A	N/A	None
004	VoIP	Line004	2000	Pool:BlocA	2000	N/A	N/A	None
005	VoIP	Line005	2000	Pool:BlocA	2000	N/A	N/A	None
006	VoIP	Line006	2000	Pool:BlocA	2000	N/A	N/A	None
007	VoIP	Line007	2000	Pool:BlocA	2000	N/A	N/A	None
008	VoIP	Line008	2000	Pool:BlocA	2000	N/A	N/A	None
009	VoIP	Line009	2000	Pool:BlocA	2000	N/A	N/A	None
010	VoIP	Line010	2000	Pool:BlocA	2000	N/A	N/A	None
011	VoIP	Line011	2000	Pool:BlocA	2000	N/A	N/A	None
012	VoIP	Line012	2000	Pool:BlocA	2000	N/A	N/A	None

Figure 4: Available H.323 IP Trunks

Under **Configuration** -> **Telephony** -> **Dialing Plan**, select "**Line Pools.**" In this example, "**BlocA**" under the "**Pool**" tab was selected. Line pool will be used to access the VOIP trunks. Additionally, all DN numbers that need to access the VOIP trunks must be added to this pool. Please see the following screen shots for an example configuration.

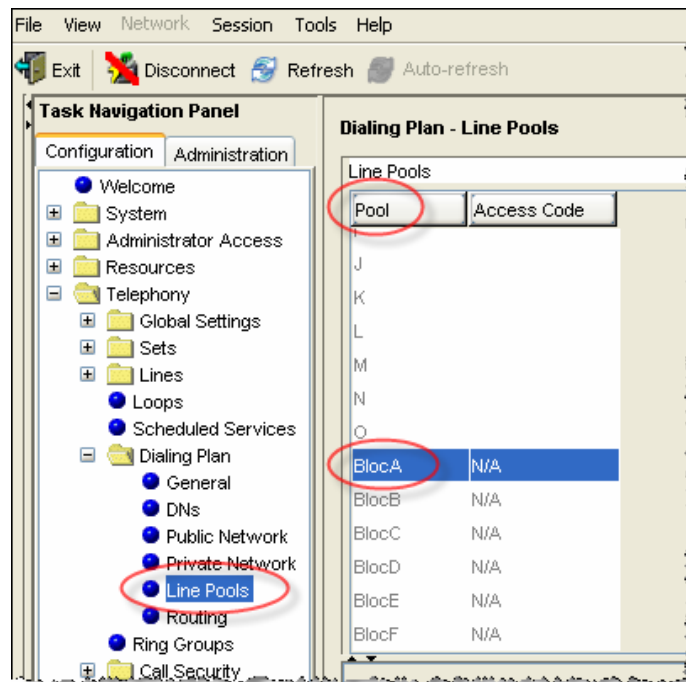


Figure 5: Assigning Line Pool to IP Trunks

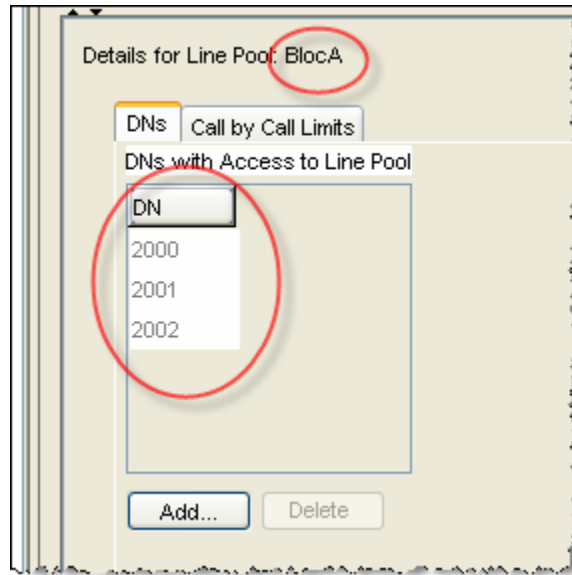


Figure 6: Assigning DN to Line Pool

Under **Configuration** → **Telephony** → **Dialing Plan** → **Routing**: Select the “**routes**” tab and ensure there is an entry for “**BlocA**.” In this case “**001**” is the route number and the DN type is specified as “**National**.” See figure 7 below.

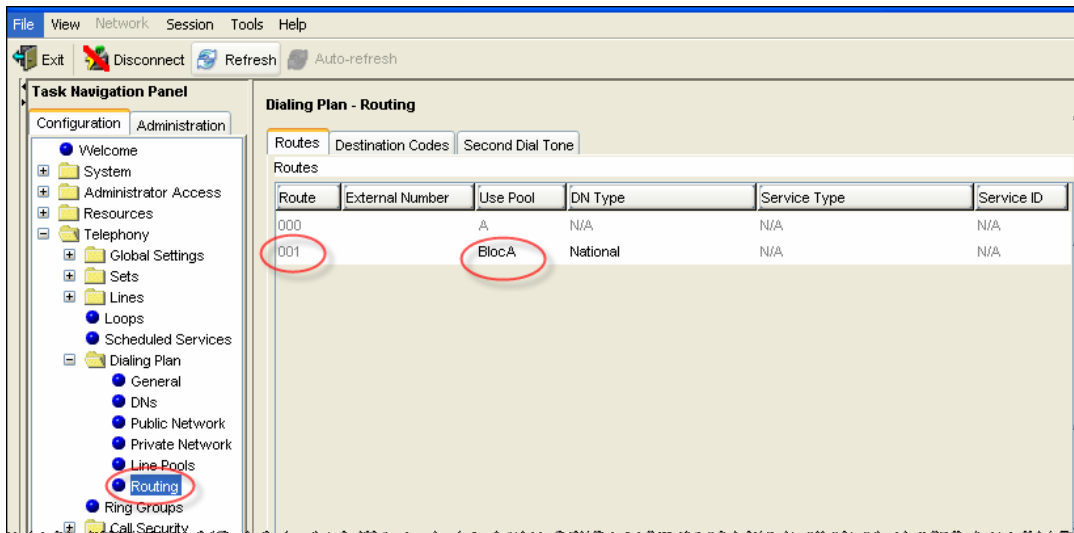


Figure 7: Assigning a Route for IP Trunks

Under **Configuration** → **Telephony** → **Dialing Plan** → **Routing**: This time select the “**Destination**” tab to assign an access code for the IP trunks. Configure a destination code “**9**” or to whatever code you want to access for outside (IP off-net) call that will be presented to the AT&T service for routing. In this case, when “**9**” is dialed the dialed string will point to the IP trunk for routing. See figure 8 below.

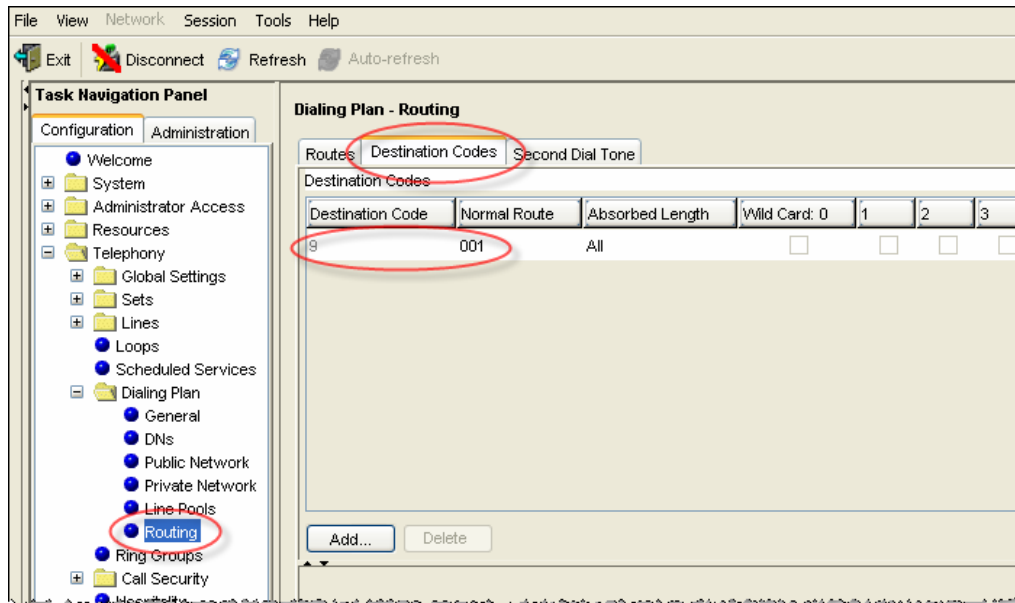


Figure 8: Assign Code to Access IP Trunk Routes

4.3 H.323 Gateway Parameters

Configuration → Resources → Telephony Resources:

Select module type “IP Trunks” (figure 9) and click on the “Local Gateway” tab (Figure 10):

- On this screen **Call Signaling** should be populated as “**Gatekeeper Routed no RAS**”
- **Alias Name:** The AT&T IP Flexible Reach service does not require a H.323 ID name. However, the BCM was tested with a H.323 ID name and Nortel recommends that the customer provides a name in this field.
- **H.245 tunneling** must be enabled.
- For the **Call Signaling Port** use **1720** as a value.
- Make sure the **Primary Gatekeeper IP** is populated with the correct AT&T IPBE IP address. Sample IP addresses are shown next.
 - Primary Gatekeeper - **(please contact your Customer Care Representative for the AT&T IP border element IP address)**
 - Backup Gatekeeper – 0.0.0.0*

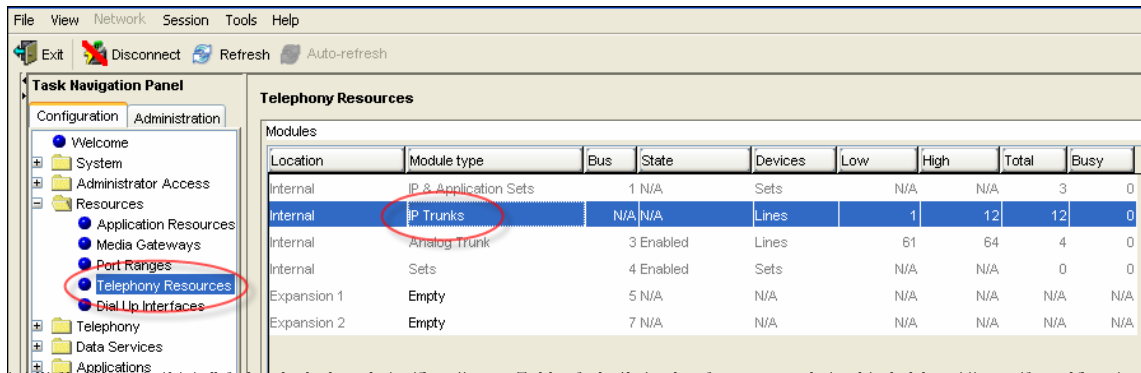


Figure 9: Selecting IP Trunk Module for H.323 Gateway

AT&T IP Flexible Reach Service
Nortel BCM50 (Release 2.0.2.05e) Configuration Guide

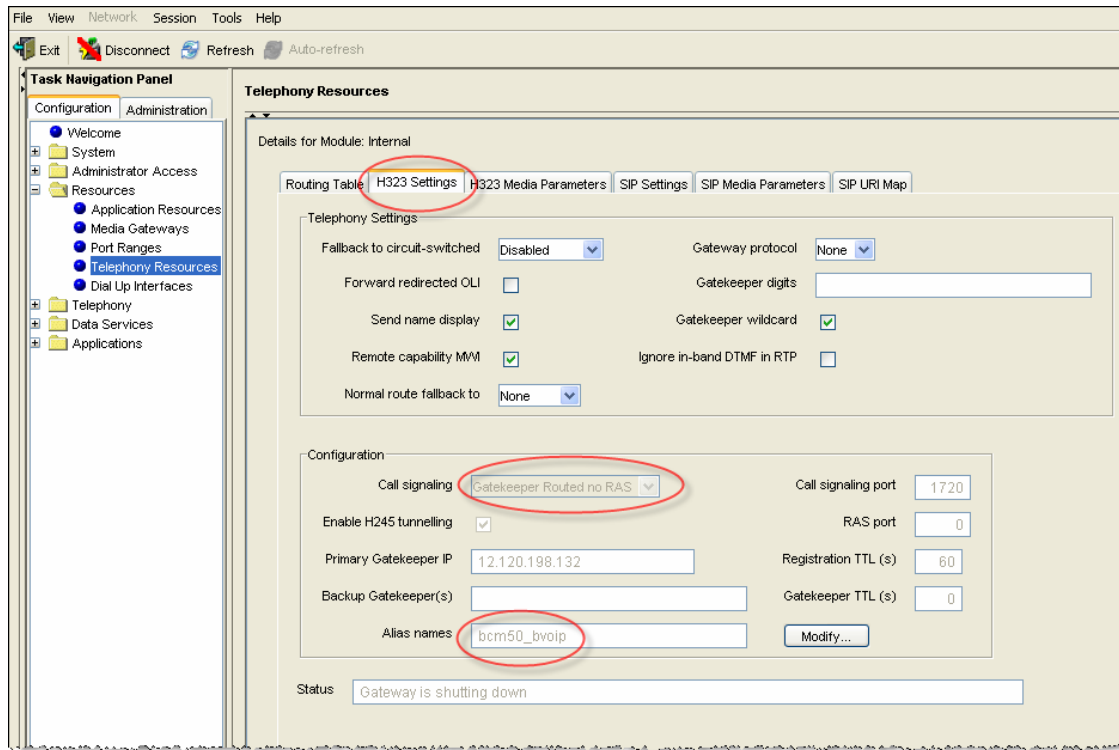


Figure 10: H.323 Gateway Parameters

*Note: the backup gatekeeper will not be supported on the current BCM50 release. The Nortel implementation is not compatible with the IP Flexible Reach service today. Nortel will provide support in a future release. In case of failure to the primary gatekeeper; the BCM will not be able to place any outgoing calls to the AT&T IP Flexible Reach service. The backup gatekeeper IP address (Please contact your Customer Care representative) must be manually configured in the "Primary Gatekeeper IP" field to restore outgoing calls. Additionally, the AT&T IP Flexible Reach service will send incoming calls to the BCM from multiple IP border elements. The BCM will accept calls from any border elements without additional configuration.

4.4 Media Parameters

Configuration → *Resources* → *Telephony Resources*:

Select module type “IP Trunks” and click on the “Media Parameters” tab:
Within this screen; ensure that all values are exactly as the sample screen shot shown below:

- **1st Preferred Codec:** G.729
- **Silence Compression:** Disabled
- **Jitter Buffer – Voice:** Auto
- **T.38 Fax Support:** Disabled
- **G.729 Payload Size:** 20

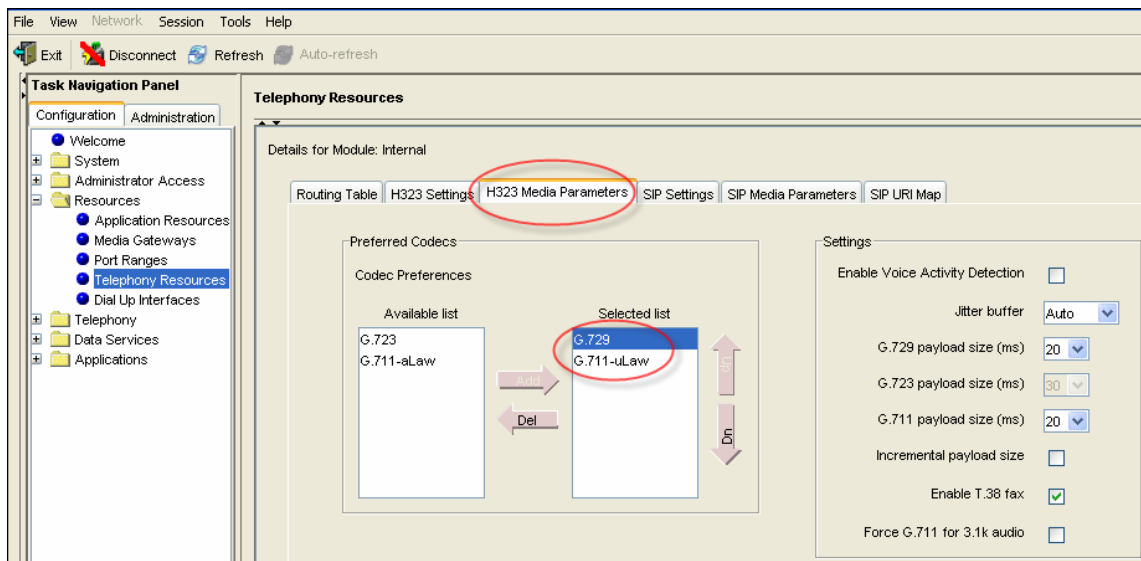


Figure 11: Media Parameters

4.5 Port Ranges

Configuration → ***Resources*** → ***Telephony Resources***:

Select “**Port Ranges**” and use the values shown below. The default RTP ranges are from 28000 to 28255. This range is used for fax (T.38), digital phones and analog phones. The media gateway port ranges are configurable.

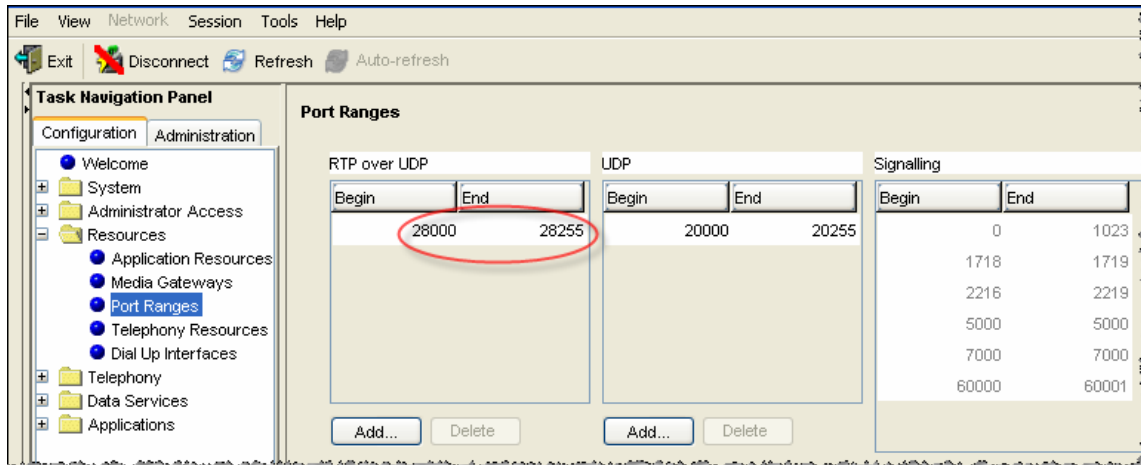


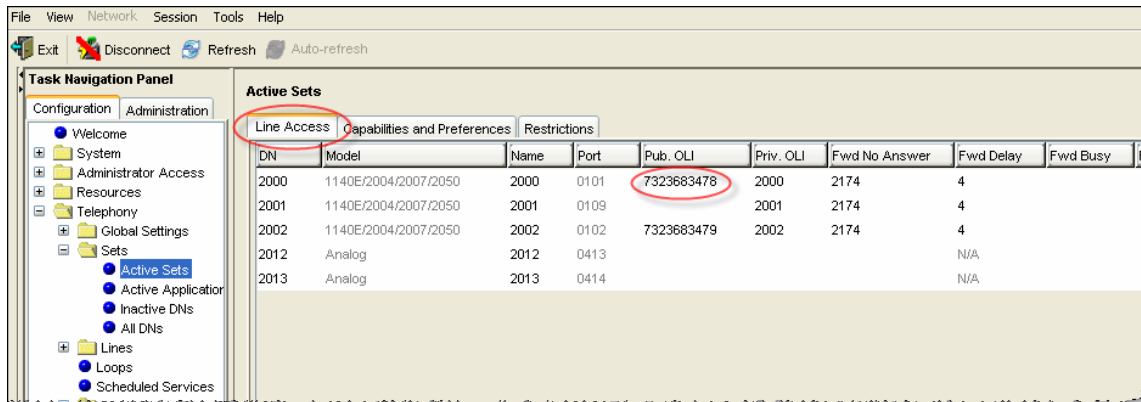
Figure 12: Media Gateway Port Ranges

The BCM IP phone's RTP and RTCP port range are 51000-51399. Each IP phone call uses two ports. The default port range for RTP and RTCP are not configurable.

4.6 Configuring Outgoing Calls from BCM to AT&T IP Flex Reach

Configuration → Telephony → Sets → Active Sets

The next step is to associate the private DN number with the DID number. In the example below; 2000 is entered in the “**Private OLI**” field and 7323683478 is entered in the “**Public OLI**” field. This example enables “calling number translation” (outgoing) for this particular DN number. See figure 13 below.



DN	Model	Name	Port	Pub. OLI	Priv. OLI	Fwd No Answer	Fwd Delay	Fwd Busy
2000	1140E/2004/2007/2050	2000	0101	7323683478	2000	2174	4	
2001	1140E/2004/2007/2050	2001	0109		2001	2174	4	
2002	1140E/2004/2007/2050	2002	0102	7323683479	2002	2174	4	
2012	Analog	2012	0413				N/A	
2013	Analog	2013	0414				N/A	

Figure 13: Configuring DID for Outgoing Calls

4.7 Configuring Incoming Calls from AT&T IP Flex Reach to BCM

Configuration → *Telephony* → *Sets* → *Active Sets*

This step illustrates how to configure the “called number translation” (incoming) for the DN number. In our example, go to the “**Line Assignment**” tab located at the bottom of the “**Line Access**” page. Enter 2000 in the “Private” received number field; then enter the 10 digit DID (Public number) in the “public” received number (Note: 10 digit entries are now supported with Release 2.0). Incoming DID calls will be routed to telephones, based on the full 10 digits received by the network. For example, Incoming calls from the AT&T IP Flexible Reach network will deliver a ten digit DID number, e.g. 7323683478. The BCM will route the call using all ten digits, e.g. 7323683478. See figure 14 below.

Active Sets

Line Access | Capabilities and Preferences | Restrictions

DN	Model	Name	Port	Pub. OLI	Priv. OLI	Fwd No Answer	Fwd Delay	Fwd B...
2000	1140E/2004/2007/2050	2000	0101	7323683478	2000	2174	4	
2001	1140E/2004/2007/2050	2001	0109		2001	2174	4	
2002	1140E/2004/2007/2050	2002	0102	7323683479	2002	2174	4	
2012	Analog	2012	0413				N/A	
2013	Analog	2013	0414				N/A	

Copy Paste

Details for DN: 2000

Line Assignment | Line Pool Access | Answer DNs

Assigned Lines

Line	Appearance Type	Appearances	Caller ID Set	Vmsg Set	Priv. Received #	Pub. Received #
141	Appr&Ring	1	✓	✓	2000	7323683478

Figure 14: Configuring DID for Incoming Calls

Configuration → Telephony → Lines → Target Lines

To display the DID number on the IP phone LCD screen; under the "Target Lines" tab click on the assigned "Line" number of the DN you want to program. In our example below, "Line 141" is selected; enter 3683478 in the "Name" field and then enter "DN 2000" for the "Control DN" field. See figure 15 below.

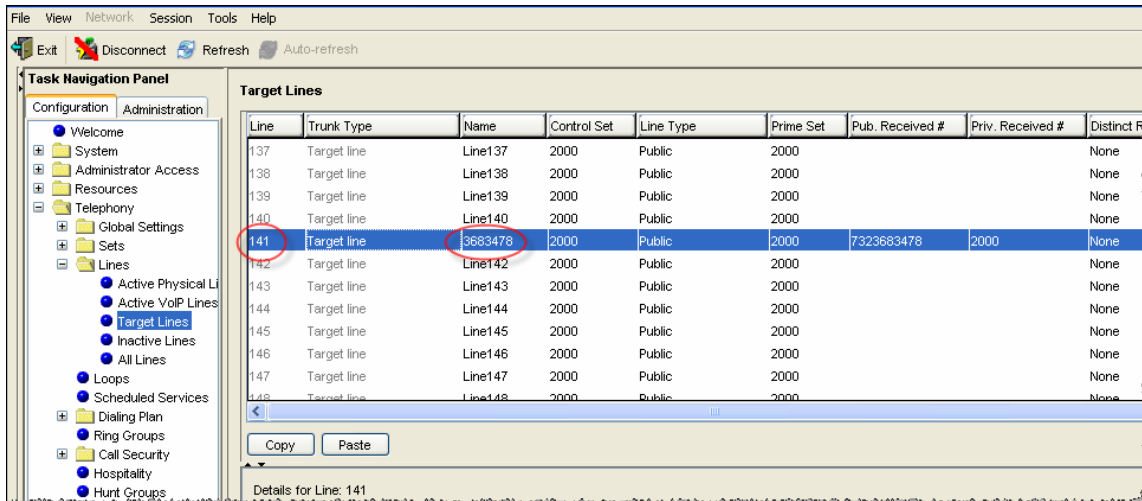


Figure 15: Display DID on IP Set LCD

Additionally, all telephone sets that need to access the VOIP trunks needs to be configured with the designated **“Line Pool” code**. In the example below **“BlocA”** is defined as the code to access the VOIP trunks. See figure 16 below.

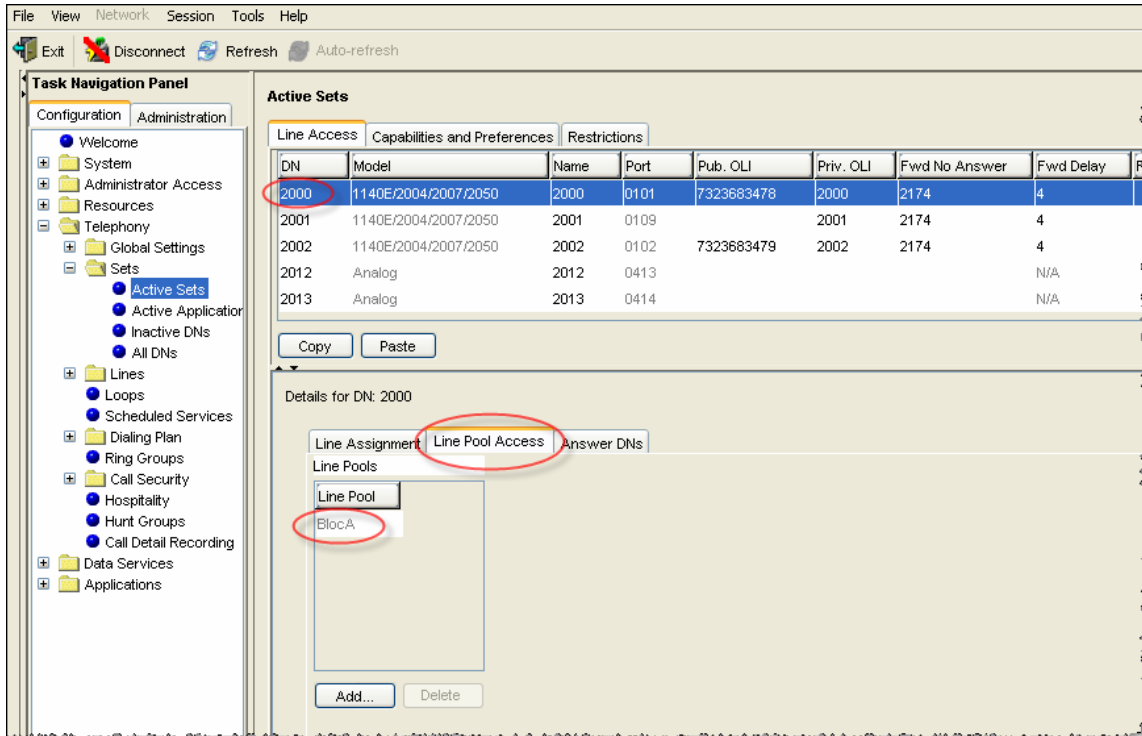


Figure 16: Assign Line Pool to IP Sets

5 Troubleshooting

This section provides some tips about troubleshooting problems.

5.1 System Monitoring with BCM Monitor

A valuable application for performance monitoring is the BCM Monitor. It allows the BCM administrator to see the current status of various parts of the BCM system. Statistical information is provided on system throughput and other performance-related information, including system CPU usage (graph or table format) and memory usage (graph or table format).

If a performance display is active, it is automatically updated with real-time performance information in user-selectable time increments.

The focus of the real-time monitoring capabilities is:

- Overall system status
- Utilization of resources on the Media Card (CSC) (e.g. signaling channel usage)
- Operation of telephony applications (e.g., Messaging, Call Center, etc.).
- IP telephony activity
- D-channel monitoring for PRI, BRI and VoIP trunks

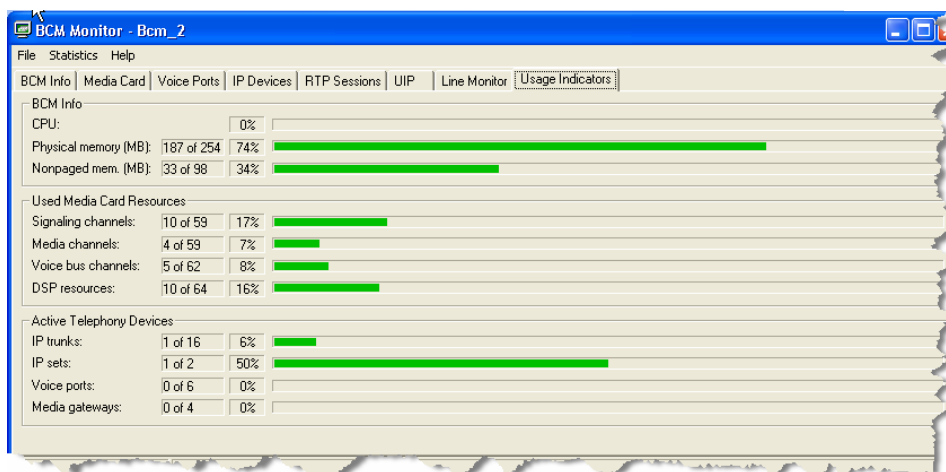


Figure 17: System Monitoring Example

The BCM Monitor application can be downloaded to an administrator's PC from the BCM and pointed at a specific BCM's IP address for monitoring. Multiple instances of the BCM Monitor application can be used on a single PC to monitor several remote BCM systems at the same time. Backward version compatibility is supported.

All of the registered IP devices can be viewed with the BCM Monitor. The screen shot below depicts IP Phone type, DN number and IP address of each registered IP phone. Additionally, if the device is active on a call the RTP session information is also displayed.

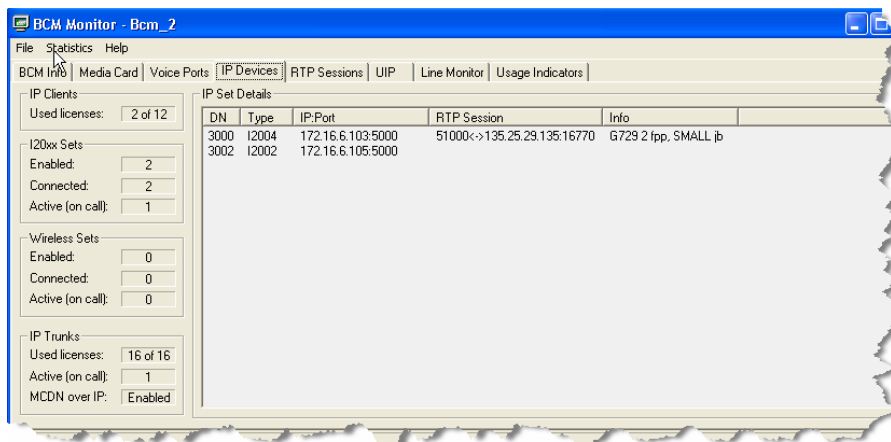


Figure 18: IP Device Listing

The end-to-end RTP sessions per IP call can also be displayed with the BCM Manager. The example below depicts an end-to-end call.

AT&T IP Flexible Reach Service
Nortel BCM50 (Release 2.0.2.05e) Configuration Guide

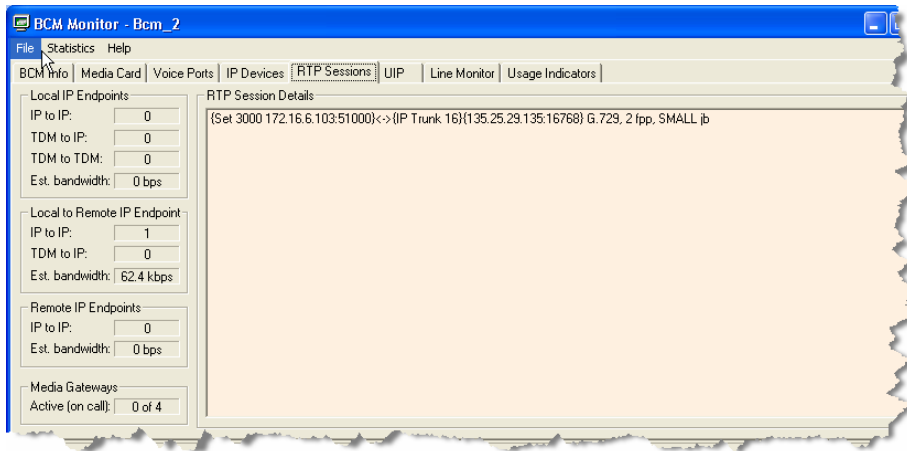


Figure 19: RTP Session Information

The BCM Monitor can be used to monitor incoming and outgoing trunks to determine if trunks are being busy or if they are idle. The example below depicts utilized lines used by local and remote telephone/DN numbers.

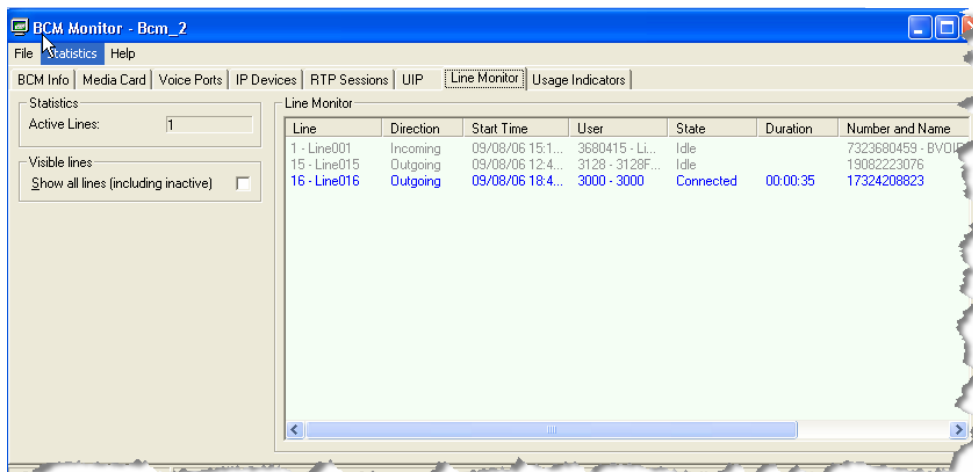


Figure 20: Line Monitor Information

The BCM Monitor can also be used to monitor all types of system usages. The following are some parameters that can be monitored:

- CPU utilization
- Physical memory
- Media card DSP utilization
- IP sets and IP Trunks
- Voice ports and media gateway usage

AT&T IP Flexible Reach Service
Nortel BCM50 (Release 2.0.2.05e) Configuration Guide

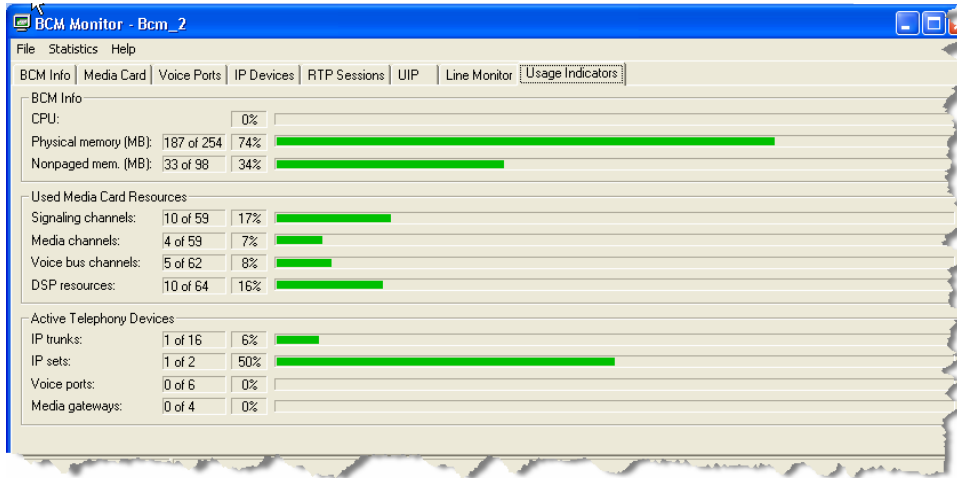
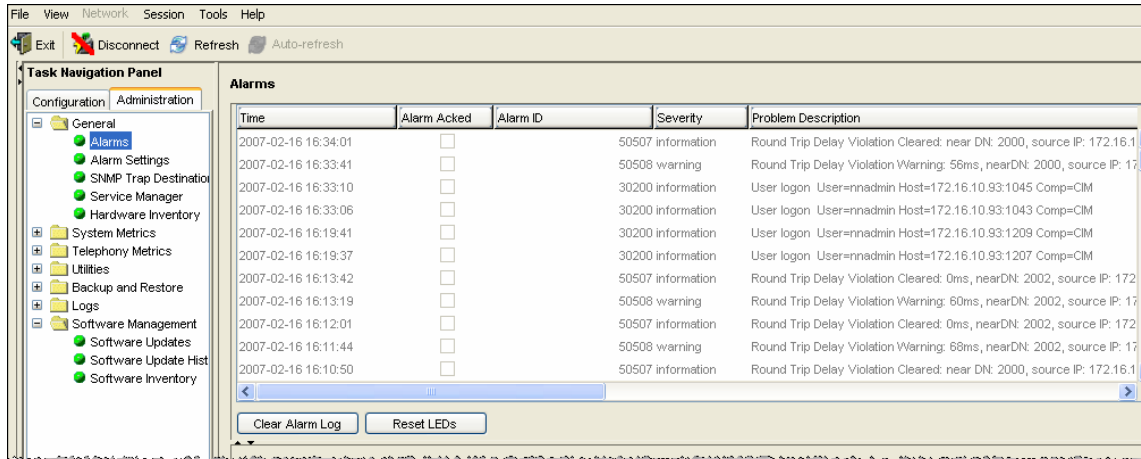


Figure 21: System Resources

5.2 Real-time display of BCM50 Alarms

Administration → *General* → *Alarms*

The BCM50 provides extensive alarm logs along with severity and problem descriptions. The following is an example screen shot of the “Alarms” display:



The screenshot shows the BCM50 Alarms page. On the left is a Task Navigation Panel with a tree view containing folders like General, System Metrics, Utilities, Backup and Restore, Logs, and Software Management. The 'Alarms' folder is selected. The main area displays a table of alarm events. At the bottom of the table are 'Clear Alarm Log' and 'Reset LEDs' buttons.

Time	Alarm Acked	Alarm ID	Severity	Problem Description
2007-02-16 16:34:01	<input type="checkbox"/>		50507 information	Round Trip Delay Violation Cleared: near DN: 2000, source IP: 172.16.1
2007-02-16 16:33:41	<input type="checkbox"/>		50508 warning	Round Trip Delay Violation Warning: 56ms, nearDN: 2000, source IP: 17
2007-02-16 16:33:10	<input type="checkbox"/>		30200 information	User logon User=nnadmin Host=172.16.10.93:1045 Comp=CIM
2007-02-16 16:33:06	<input type="checkbox"/>		30200 information	User logon User=nnadmin Host=172.16.10.93:1043 Comp=CIM
2007-02-16 16:19:41	<input type="checkbox"/>		30200 information	User logon User=nnadmin Host=172.16.10.93:1209 Comp=CIM
2007-02-16 16:19:37	<input type="checkbox"/>		30200 information	User logon User=nnadmin Host=172.16.10.93:1207 Comp=CIM
2007-02-16 16:13:42	<input type="checkbox"/>		50507 information	Round Trip Delay Violation Cleared: 0ms, nearDN: 2002, source IP: 172
2007-02-16 16:13:19	<input type="checkbox"/>		50508 warning	Round Trip Delay Violation Warning: 60ms, nearDN: 2002, source IP: 17
2007-02-16 16:12:01	<input type="checkbox"/>		50507 information	Round Trip Delay Violation Cleared: 0ms, nearDN: 2002, source IP: 172
2007-02-16 16:11:44	<input type="checkbox"/>		50508 warning	Round Trip Delay Violation Warning: 68ms, nearDN: 2002, source IP: 17
2007-02-16 16:10:50	<input type="checkbox"/>		50507 information	Round Trip Delay Violation Cleared: near DN: 2000, source IP: 172.16.1

Figure 22: BCM50 Alarms Page

5.3 Log Management

Another extremely useful tool is the “Log Management.” This allows you to quickly and easily collect all relevant logs files and other information to help the various support teams debug any problems you may have with your BCM50. The entire log files required to diagnose a problem is consolidated into a single file.

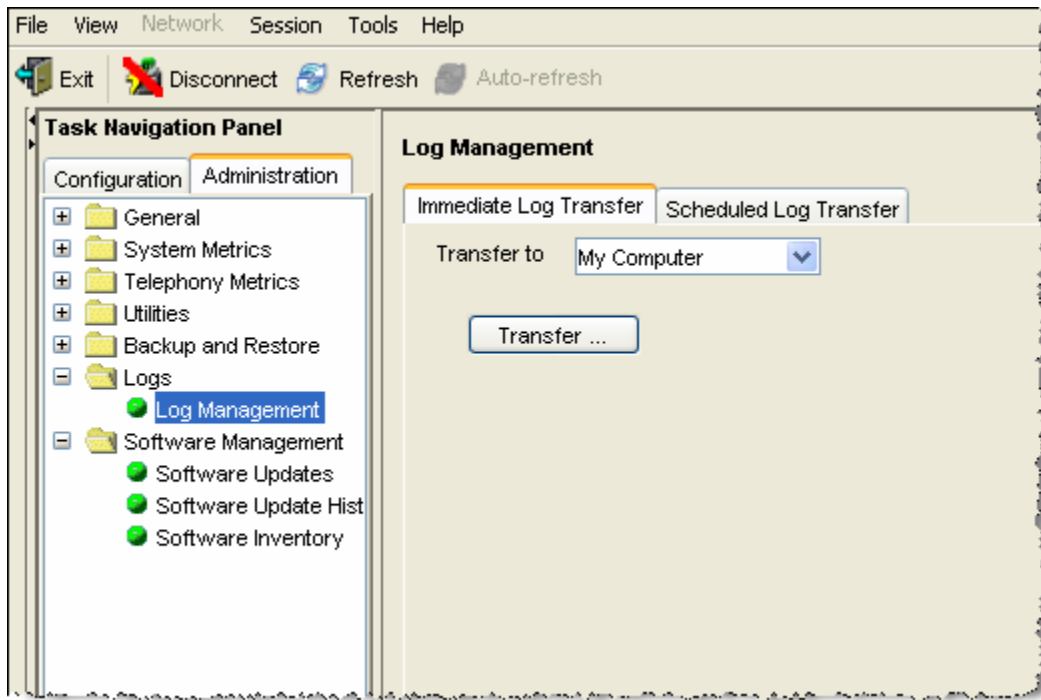


Figure 23: Log Management

When you first suspect a problem with your BCM, it is important that you go into the “Log Management” screen and download the log file to your PC. Even if you end up resolving the issue, it is good to know that this information has been captured if it does end up being required.

This Customer Configuration Guide ("CCG") is offered as a convenience to AT&T's customers. The specifications and information regarding the product in this CCG are subject to change without notice. All statements, information, and recommendations in this CCG are believed to be accurate but are presented without warranty of any kind, express or implied, and are provided "AS IS". Users must take full responsibility for the application of the specifications and information in this CCG.

In no event shall AT&T or its suppliers be liable for any indirect, special, consequential, or incidental damages, including, without limitation, lost profits or loss or damage arising out of the use or inability to use this CCG, even if AT&T or its suppliers have been advised of the possibility of such damage.

- End of Document -