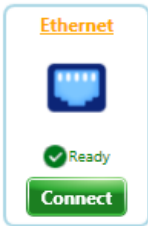




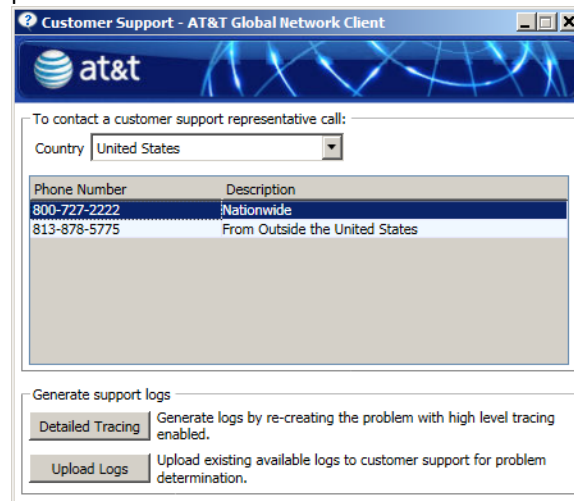
The AT&T Global Network Client provides four main pre-configured Automatic Connection methods:

	Connection Methods
Ethernet or Existing Connection	
Wi-Fi	
Mobile (Cellular)	

Useful Features

Help

In the **Help** panel on the **Main Window**, click **Contact customer support** to open the **Customer Support** window containing your AT&T help desk phone numbers.



Change Password

Click **Change...** on the Network Login window to open a window to change your network password.

Connection Information

Click **VPN Status icon** from the **Status bar** of the **Main Window** to see your connection information including account information and IP address.

Main Window Icons

Click on the **Firewall\Malware** icons in the **Status bar** of the Main Window to see additional information about each icon.

* Icons will only display when user has LPE rules

Software Updates

The client will automatically download software updates on a regular interval.

AT&T Global Network Client Quick-Start Reference Card



Your Login Credentials

Network Account ID: _____

Network User ID: _____

This card provides instructions for using the basic features of the AT&T Global Network (AGN) Client with the AT&T Business Internet Service.

Key Client Features

- Single click access
- Intelligent detection and connection over the best wireless or wired access method available (Note: Authorization is required for access to AT&T partner Wi-Fi and Wired Ethernet.)
- At-a-glance indicators for endpoint security and software update status
 - * Icons will only display when user has LPE rules
- Available for Microsoft Windows® 10, Windows® 8 and Windows® 7

Automatic Connection



If the AT&T Global Network Client is not already running, double-click on the **AT&T Global Network Client** icon on your desktop to launch the client.

The AT&T Global Network Client includes an Automatic Connection feature which by default will attempt a connection over all possible network types installed on your computer. You will be prompted for information required to connect. Click **Connect**.

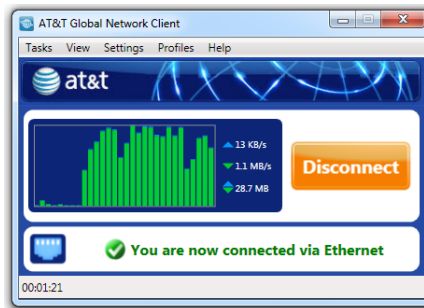


The client will attempt networks in this order: Broadband, Wi-Fi, Cellular.

You will be prompted for your network login credentials. Enter them in the Network Login window.



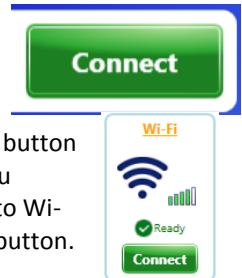
You are now connected! Click **Disconnect** to end your session.



The Automatic Connection Sequence

The connection sequence includes all network types. Clicking the Big Green connect button will try the fastest connection type first.

However, for situations when you want control the network type to connect with, simply click the Connect button below the connection type you desire to use, e.g. to connect to Wi-Fi, click on the Wi-Fi Connect button.



To change the active connection sequence click **Change the connection sequence...** at the bottom of the **Connection Sequence** panel of the **Main Window**. To activate a defined **Connection Sequence**, select a sequence from the list.

