

## First Connection

If the AGN Client is not already running, double-click on the AT&T Global Network Client icon on your desktop to launch the client. Click the green Connect button.

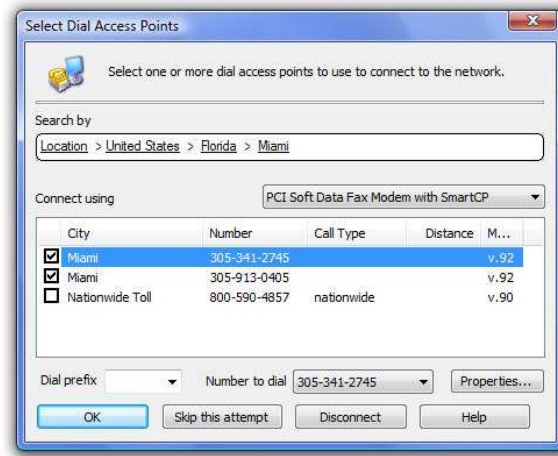


The AT&T Global Network Client includes an Automatic Connection feature which by default will attempt a connection over the highest speed access type available from your current location. You will be prompted for information required to connect.



The application will attempt networks in this order: Broadband, Wi-Fi, Cellular, Dial/ISDN.

If Dial/ISDN is your only available network, you will be prompted to select your **Dial Access Point**. Click the links under **Search by** to sort the list and narrow your choices by location, country, state and city. Select an access point by clicking the checkbox next to the city name. Select a modem using the **Connect using** drop down box. Verify the information for **Dial Prefix** and **Number to dial**. Click **OK** to continue.



You will be prompted for your network login credentials. Enter them in the **Network Login** window.



You are now connected! Click **Disconnect** to end your session.



## AT&T Global Network Client Installation Reference Card



Your Network Login Credentials

Network Account ID: \_\_\_\_\_

Network User ID: \_\_\_\_\_

This card provides instructions for installing the AT&T Global Network (AGN) Client for connection to the AT&T Business Internet Service.

### Key Client Features

- Single click access
- Intelligent detection and connection over the best wireless or wired access method available (Note: Authorization is required for access to AT&T Preferred Wi-Fi and Wired Ethernet.)
- Available for Microsoft Windows® 8 and Windows® 7

## Installation

Begin the installation by double-clicking on the executable file, agnc\_int.exe, on your installation media (USB fob, CD, software download, etc.).

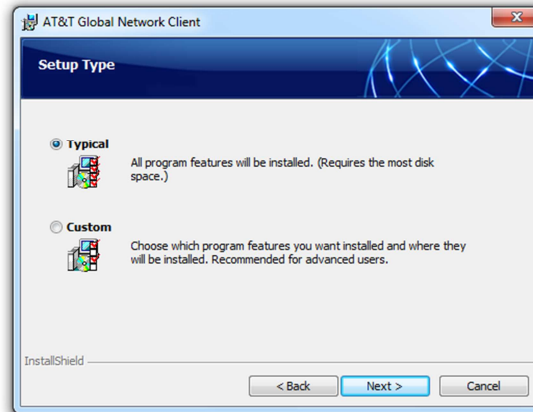
1 Click **Next>** on the first window to continue with installation.



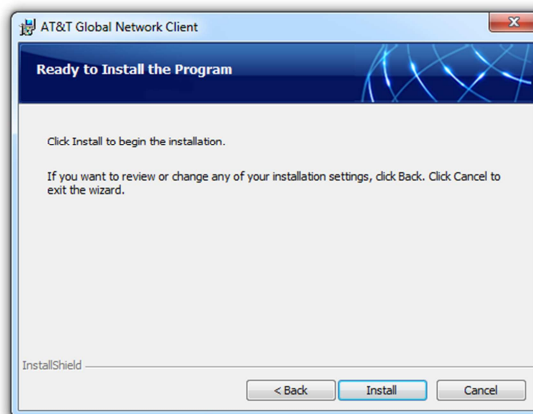
2 Click the checkbox next to **I accept the terms in the license agreement** and click **Next>** to continue.



3 The Internet Edition is configured for optimal performance for Internet users; it is recommended you use the Typical installation. Using Typical, the AT&T Firewall is disabled. Click Next> to continue.



4 Click **Install** to continue.



It may take several minutes to install, a progress window will show the installation

status. Please be patient.

5 Click the checkbox next to **Launch AT&T Global Network Client Internet Edition** and click **Finish** to complete installation and run the AT&T Client.

